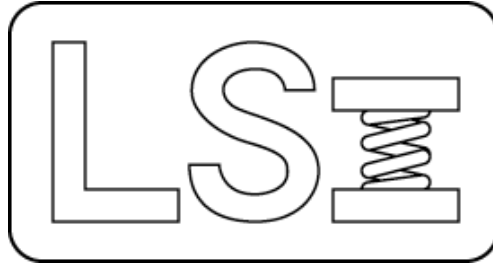


# *Larson Systems Inc.*

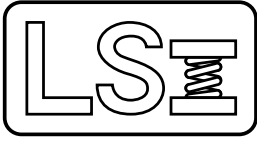


## *CST Parts List*

*050-0000-0118-00*

*Coil Spring Tester – 750 lb*





**050-0000-0118-00 B**

# Parts List

Coil Spring Tester 750 lb

Rev	By	Date	Description
	SMH	11-06-2002	
A	MDL	02-18-2004	Added sticker assembly 025-6000-0023-00.
B	DAL	09-07-2007	060-1000-0025-00 was 060-1000-0050-00

Item	Qty	Part Number	Rev	Part Name	PCB Location	Part Length
1	1	025-0000-0529-00	B	Coil Spring Tester Assembly, 750 lb		in.
2	1	025-1000-0396-00		Power Supply, 100-240 VAC 50-60 Hz (USA Plug)		in.
2		025-1000-0396-01		Power Supply, 100-240 VAC 50-60 Hz (UK Plug)		in.
2		025-1000-0396-02		Power Supply, 100-240 VAC 50-60 Hz (Australia, New Zealand,		in.
2		025-1000-0396-03		Power Supply, 100-240 VAC 50-60 Hz (Euro Plug)		in.
2		025-1000-0306-02	D	Power Supply, 220 V / 50 Hz, South Africa / India		in.
3	1	060-2000-0021-00		Parts List - Coil Spring Tester, 750 lb		in.
4	1	060-1000-0025-00	K	User Manual - ECT / CDHT / FDHT / DHT		in.
5	1	059-0000-0043-00	A	Shipping Crate - SDHT 2000 / CST, 18" range rods		in.
6	1	025-6000-0023-00	B	Sticker Assembly - Coil Spring Tester		in.

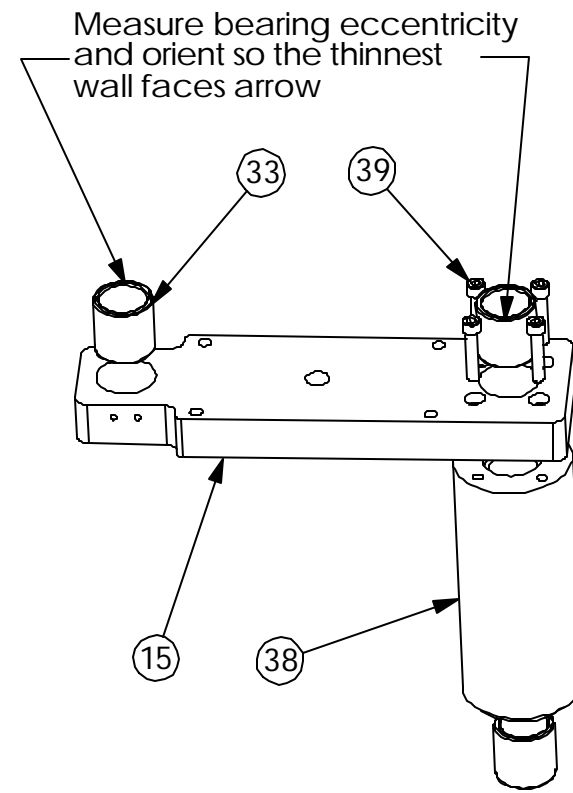
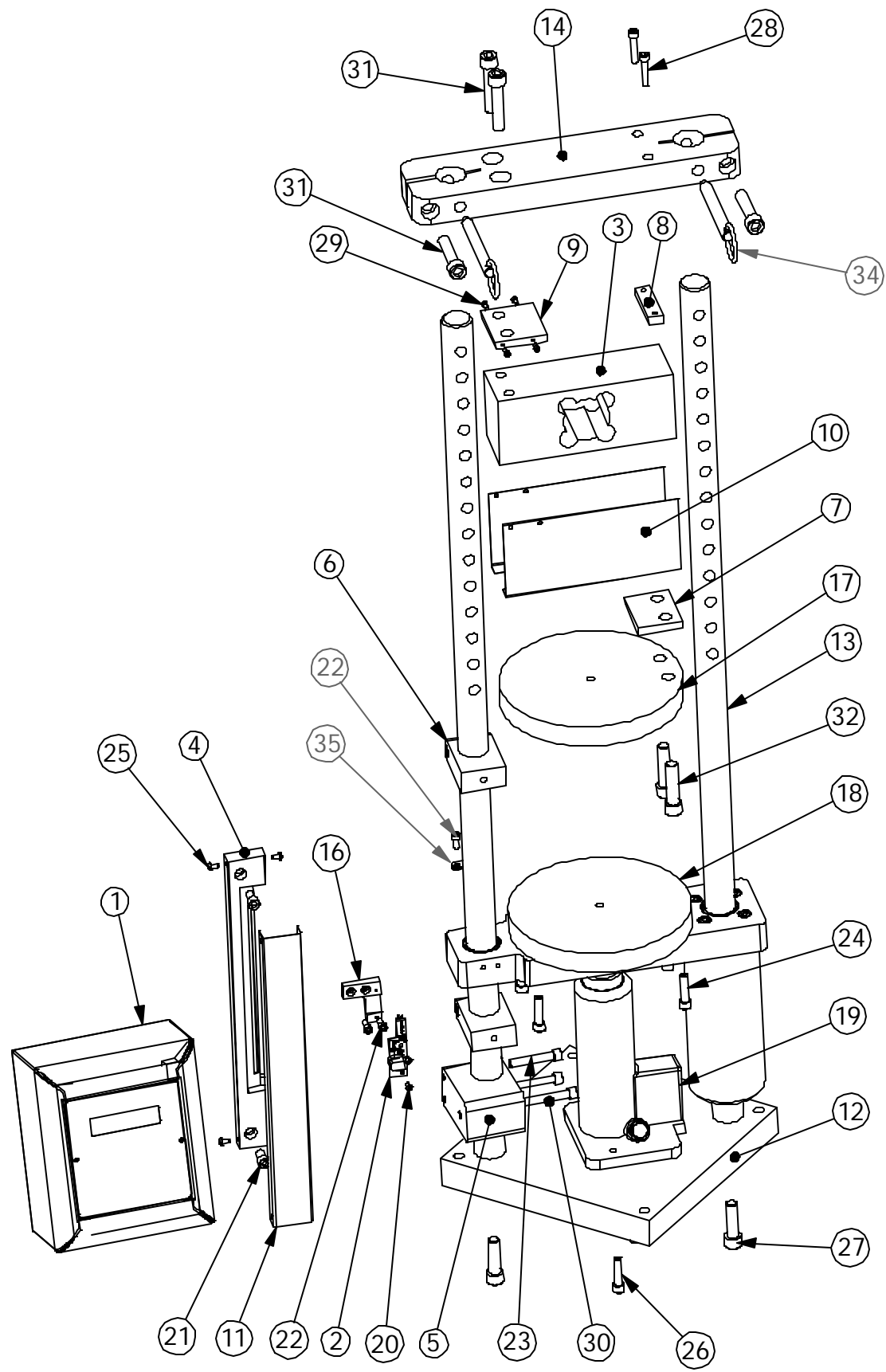
Approved by:

Date:

September 7, 2007


025-0000-0529-XX	DESCRIPTION
025-0000-0529-00	750 lbs
025-0000-0529-01	1500 lbs

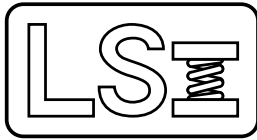
REV.	DATE	DESCRIPTION	DRW	APPROVED
		See Page 2		



Directions for CST assembly:

1. Connect range rods (13) (018-0000-2441) to base plate (12) (018-0000-2440) leaving them loose enough to still rotate.
2. Slide lower alignment fixture over rods down to the base. Make sure the tightening bolts are facing the front of the tester.
3. Slide upper alignment fixture over rods. Check for proper pin alignment by inserting the two form pins in several locations. If a pin does not slide in completely, try rotating the range rod 180 degrees.
4. When you are sure the pins will insert completely set the tester flat on the surface plate.
5. Check to ensure the lower form is square against base plate, and the upper form's two pins are inserted completely.
6. Begin to snug up the bolts on the two forms by beginning with the center bolt and moving the two outer bolts. Make sure to tighten the two outer bolts equally.
7. Clamp the lower fixture to the surface plate with two C-clamps; One C-clamp on either side.
8. Begin to snug up the two bolts securing the range rods, and torque them to 47 ft.-lbs.
9. Loosen the two alignment fixtures and remove them from the tester.
10. Check for proper pin alignment using the top load cell mount (14) (018-0000-2442). If pins do not align start over.
11. Ream the bronze bushings (33) (013-0000-0239) to 1.001 after inserting them into the lower platform mount (15) (018-0000-2443). The bushing should be flush with the top. Make sure excess bushing protrudes from bottom of mount (15).
12. Check to make sure lower mount slides easily on range rods.
13. Mount bottle jack (19) (018-0000-2447) onto the base plate. Make sure the jack is mounted in the direction that centers the jack head between the range rods.
14. Slide force meter clamp (5) (018-0000-1716), scale mount (6) (18-0000-1733), and 1" shaft collar (39) (013-2000-0273) onto the left range rod. Just snug the bolts.
15. Slide lower platform mount onto range rods and down until it touches the jack head.
16. Bolt 6" platform (18) (018-0000-2446) to lower platform mount.
17. Slide scale mount (6) onto left range rod and snug the bolt.
18. Bolt reader head mount (16) (018-0000-2444) to lower platform mount. Use a level to ensure mount is square when tightening.
19. Bolt encoder PCB assembly (2) (025-0000-0351) to reader head mount.
20. Bolt scale assembly (4) (025-0000-0484A) to the two scale mounts.
21. Slide scale assembly (4) and scale mounts (6) up until just below the bottom of the encoder. Make sure to leave a small gap. Bolt on scale assembly cover.
22. Bolt 6" upper platform (17) (018-0000-2445) and load cell spacer (9) (018-0000-1997A) to load cell's bottom. Note: Load cell may need a cover.
23. Bolt top load cell mount (14) and load cell spacer (9) to top of the load cell. Note: if using a cover this load cell spacer must have 4 holes drilled into it.
24. Set load cell overload stop (8) to contact at 115 to 125% FS load.

		<b>LARSON SYSTEMS INC.</b> 10073 Baltimore St. NE PH. 763-780-2131 Mpls., MN 55449 FAX. 763-780-2182	
		Coil Spring Tester ASSY	
APPROVALS	DATE		
DRAWN SMH	11/6/02		
APPR.		B	DWG. NO. 025-0000-0529-XXB
APPR.		SCALE: NONE SHEET 1 OF 3	



# 025-0000-0529-00 B

# Parts List

## Coil Spring Tester Assembly, 750 lb

Rev	By	Date	Description
	SMH	11-06-2002	
A	DAL	05-27-2004	Revise
B	KMP	02-21-2006	Add Items 38 and 39

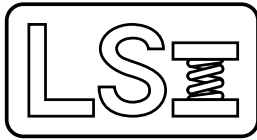
Item	Qty	Part Number	Rev	Part Name	PCB Location	Part Length
1	1	025-0000-0342-06		Force Meter CST 750 / 1500		in.
2	1	025-1000-0351-00		Encoder PCB Assembly		in.
3	1	025-1000-0381-00	A	Load Cell Assembly, 750 lb, CST		in.
4	1	025-0000-0484-00	A	Glass Scale Assembly		in.
5	1	018-0000-1716-00	G	Upgrade Meter Clamp		in.
6	2	018-0000-1733-00	B	Upgrade, Linear Scale Mount		in.
7	1	018-0000-1997-00	B	Load Cell Spacer , SDHT 2000		in.
8	1	018-0000-2000-00	C	Overload Stop SDHT 2000 Load Cell		in.
9	1	018-0000-1997-00	B	Load Cell Spacer , SDHT 2000		in.
10	0	018-0000-2016-00	A	Load Cell Cover 1500 lb		in.
11	1	018-0000-2217-00	B	Encoder Cover		in.
12	1	018-0000-2440-00	A	Base Plate, CST		in.
13	2	018-0000-2441-00	C	Range Rod, CST		in.
14	1	018-0000-2442-00	C	Top Load Cell Mount, CST		in.
15	1	018-0000-2443-00	C	Lower Platform Mount, CST		in.
16	1	018-0000-2444-00		Reader Head Mount, CST		in.
17	1	018-0000-2445-00	A	6" Upper Platform, CST		in.
18	1	018-0000-2446-00		6" Lower Platform, CST		in.
19	1	018-0000-2447-00		Modified Bottle Jack		in.
20	2	013-0000-0020-00		4-40 X 1/4 Button Head Cap Screw		in.
21	2	013-0000-0031-00		1/4-20 X 1/2 SHCS		in.
22	3	013-0000-0058-00		8-32 X 3/8 SHCS		in.
23	2	013-0000-0061-00		1/4-20 X 1 1/2 SHCS		in.
24	6	013-0000-0064-00		1/4-20 X 1 SHCS		in.
25	4	013-0000-0077-00		6-32 X 1/4 Button Head Cap Screw		in.
26	2	013-0000-0087-00		1/4-28 X 3/4 SHCS		in.
27	2	013-0000-0100-00		3/8-16 X 1 1/4 SHCS		in.
28	2	013-0000-0175-00		10-32 X 1 SHCS		in.
29	4	013-0000-0178-00		4-40 X 1/4 SHCS		in.
30	1	013-0000-0254-00		1/4-20 X 2 SHCS		in.

Item #36, 37 are not shown

Approved by: 

Date: May 23, 2006

**SEE ATTACHED DRAWING**



# 025-0000-0529-00 B

# Parts List

## Coil Spring Tester Assembly, 750 lb

Rev	By	Date	Description
	SMH	11-06-2002	
A	DAL	05-27-2004	Revise
B	KMP	02-21-2006	Add Items 38 and 39

Item	Qty	Part Number	Rev	Part Name	PCB Location	Part Length
31	4	013-0000-0309-00		3/8-24 X 1.75 SHCS		in.
31		013-0000-0316-00		M10-1.5 X 45 mm SHCS		in.
32	2	013-0000-0353-00		3/8-24 X 1 1/2 SHCS		in.
32		013-0000-0203-00		M10-1.5 X 30 mm SHCS		in.
33	3	013-2000-0239-00		Bronze Bushing		in.
34	2	013-2000-0272-00		Quick Release Pin, Ø.375		in.
35	1	013-3000-0023-00		Cable Clamp, 3/16" Dia.		in.
36	1	025-1000-0382-00	A	Encoder Cable Assembly		in.
37	ref	060-4000-0066-00	E	DHT Setup Procedure		in.
38	1	018-0000-2824-00		Platform Support , CST		in.
39	4	013-0000-0098-00		1/4-28 X 1 1/4 SHCS		in.

Item #36, 37 are not shown

Approved by: 

Date: May 23, 2006

**SEE ATTACHED DRAWING**



**Larson Systems Inc.**  
10073 Baltimore Street NE  
Minneapolis, MN 55449-4425  
[www.larsonsystems.com](http://www.larsonsystems.com)

763-780-2131  
1-877-780-2131  
Fax: 763-780-2182  
[info@larsonsystems.com](mailto:info@larsonsystems.com)

