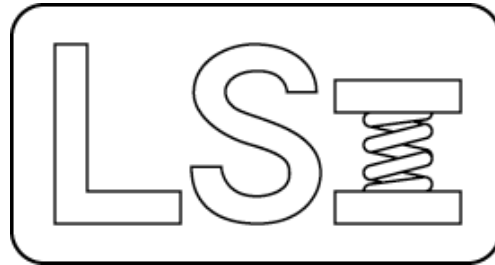


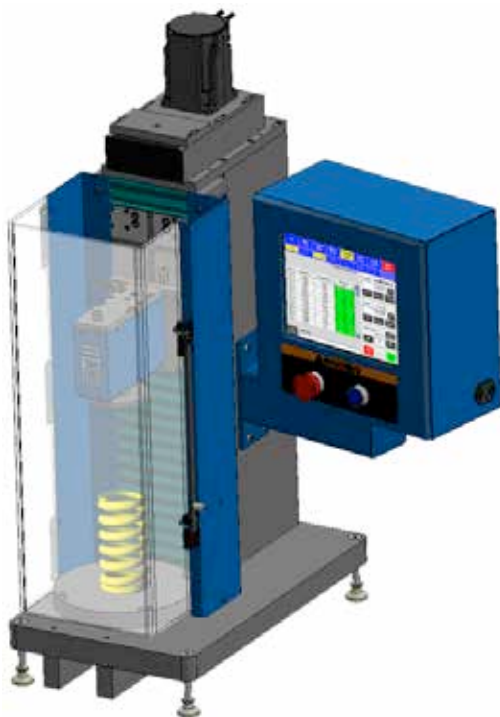
Larson Systems Inc.



STAR 11 Parts List

050-0000-0092-00 – Hinged Guard

050-0000-0092-01 – Light Curtain Guard





050-0000-0092-00 K

Parts List

STAR 11-1000/2000/3000 with Hinged Guard

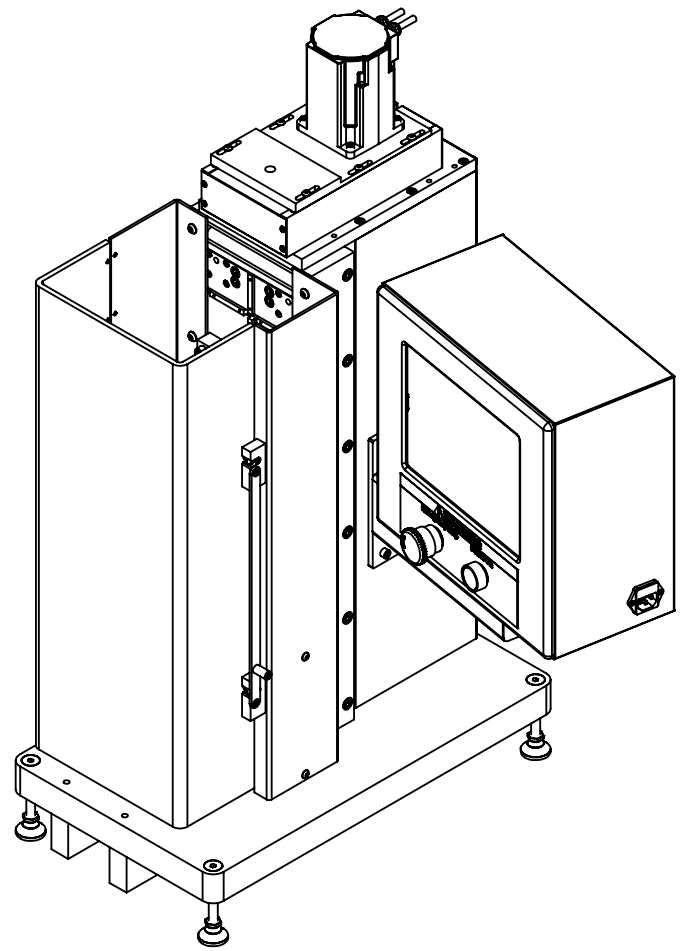
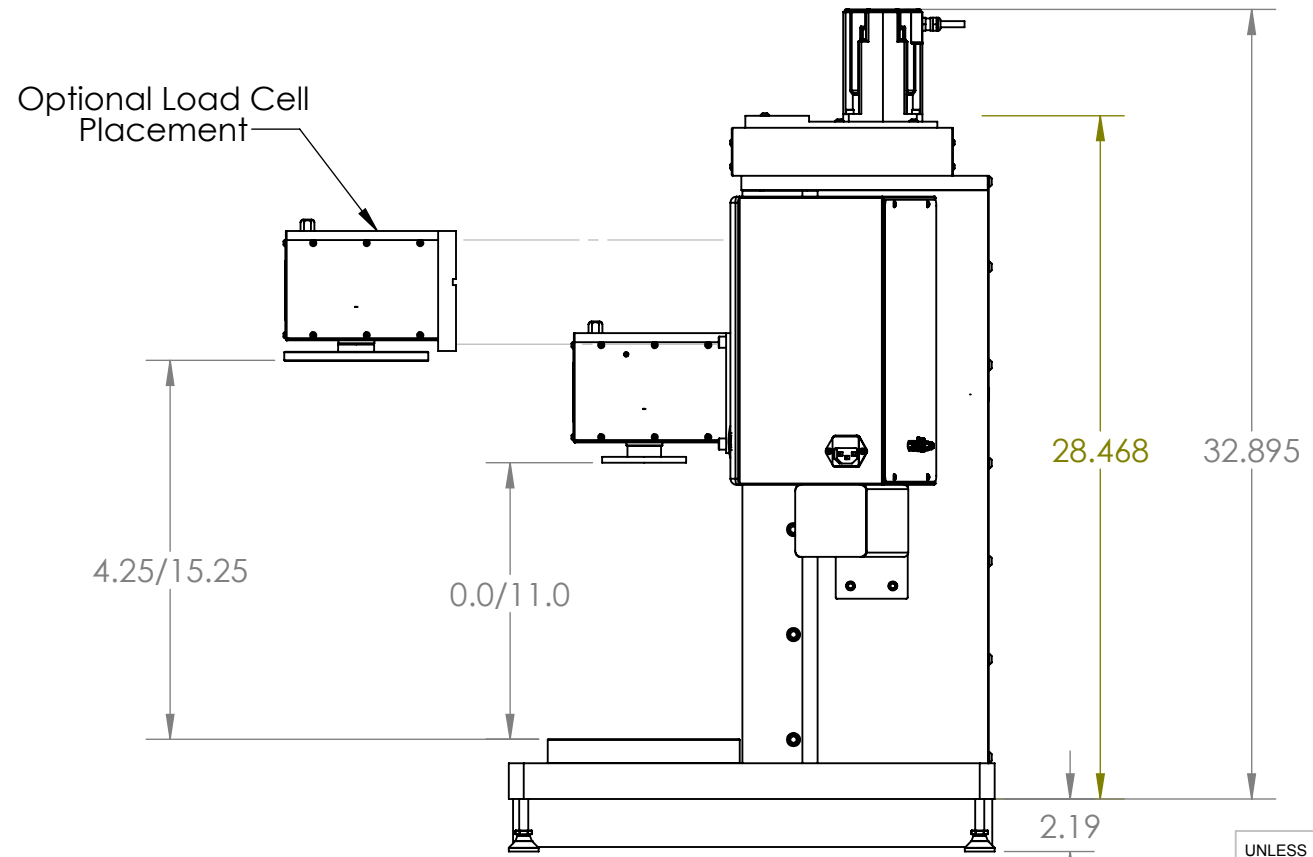
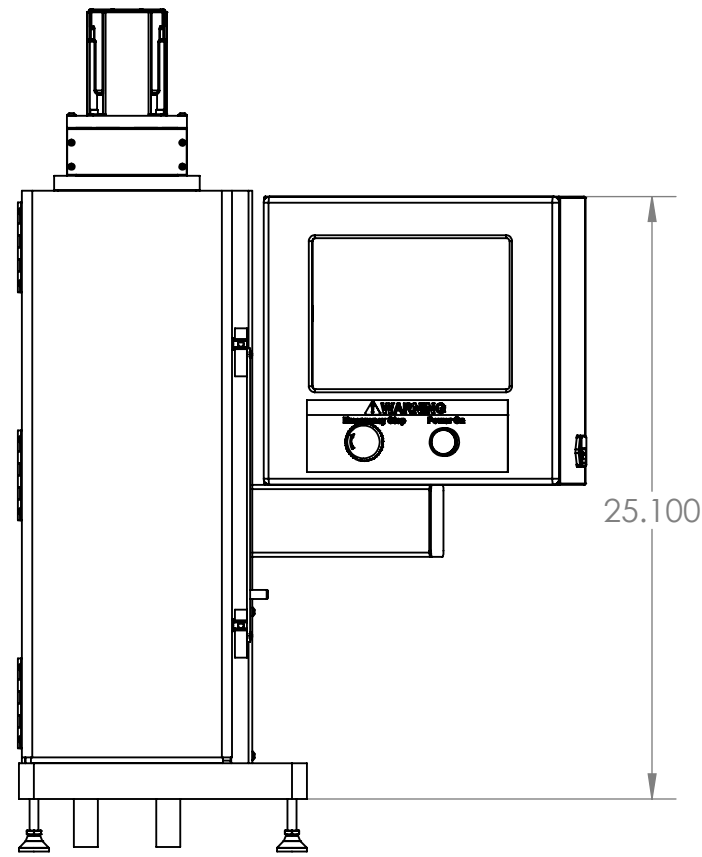
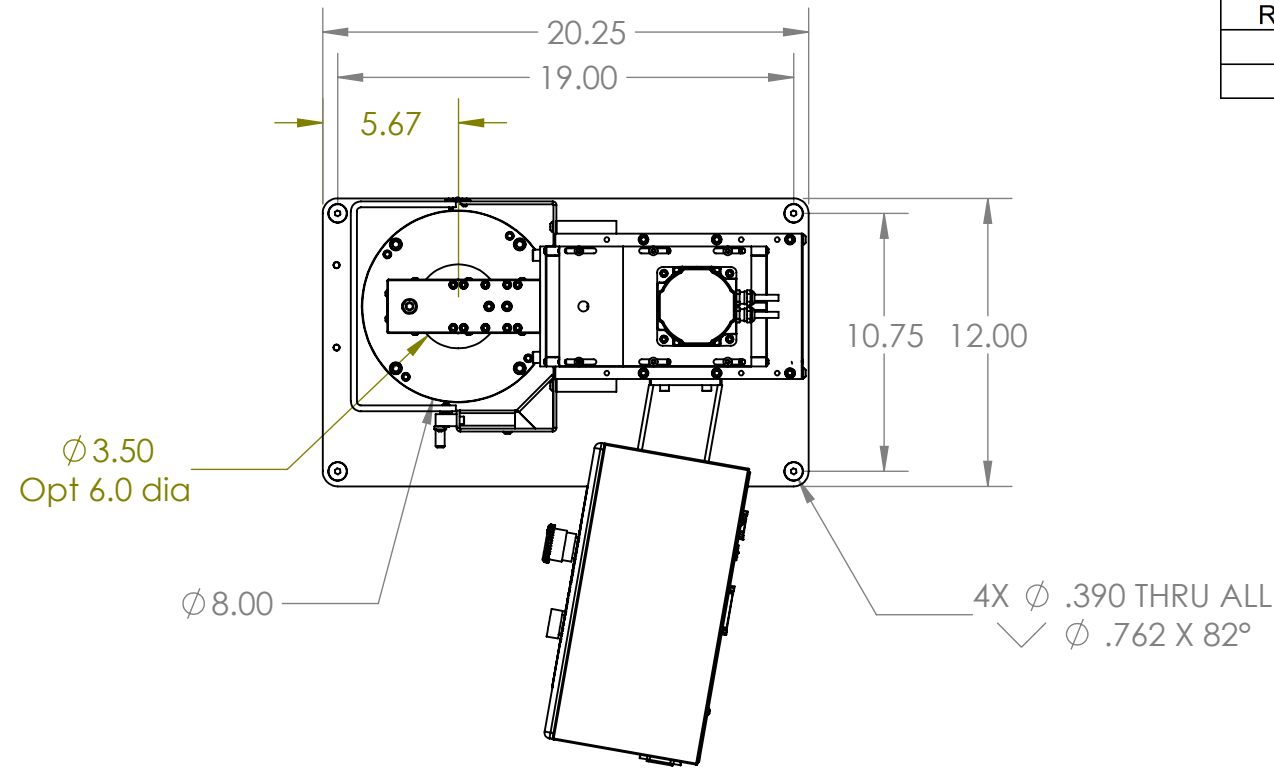
Rev	By	Date	Description
G	DAL	08-08-2008	delete load cell options, listed on quote sheet 500-2000-0007-00
H	DAL	03-28-2012	Updated Schematic, was 025-2000-0160-04 and 025-2000-0160-06 is 025-2000-0165-02
J	DAL	05-03-2013	redesigned guard to have interlock switch and full surround 025-0000-0408-08 was 025-0000-0408-00, deleted 025-0000-0431-10 since it is now included in 025-0000-0408-08
K	DAL	07-24-2013	Added -01


Item	Qty	Part Number	Rev	Part Name	PCB Location	Part Length
2	1	025-0000-0408-08		Star 11, Star Base, attached FLASH, hinged Safety		in.
4	1	025-6000-0013-01	D	Sticker Assembly - STAR 11"		in.
5	1	025-2000-0165-02	E	Schematic, Flash Robo-STAR 11-X000, Attached		in.
6	1	060-1000-0066-01	A	User Manual - STAR and RoboSTAR		in.
7	1	059-0000-0040-00	A	Shipping Crate - STAR / ROBOSTAR 11		in.
8	1	060-2000-0004-00	A	Parts List - STAR 11" Stroke		in.
8	1	060-6000-0114-00		FLASH : System Image Creation Letter		in.

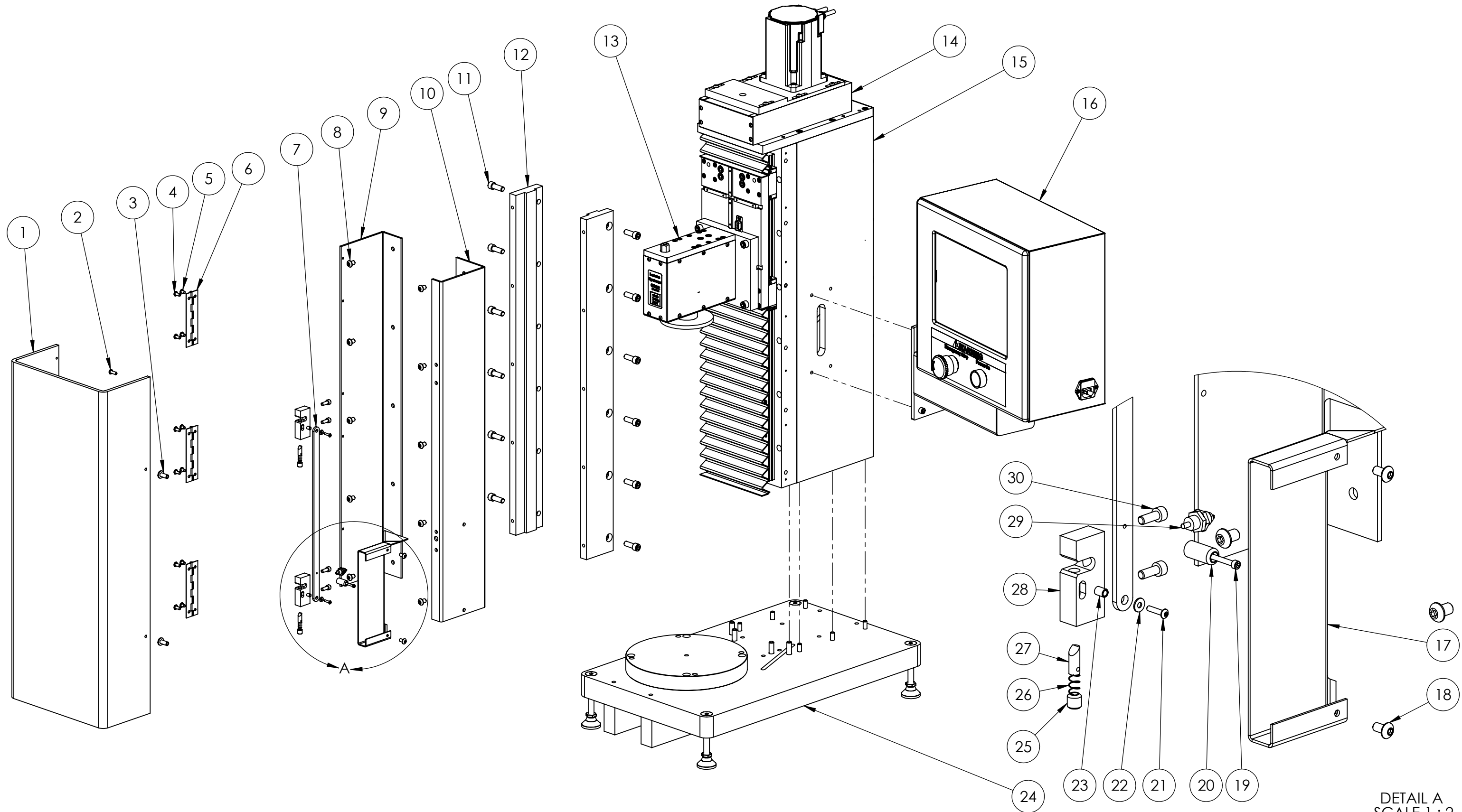
Approved by: 

Date: July 24, 2013

REV	DATE	DESCRIPTION	DRW	APP
		SEE SHEET 3		



UNLESS OTHERWISE SPECIFIED DIMENSIONS ARE IN INCHES TOLERANCES ARE: .XX ± .01 .XXX ± .005		 LARSON SYSTEMS INC. 10073 Baltimore St. NE PH. 763-780-2131 Mpls., MN 55449 FAX. 763-780-2182
MATERIAL	See Parts List	
FINISH	None	APPROVALS DATE DRAWN RRS 03/21/12 APP. APP.
HEAT TREAT	None	Star 11, Star Base, attached FLASH, hinged Safety Guard, feet B DWG. NO. 025-0000-0408-08 SCALE: NONE SHEET 1 OF 4



DETAIL A
SCALE 1 : 2



LARSON SYSTEMS INC.

10073 Baltimore St. NE PH. 763-780-2131
Mpls., MN 55449 FAX. 763-780-2182

B SCALE: NONE

DWG. NO. 025-0000-0408-08

SHEET 2 OF 4



025-0000-0408-08

Parts List

Star 11, Star Base, attached FLASH, hinged Safety

Rev	By	Date	Description
	DAL	04-30-2013	

Item	Qty	Part Number	Rev	Part Name	PCB Location	Part Length
1	1	018-0000-2059-06		Shield, STAR 11		in.
2	2	013-0000-0029-00		8-32 X 1/2 Button Head Cap Screw		in.
3	2	018-0000-2061-00	B	Shield Pin		in.
4	6	013-0000-0012-00		8-32 X 3/8 Button Head Cap Screw		in.
5	6	013-0000-0028-00		8-32 X 1/4 BHSCS		in.
6	3	018-0000-2065-02		Shield Hinge, 4" with 2 holes		in.
7	1	018-0000-2062-00	D	Latch Release		in.
8	10	013-0000-0128-00		1/4-20 X 3/8 BHSCS		in.
9	1	018-0000-3514-01		Door Hinge Mounting Bracket, STAR 11		in.
10	1	018-0000-3516-01		Door Latch Mounting Bracket, STAR 11		in.
11	12	013-0000-0274-00		5/16-18 X 7/8 SHCS		in.
12	2	018-0000-3513-01		Shield Mount, STAR 11		in.
13	ref	025-0000-0414-05	J	STAR Series Smart Load Cell - 110 lb (3.5" Ø Platform)		in.
14	1	025-0000-0419-03	F	Standard Capacity 1000 lb Drive, STAR / RoboSTAR		in.
14	opt	025-0000-0419-00	F	High Capacity 2000 lb Drive, STAR / RoboSTAR 240		in.
14	opt	025-0000-0419-02	F	High Capacity Force, 3000 lb, STAR / RoboSTAR 240		in.
15	1	025-0000-0408-07	A	Star Basic Frame / less side cover controls		in.
16	1	025-0000-0431-13		FLASH - Robostar attached head		in.
17	1	018-0000-3517-00		Door Interlock switch wire shield, STAR 11/25		in.
18	2	013-0000-0118-00		10-24 X 3/8 BHSCS		in.
19	1	013-0000-0291-00		4-40 X 3/4 SHCS		in.
20	1	018-0000-2072-00	B	Latch Release Knob		in.
21	2	013-0000-0018-00		4-40 X 1/2 BHSCS		in.
22	2	013-2000-0131-00		#4 Flat Washer		in.
23	2	018-0000-2069-00	C	Latch Spacer		in.
24	1	025-0000-0874-01		Star Base Assembly with feet		in.
25	2	013-0000-0318-00		5/16-18 X 5/16 SSSFPT		in.
26	2	013-0000-0319-00		Spring .240Ø x .500		in.
27	2	018-0000-2063-00	A	Latch Pin		in.
28	2	018-0000-2060-01		Shield Latch, FLASH 11, 24		in.

Approved by: *Dal & Zam*

Date: May 3, 2013

SEE ATTACHED 2 DRAWINGS



025-0000-0408-08

Parts List

Star 11, Star Base, attached FLASH, hinged Safety

Rev	By	Date	Description
	DAL	04-30-2013	

Item	Qty	Part Number	Rev	Part Name	PCB Location	Part Length
29	1	025-1000-0395-01	B	Cable, STAR Door Interlock Switch		in.
30	4	013-0000-0196-00		10-32 X 1/2 SHCS		in.

Approved by: 

Date: May 3, 2013

SEE ATTACHED 2 DRAWINGS



050-0000-0092-01 K

Parts List

STAR 11-1000/2000/3000 with Light Curtain Guard

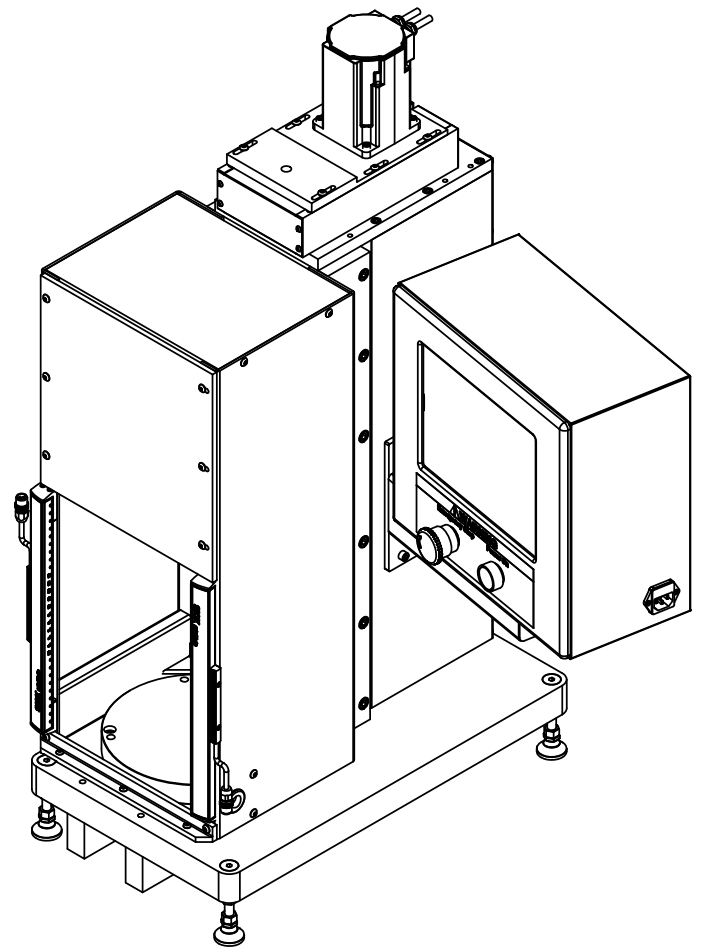
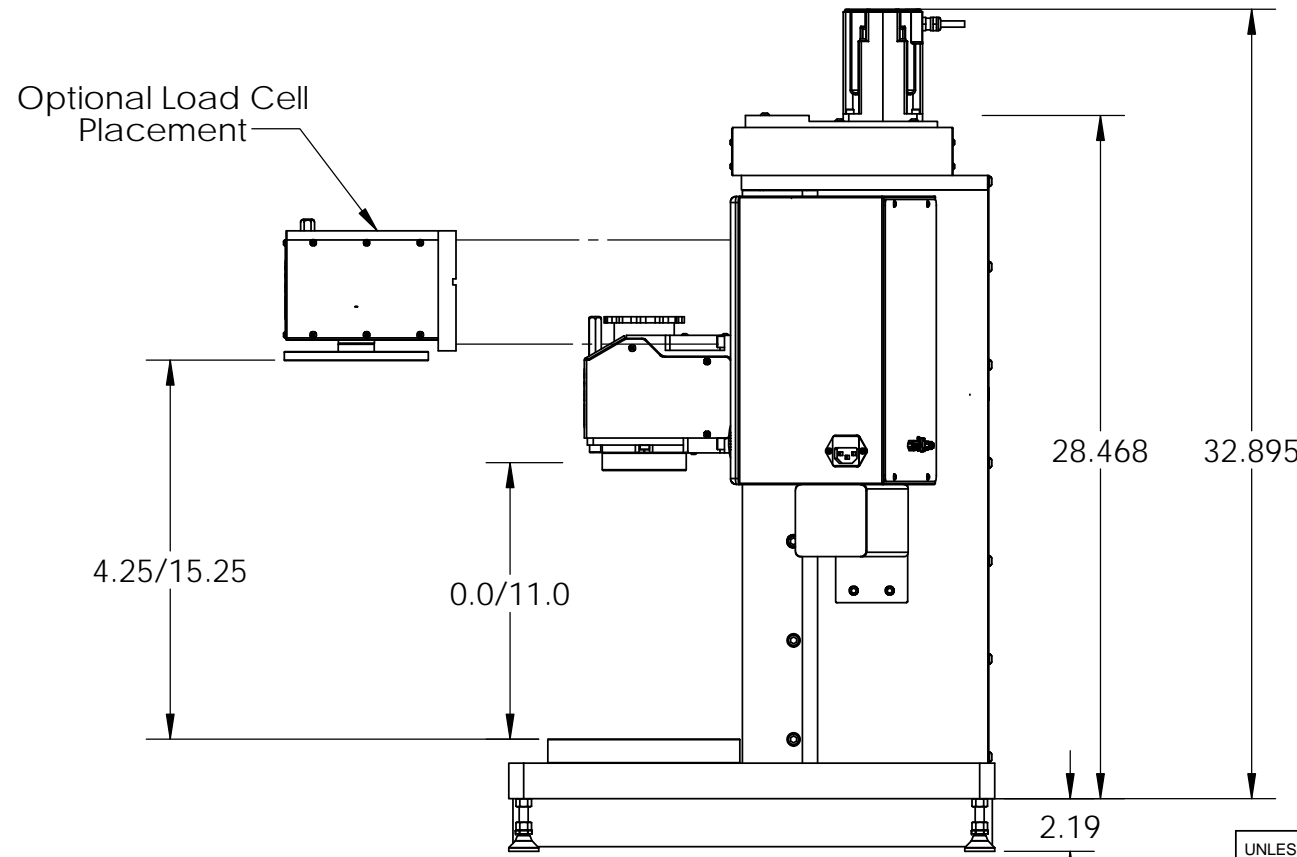
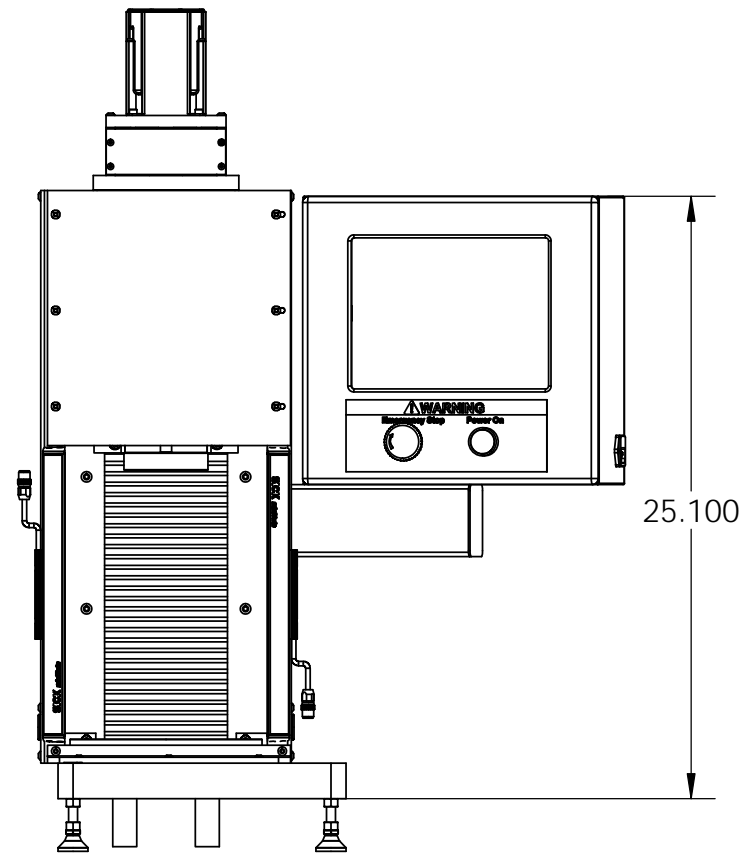
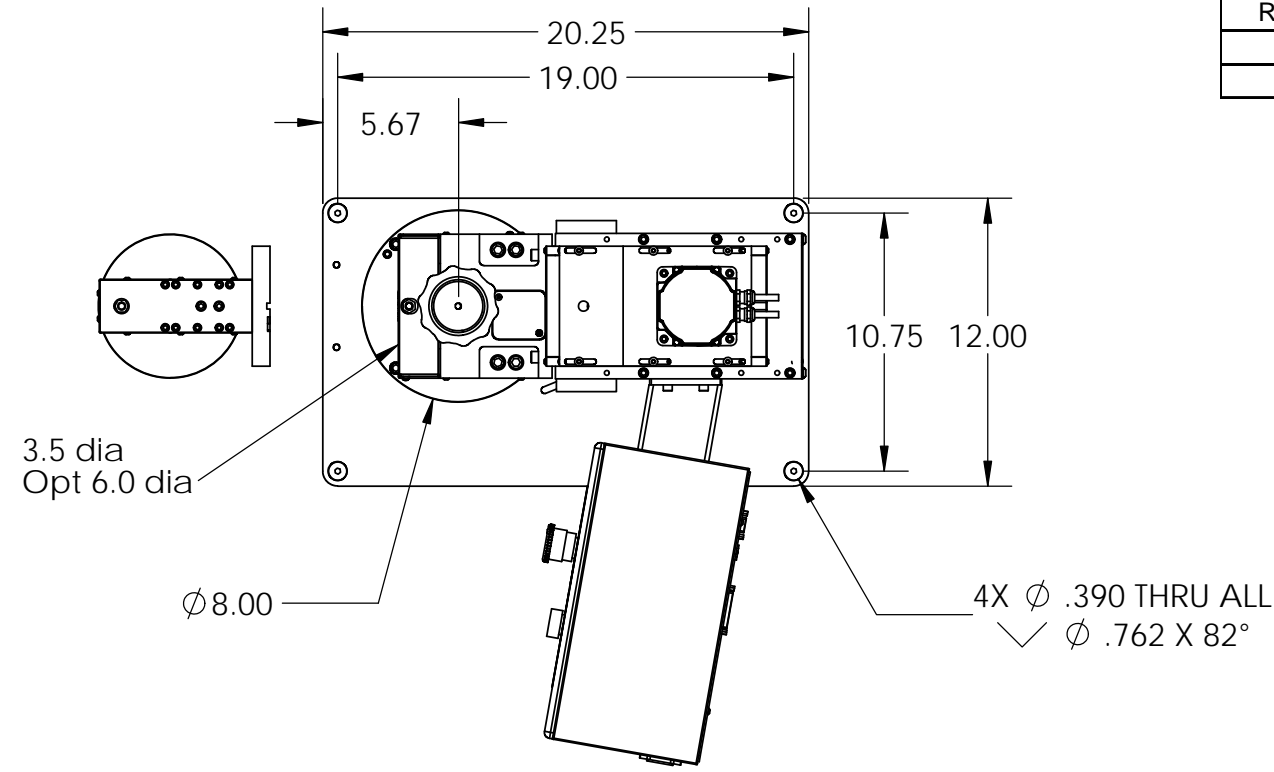
Rev	By	Date	Description
G	DAL	08-08-2008	delete load cell options, listed on quote sheet 500-2000-0007-00
H	DAL	03-28-2012	Updated Schematic, was 025-2000-0160-04 and 025-2000-0160-06 is 025-2000-0165-02
J	DAL	05-03-2013	redesigned guard to have interlock switch and full surround 025-0000-0408-08 was 025-0000-0408-00, deleted 025-0000-0431-10 since it is now included in 025-0000-0408-08
K	DAL	07-24-2013	Added -01


Item	Qty	Part Number	Rev	Part Name	PCB Location	Part Length
2	1	025-0000-0408-09	A	Star 11, Star Base, with light curtain, feet		in.
4	1	025-6000-0013-01	D	Sticker Assembly - STAR 11"		in.
5	1	025-2000-0165-14		Schematic STAR 11, Light curtains		in.
6	1	060-1000-0066-01	A	User Manual - STAR and RoboSTAR		in.
7	1	059-0000-0040-00	A	Shipping Crate - STAR / ROBOSTAR 11		in.
8	1	060-2000-0004-00	A	Parts List - STAR 11" Stroke		in.
8	1	060-6000-0114-00		FLASH : System Image Creation Letter		in.

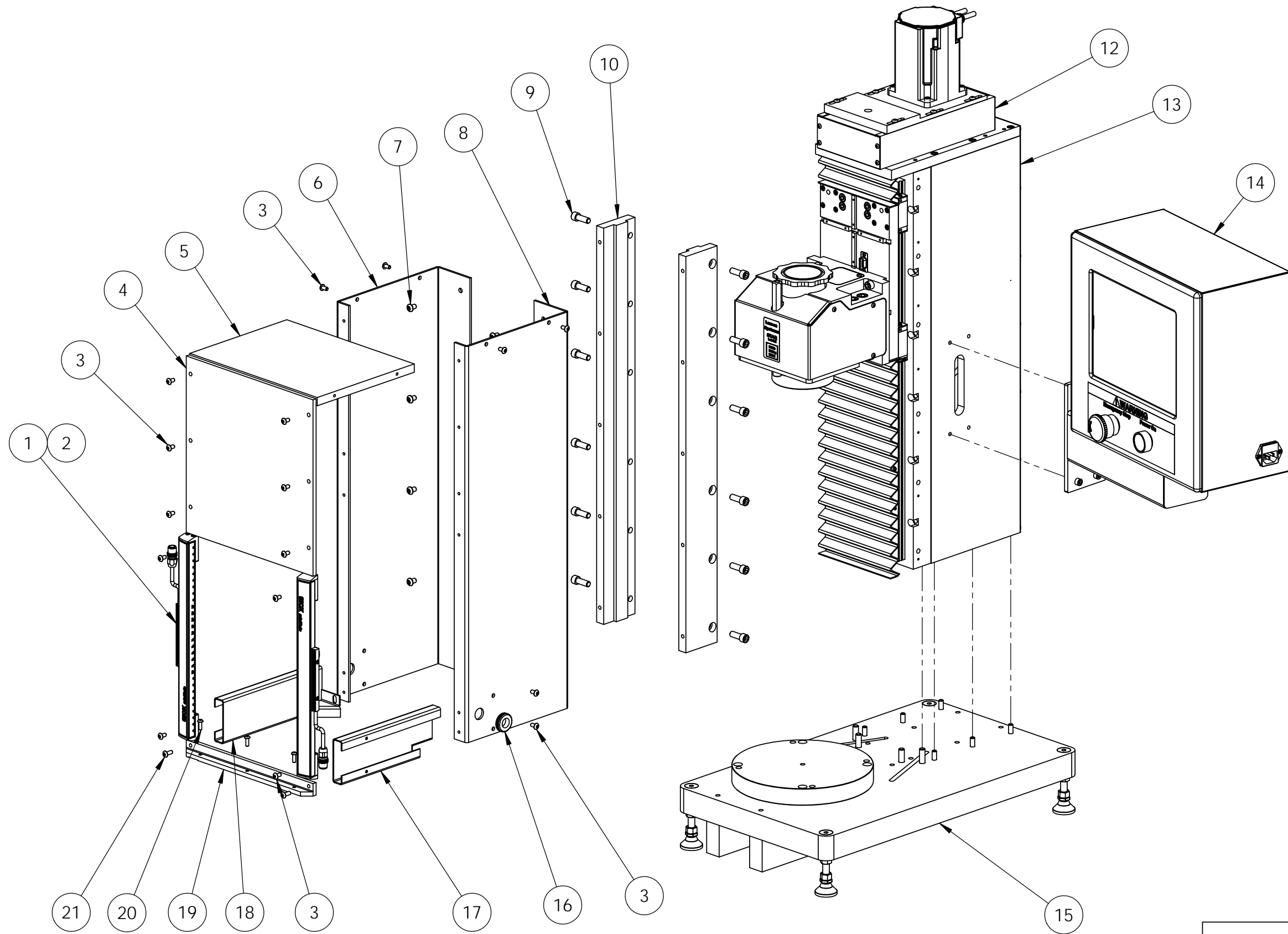
Approved by: 

Date: July 24, 2013

REV	DATE	DESCRIPTION	DRW	APP
		SEE SHEET 3		



UNLESS OTHERWISE SPECIFIED DIMENSIONS ARE IN INCHES TOLERANCES ARE: .XX ± .01 .XXX ± .005			LARSON SYSTEMS INC. 10073 Baltimore St. NE PH. 763-780-2131 Mpls., MN 55449 FAX. 763-780-2182	
MATERIAL	See Parts List		APPROVALS	DATE
FINISH	None	DRAWN	RRS 05/31/13	
HEAT TREAT	None	APP.		B DWG. NO. 025-0000-0408-09A
SCALE: NONE			SHEET 1 OF 3	





025-0000-0408-09 A

Parts List

Star 11, Star Base, with light curtain, feet

Rev	By	Date	Description
	DAL	05-17-2013	
A	RRS	06-14-2013	Add items 19-22

Item	Qty	Part Number	Rev	Part Name	PCB Location	Part Length
1	1	014-3000-0009-00		300 mm Light Curtain		in.
2	2	014-3000-0009-02		Cable		in.
3	18	013-0000-0118-00		10-24 X 3/8 BHSCS		in.
4	1	018-0000-3521-00	A	Star 11 light curtain upper shield		in.
5	1	018-0000-3522-00		Star 11 light curtain top shield		in.
6	1	018-0000-3516-03	B	Light Curtain, Left mounting bracket, STAR 11		in.
7	10	013-0000-0128-00		1/4-20 X 3/8 BHSCS		in.
8	1	018-0000-3516-02	B	Light Curtain, Right mounting bracket, STAR 11		in.
9	12	013-0000-0274-00		5/16-18 X 7/8 SHCS		in.
10	2	018-0000-3513-01		Shield Mount, STAR 11		in.
11	ref	025-0000-0414-00	J	STAR Series Smart Load Cell - 2000 lb (6" Ø Platform)		in.
12	1	025-0000-0419-03	F	Standard Capacity 1000 lb Drive, STAR / RoboSTAR		in.
12	opt	025-0000-0419-00	F	High Capacity 2000 lb Drive, STAR / RoboSTAR 240		in.
12	opt	025-0000-0419-02	F	High Capacity Force, 3000 lb, STAR / RoboSTAR 240		in.
13	1	025-0000-0408-07	B	Star Basic Frame / less side cover controls		in.
14	1	025-0000-0431-13	A	FLASH - Robostar attached head		in.
15	1	025-0000-0874-02		Star Base Assembly with feet for light curtain STAR		in.
16	2	013-2000-0055-00		9/16 ID RUBBER GROMMET		in.
17	1	018-0000-3517-01	B	Light Curtain interlock wire right shield STAR 11/25		in.
18	1	018-0000-3517-02	B	Light Curtain interlock wire left shield STAR 11/25		in.
19	1	018-0000-3526-00		Angle Clamp, STAR Light Curtain		in.
20	3	013-0000-0029-00		8-32 X 1/2 Button Head Cap Screw		in.
21	2	013-0000-0026-00		10-24 X 1/2 BHSCS		in.
22	1	025-2000-0165-14		Schematic STAR 11, Light curtains		in.

Approved by: *Dal & Zam*

Date: July 24, 2013

SEE ATTACHED 2 DRAWINGS



Larson Systems Inc.
10073 Baltimore Street NE
Minneapolis, MN 55449-4425
www.larsonsystems.com

763-780-2131
1-877-780-2131
Fax: 763-780-2182
info@larsonsystems.com

