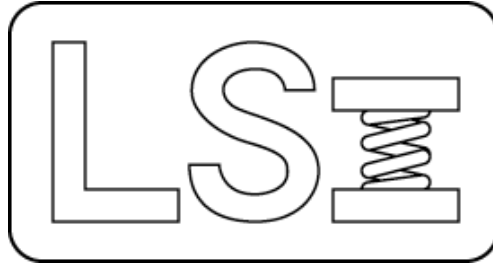


Larson Systems Inc.

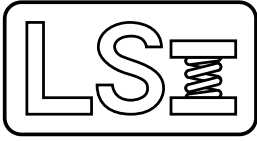


FLASH Lite 11 Parts List

050-0000-0133-00 – 200 lb. Whisper Drive

050-0000-0132-00 – 1,000 lb. Whisper Drive





050-0000-0133-00 A
FLASH LITE 11 - 200 lb

Parts List

Rev	By	Date	Description
	KMP	10-02-2006	
A	DAL	07-19-2010	del 018-0000-2477-00, 013-0000-0231-00, add 059-0000-0060-00

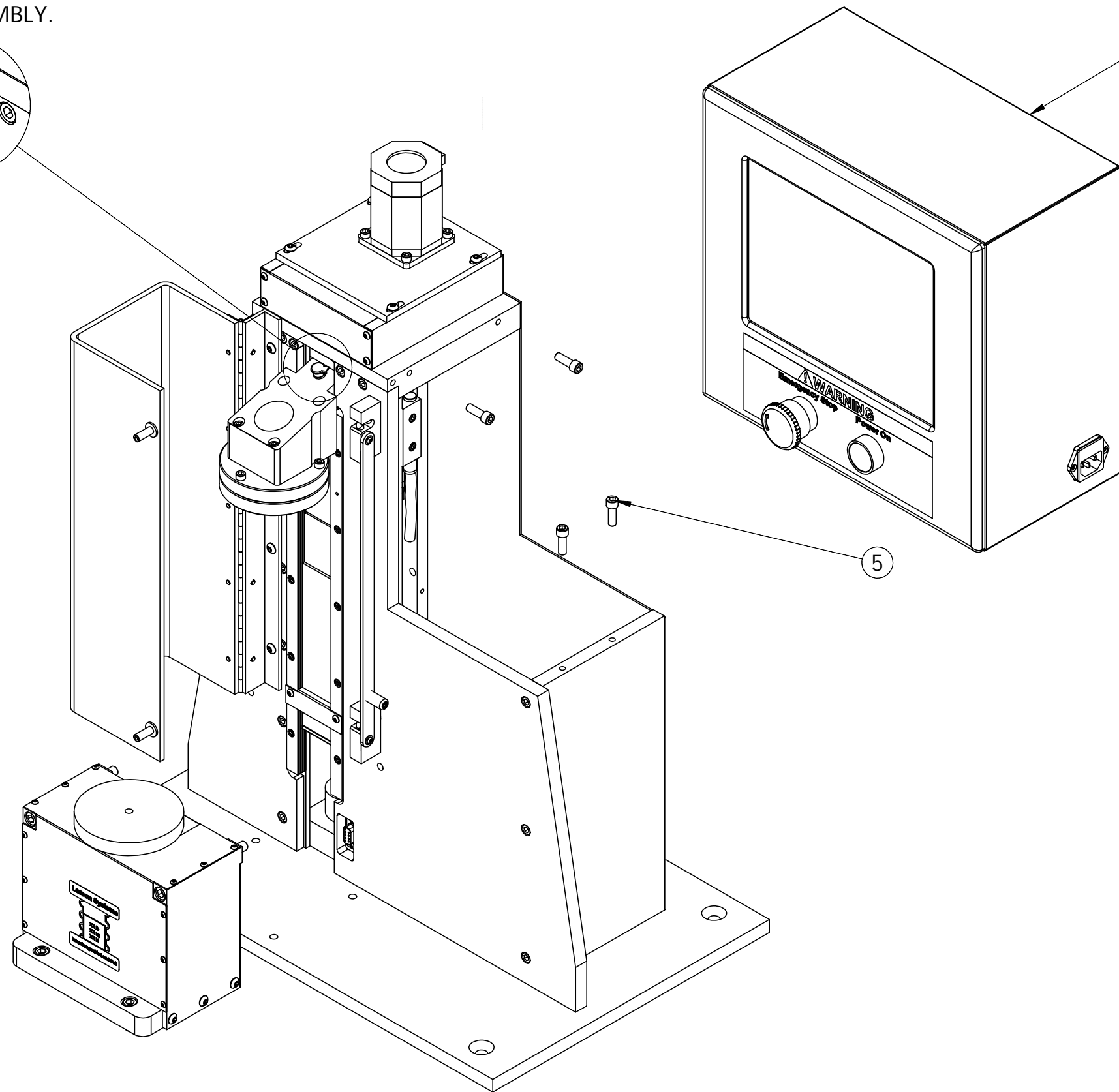
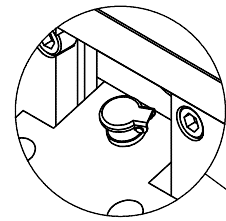
Item	Qty	Part Number	Rev	Part Name	PCB Location	Part Length
1	1	025-0000-0174-10		Frame Assembly, 11 200 lb		in.
2	1	025-0000-0342-07	C	Flashlite Computer Assembly		in.
3	1	025-2000-0130-01	A	Electrical Schematic, FLASHLITE 11/24, 200 lb 120 / 240 VAC		in.
4	1	060-1000-0087-00		User Manual - FLASH Lite		in.
5	1	060-2000-0024-00		Parts List - FLASH 11		in.
6	1	025-6000-0029-00	A	Sticker Assembly - FLASH LITE		in.
7	1	059-0000-0060-00		Shipping Crate for Flash 11		in.

Approved by: 

Date: July 20, 2010

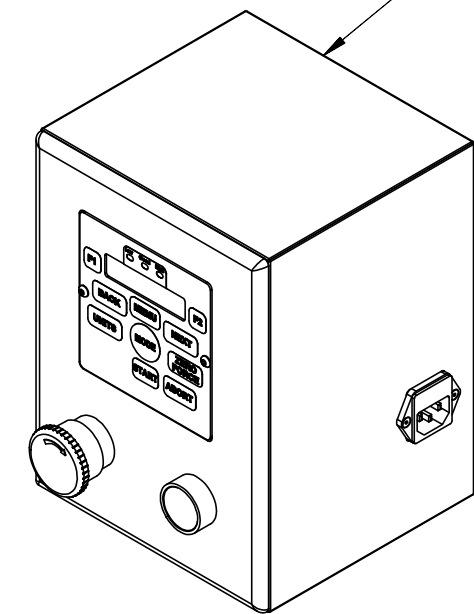
REV	DATE	DESCRIPTION	DRW	APP
.	.	SEE SHEET 5	.	.


NOTE: 1. ADD OIL TO ITEM 15
AFTER ASSEMBLY.



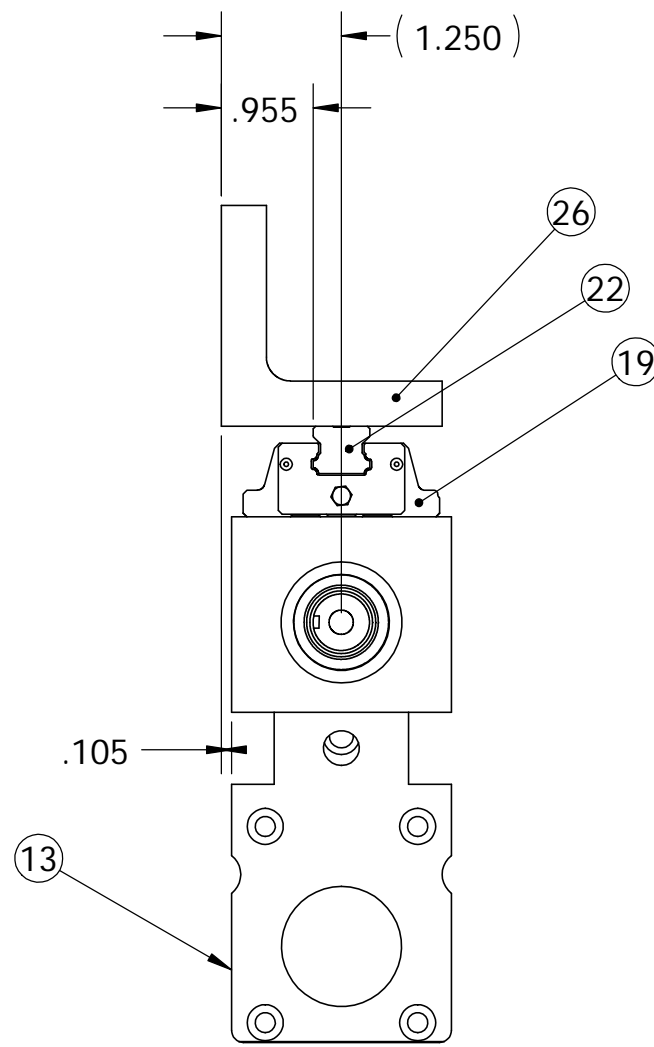
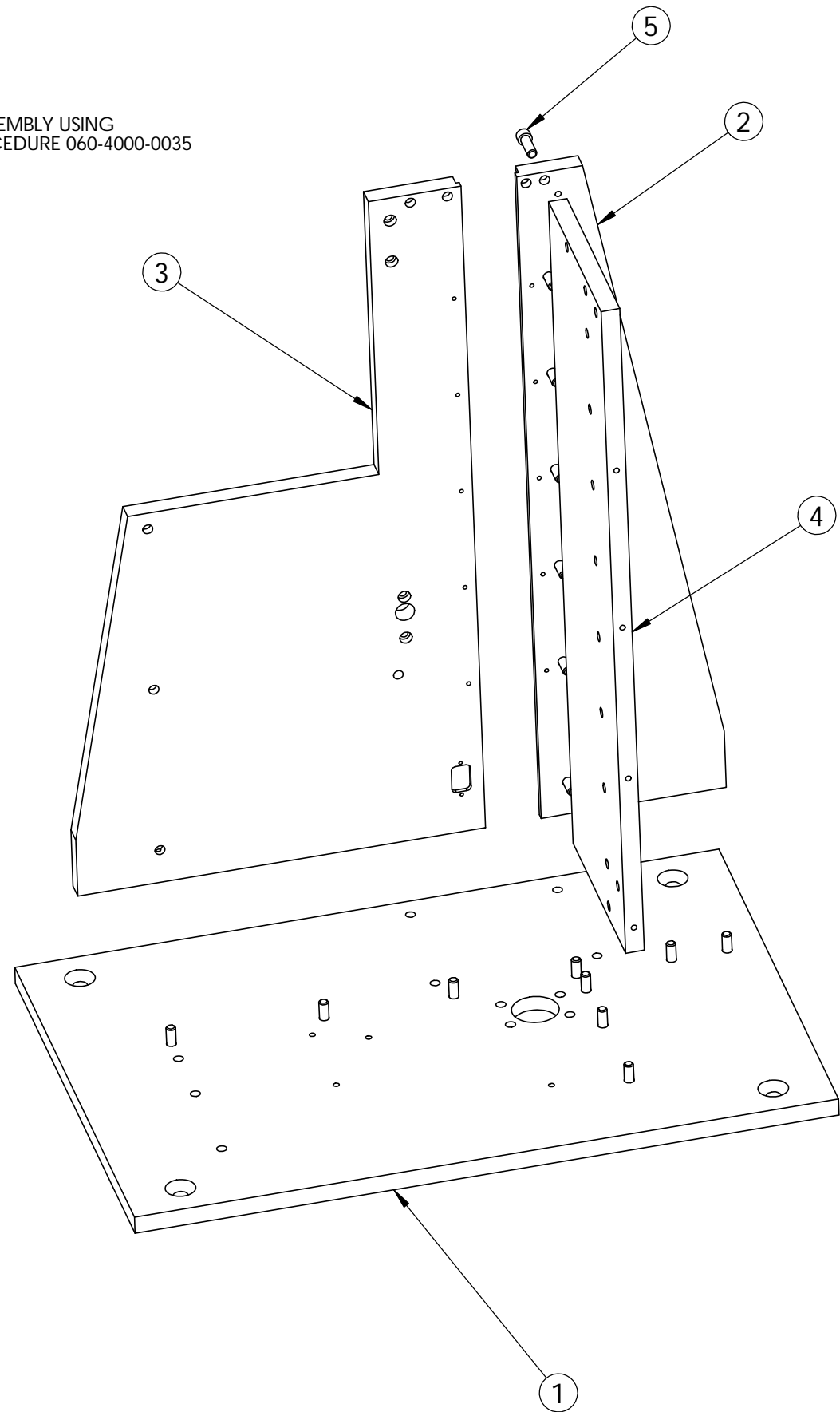
FLASH
REF. ONLY

FLASHLITE
REF. ONLY

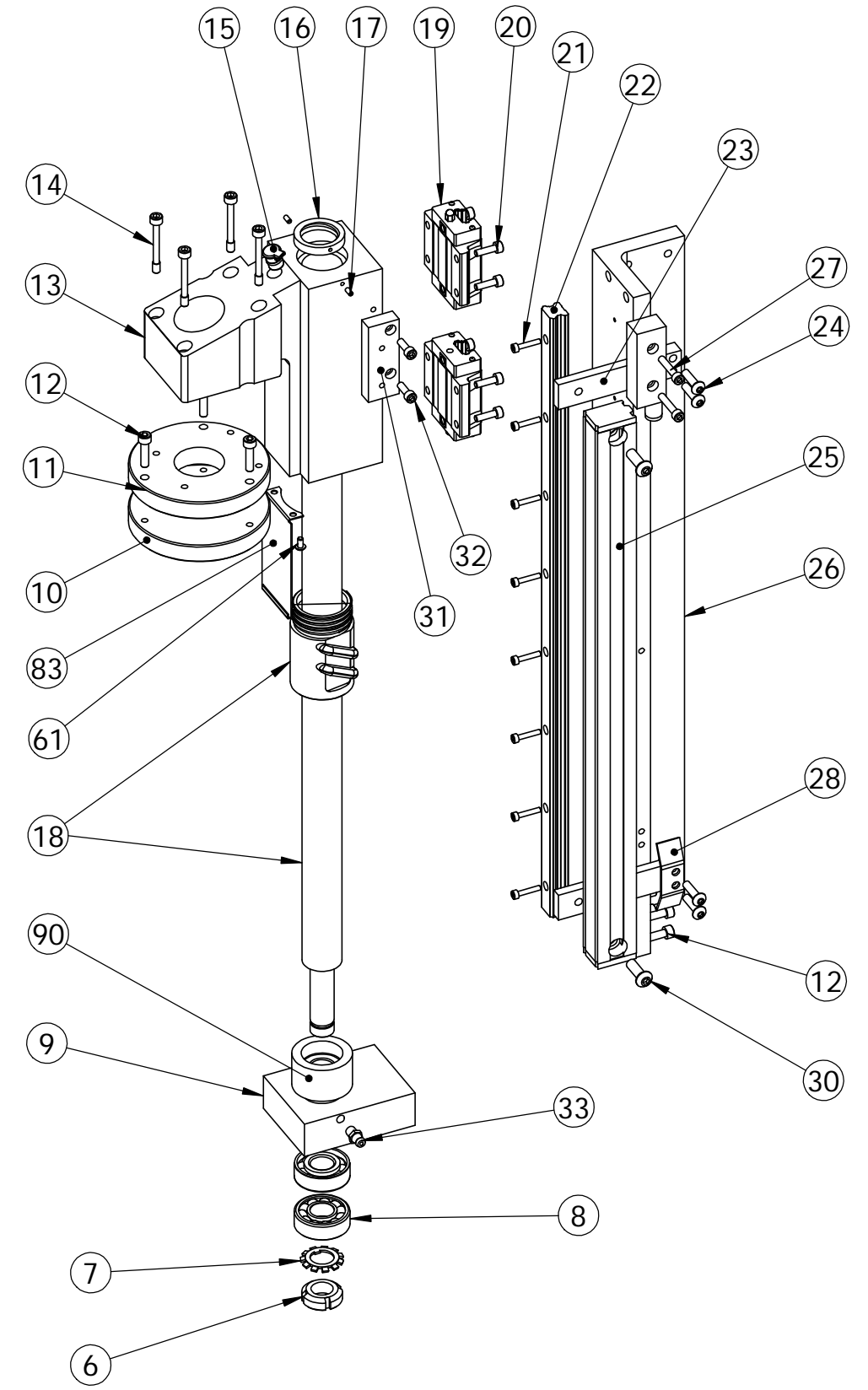
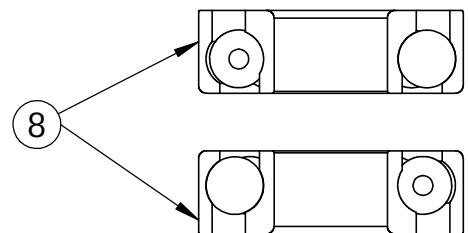


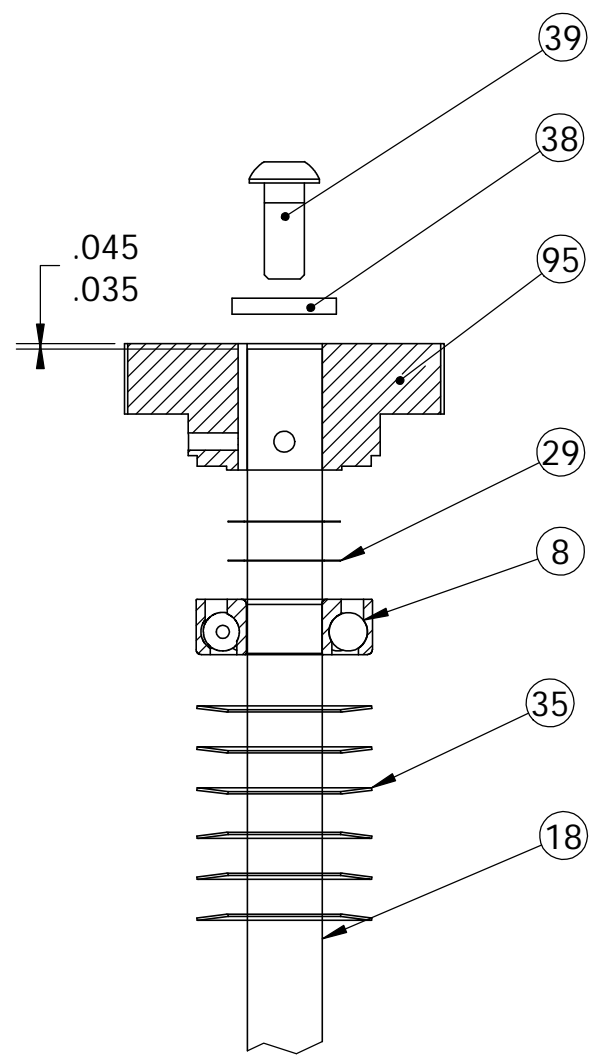
UNLESS OTHERWISE SPECIFIED DIMENSIONS ARE IN INCHES TOLERANCES ARE: .XX ± .01 .XXX ± .005	 LARSON SYSTEMS INC. 10073 Baltimore St. NE PH. 763-780-2131 Mpls., MN 55449 FAX. 763-780-2182	
APPROVALS DRAWN MEM		DATE 02-10-03
APPR.		DWG. NO. B 025-0000-0174-10
APPR.		SCALE: NONE

NOTES:
 1. SQUARE UP ASSEMBLY USING
 FIXTURE & PROCEDURE 060-4000-0035

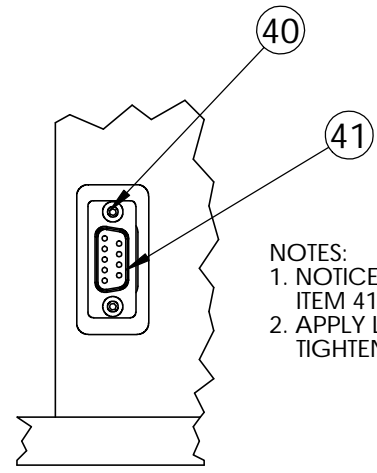
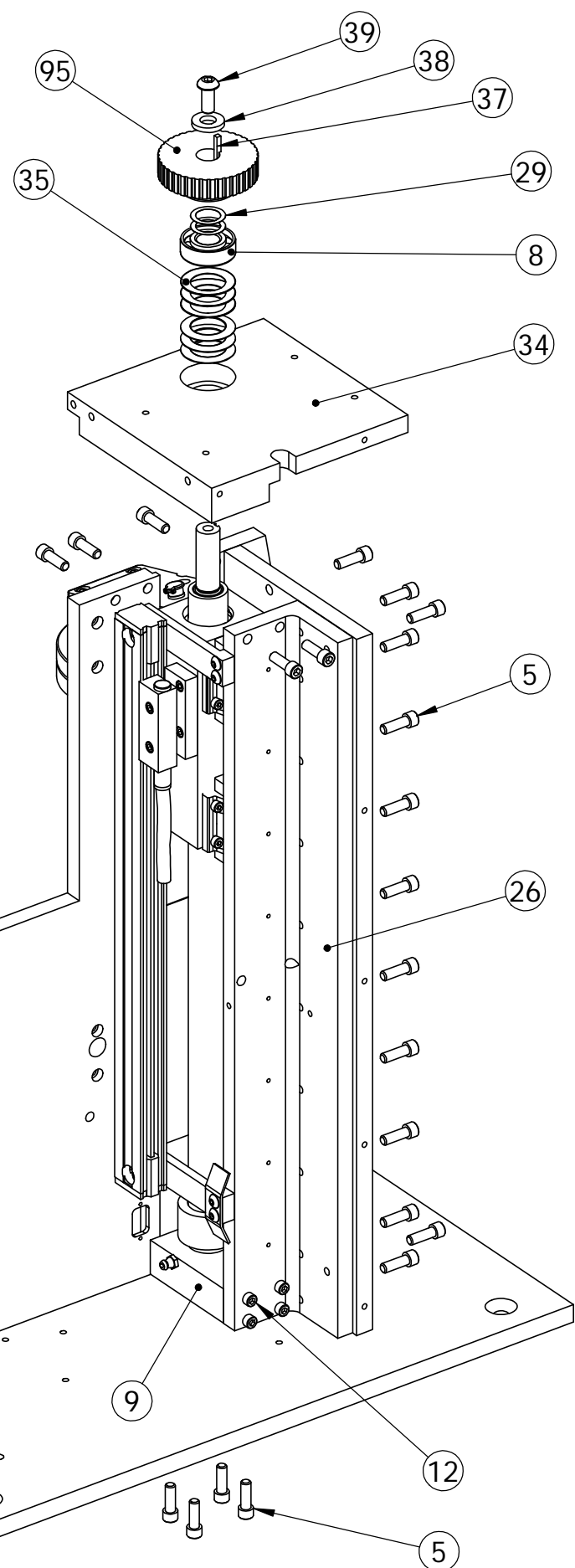


NOTES:
 1. ALIGN ITEMS 13, 22 & 26 TO ACHIEVE
 DIM .955 & .105
 2. GREASE ITEM 8
 3. NOTICE ORIENTATION OF BEARINGS,
 ITEM 8
 4. GREASE SURFACES OF ITEM 7 THEN
 FASTEN ITEM 6, TORQUE 40 FT/LB
 5. TIGHTEN FINGERTIGHT ITEM 9 TO 12
 6. TIGHTEN BALL NUT, ITEM 18 TO 40 FT/LB
 7. NOTICE ORIENTATION OF ITEM 15

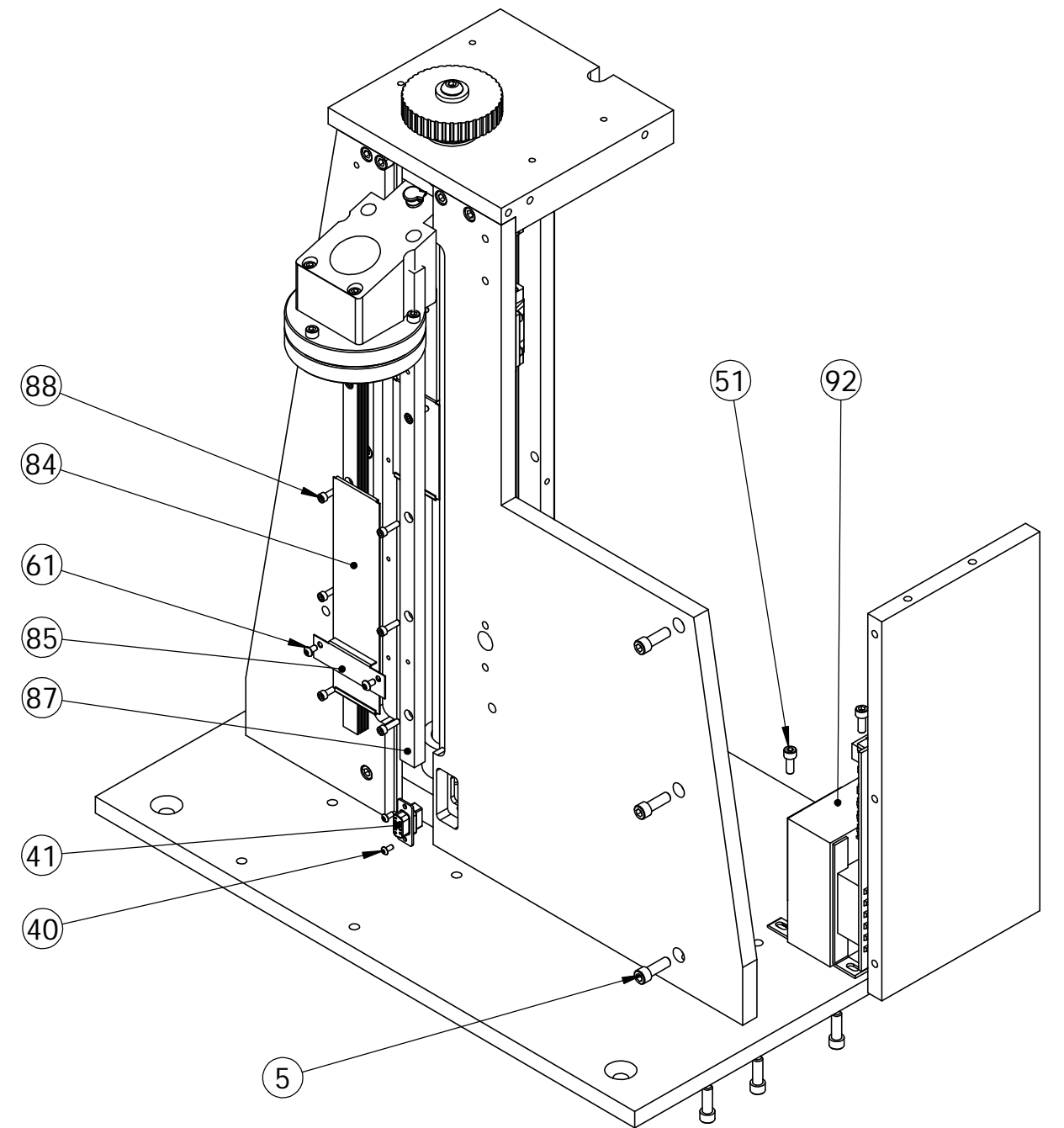


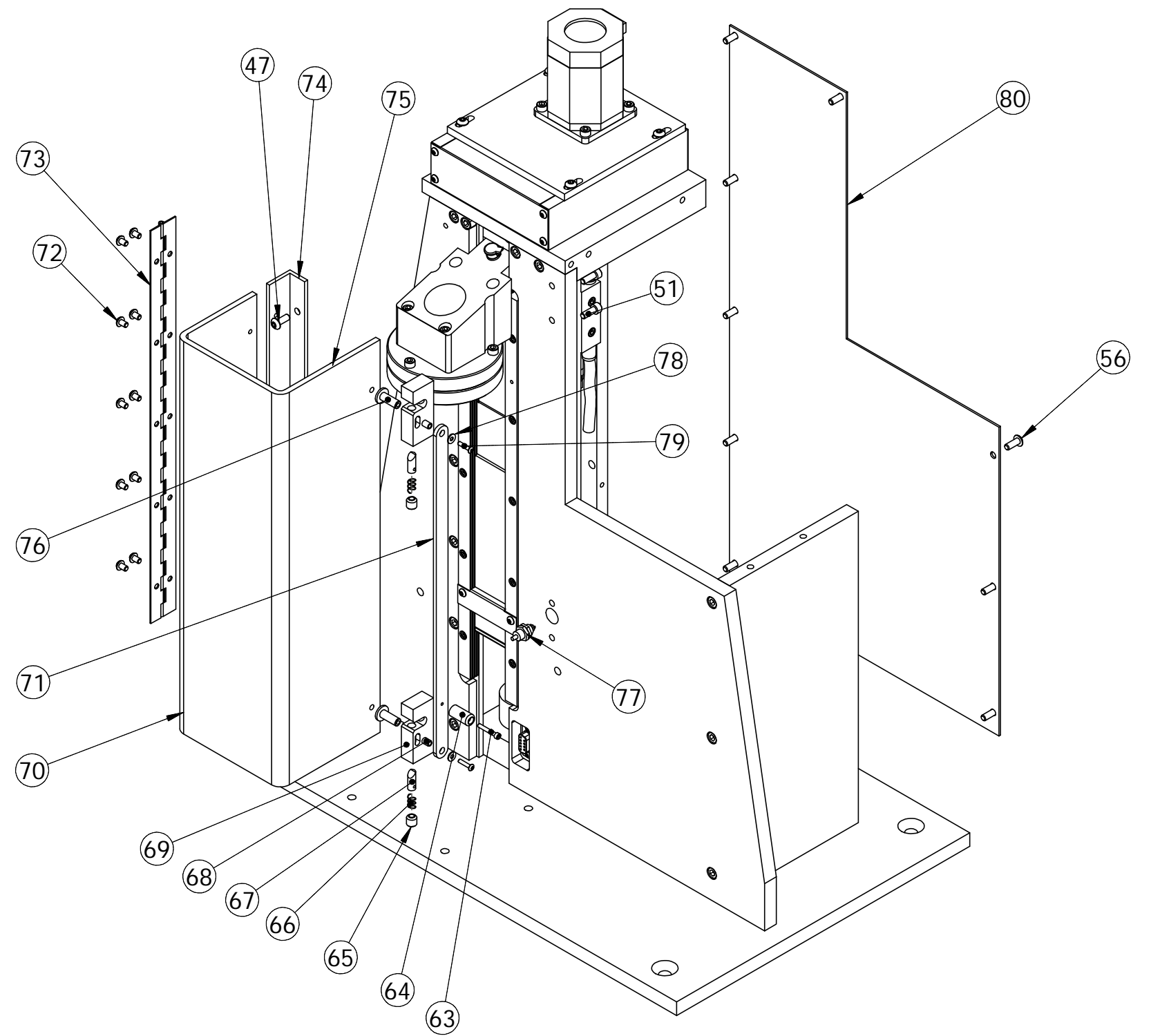
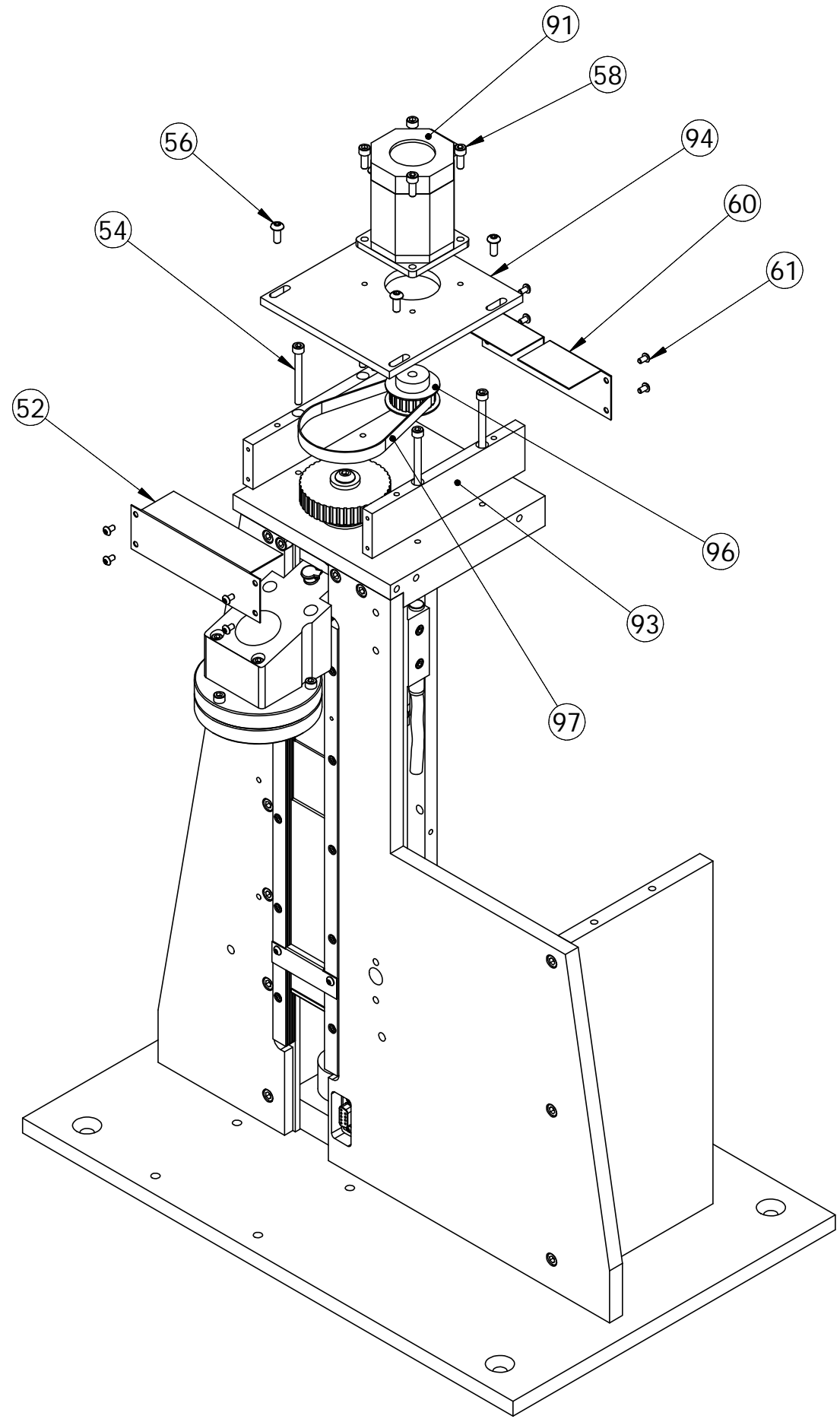


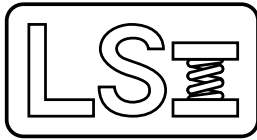
- NOTES:
 1. FINGER TIGHTEN ITEM 5 TO ITEM 26
 2. TORQUE ITEM 5 TO ITEM 9
 3. TORQUE ITEM 5 TO ITEM 26 & ITEM 12 TO ITEM 9
 4. GREASE ITEM 8. NOTICE ORIENTATION OF BEARING
 5. SHIM TO ACHIEVE .035/.045 FROM TOP SURFACE OF ITEM 95 TO TOP END OF ITEM 18 BEFORE TIGHTENING ITEM 39
 6. FASTEN ITEM 39, TORQUE 10 FT/LB



- NOTES:
 1. NOTICE ORIENTATION OF CONNECTOR, ITEM 41
 2. APPLY LOCKTITE 242 TO ITEM 40, TIGHTENING, THEN LOOSEN 1/2 TURN







025-0000-0174-10

Frame Assembly, 11 200 lb

Parts List

Rev	By	Date	Description
	KMP	05-08-2007	

Item	Qty	Part Number	Rev	Part Name	PCB Location	Part Length
1	1	018-0000-0176-04	Z	Base Plate		in.
2	1	018-0000-0171-02	N	LEFT SUPPORT, UT		in.
3	1	018-0000-0339-03	W	Right Support UT		in.
4	1	018-0000-0887-00	F	LEFT BACK SUPPORT		in.
5	47	013-0000-0032-00		1/4-20 X 3/4 SHCS		in.
6	1	013-2000-0104-00		Lock Nut		in.
7	1	013-2000-0105-00		Lock Washer		in.
8	3	013-2000-0090-00	A	Angular Contact Bearing		in.
9	1	018-0000-2055-00	D	UT Bearing Block		in.
10	1	018-0000-1009-00	E	Upper Platform, 5/16-18		in.
11	1	018-0000-0164-00	M	3.5" Upper Platform		in.
12	7	013-0000-0115-00		10-32 X 3/4 SHCS		in.
13	1	018-0000-2056-00	G	Upper Platform Mount		in.
14	4	018-0000-1732-03	B	10-32 Custom Screws for Platform Alignment		in.
15	1	013-1000-0025-00		CUP STYLE OIL HOLE COVER		in.
16	1	018-0000-2191-00	A	Ball Screw Wiper		in.
17	2	013-0000-0272-00		4-40 X 1/4 Socket Set Screw Cup Point		in.
18	1	013-5000-0134-00		Ball Screw / Nut, 25mmØ, UT 11		in.
19	2	013-2000-0230-00		Linear Bearing Block With 4 Hole Mount Screw From Bottom (ut)		in.
20	8	013-0000-0148-00		M4 X 14 mm SHCS		in.
21	14	013-0000-0188-00		M3-0.5 X 16 mm SHCS		in.
22	1	013-2000-0067-02		11" Linear Bearing Rail (15x460 mm)(UT)		in.
23	2	018-0000-2057-00	A	SCALE MOUNTING PLATE		in.
24	4	013-0000-0125-00		10-24 X 3/4 BHSCS		in.
25	Ref	025-1000-0243-08	M	ENCODER FOR FLASH 11, STD RESOLUTION		in.
26	1	018-0000-0880-00	H	Upper Platform Mount Support, UT 11		in.
27	2	013-0000-0295-00		8-32 X 7/8 SHCS		in.
28	1	018-0000-1016-00	A	CABLE GUARD		in.
29	AR	013-2000-0077-00		.005 Stainless Steel Shim Washer		in.
30	2	013-0000-0282-00		1/4-20 X 3/4 BHSCS		in.

Approved by:

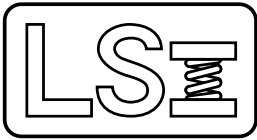
Date:

May 29, 2007

SEE ATTACHED 4 DRAWINGS

Printed on 08-23-2007, 3:11:07 PM by KMP

Page 5 of 7



025-0000-0174-10

Frame Assembly, 11 200 lb

Parts List

Rev	By	Date	Description
	KMP	05-08-2007	

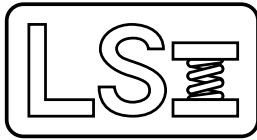
Item	Qty	Part Number	Rev	Part Name	PCB Location	Part Length
31	1	018-0000-2058-00	B	READER HEAD MOUNT		in.
32	4	013-0000-0181-00		8-32 X 1/2 SHCS		in.
33	1	013-1000-0012-00		1/4-28 Grease Fitting		in.
34	1	018-0000-2054-00	E	UT Top Support Plate		in.
35	6	013-2000-0203-00		Belville Washer, OD 1.326, ID .882		in.
37	1	018-0000-1327-02	C	Key 1/8 X 1/8 X .750		in.
38	1	013-2000-0202-00		Thrust Washer		in.
39	1	013-0000-0114-00		5/16-18 X 3/4 BHSCS		in.
40	2	013-0000-0020-00		4-40 X 1/4 Button Head Cap Screw		in.
41	Ref	025-1000-0304-01	D	Smart Cell Cable Assembly,FLASH		in.
47	8	013-0000-0097-00		10-32 X 1/2 BHSCS		in.
51	6	013-0000-0196-00		10-32 X 1/2 SHCS		in.
52	1	018-0000-1026-00	B	GEAR MOUNT END COVER		in.
54	4	013-0000-0074-00		10-32 X 1 3/4 SHCS		in.
56	24	013-0000-0026-00		10-24 X 1/2 BHSCS		in.
58	4	013-0000-0246-00		10-24 X 5/8 SHCS		in.
60	1	018-0000-1026-01	B	GEAR MOUNT END COVER		in.
61	12	013-0000-0077-00		6-32 X 1/4 Button Head Cap Screw		in.
63	1	013-0000-0291-00		4-40 X 3/4 SHCS		in.
64	1	018-0000-2072-00	B	LATCH RELEASE KNOB		in.
65	2	013-0000-0318-00		5/16-18 X 5/16 FTDT SSS Self Locking		in.
66	2	013-0000-0319-00		SPRING .240Ø x .500		in.
67	2	018-0000-2063-00	A	LATCH PIN		in.
68	2	018-0000-2069-00	C	Latch Spacer		in.
69	2	018-0000-2060-01		Shield Latch		in.
70	1	018-0000-2059-00	C	UT 11 Shield		in.
71	1	018-0000-2062-00	D	Latch Release		in.
72	29	013-0000-0028-00		8-32 X 1/4 BHSCS		in.
73	1	018-0000-2065-00	A	Hinge		in.
74	1	018-0000-2064-00	A	HINGE MOUNT		in.

Approved by:

Date:

May 29, 2007

SEE ATTACHED 4 DRAWINGS



025-0000-0174-10

Frame Assembly, 11 200 lb

Parts List

Rev	By	Date	Description
	KMP	05-08-2007	

Item	Qty	Part Number	Rev	Part Name	PCB Location	Part Length
75	2	013-0000-0029-00		8-32 X 1/2 Button Head Cap Screw		in.
76	2	018-0000-2061-00	B	Shield Pin		in.
77	Ref	025-1000-0395-00	A	Cable UT Door Interlock Switch		in.
78	2	013-2000-0131-00		#4 FLAT WASHER		in.
79	2	013-0000-0018-00		4-40 X 1/2 BHSCS		in.
80	1	018-0000-0175-02	E	Back Cover - UT 11		in.
83	1	018-0000-2717-01		Mount Guard, Flash 11 - 24		in.
84	1	018-0000-2717-02		Slide Guard, Flash 11 -24		in.
85	1	018-0000-2717-04	A	Guard Stop, Flash 11		in.
87	2	018-0000-2727-00		Guard Rail, Flash 11 - 24		in.
88	10	013-0000-0157-00		6-32 X 3/8 SHCS		in.
89	5	013-3000-0017-00		Cable Clamp, 3/8 Dia.		in.
90	1	018-0000-2728-00	A	Ball Screw Spacer, Flash 11 & 24		in.
91	Ref	025-1000-0173-03	P	200 lb UT Motor Assembly, UT11		in.
92	Ref	025-1000-0406-00	D	Motor Power / Drive Assembly (200 LB UNIT)(Flash)		in.
93	2	018-0000-1027-00	B	MOTOR STAND-OFF		in.
94	1	018-0000-1028-01	A	SMALL MOTOR MOUNTING PLATE		in.
95	1	018-0000-1029-04	H	Pulley (13-5-60), Steel Only(.596/.595ø)		in.
96	1	018-0000-1029-06	H	PULLEY(13-5-61) (.25Ø STK)		in.
97	1	013-5000-0031-00		Timing Belt - Positive Drive 110XL		in.

Approved by:

Date:

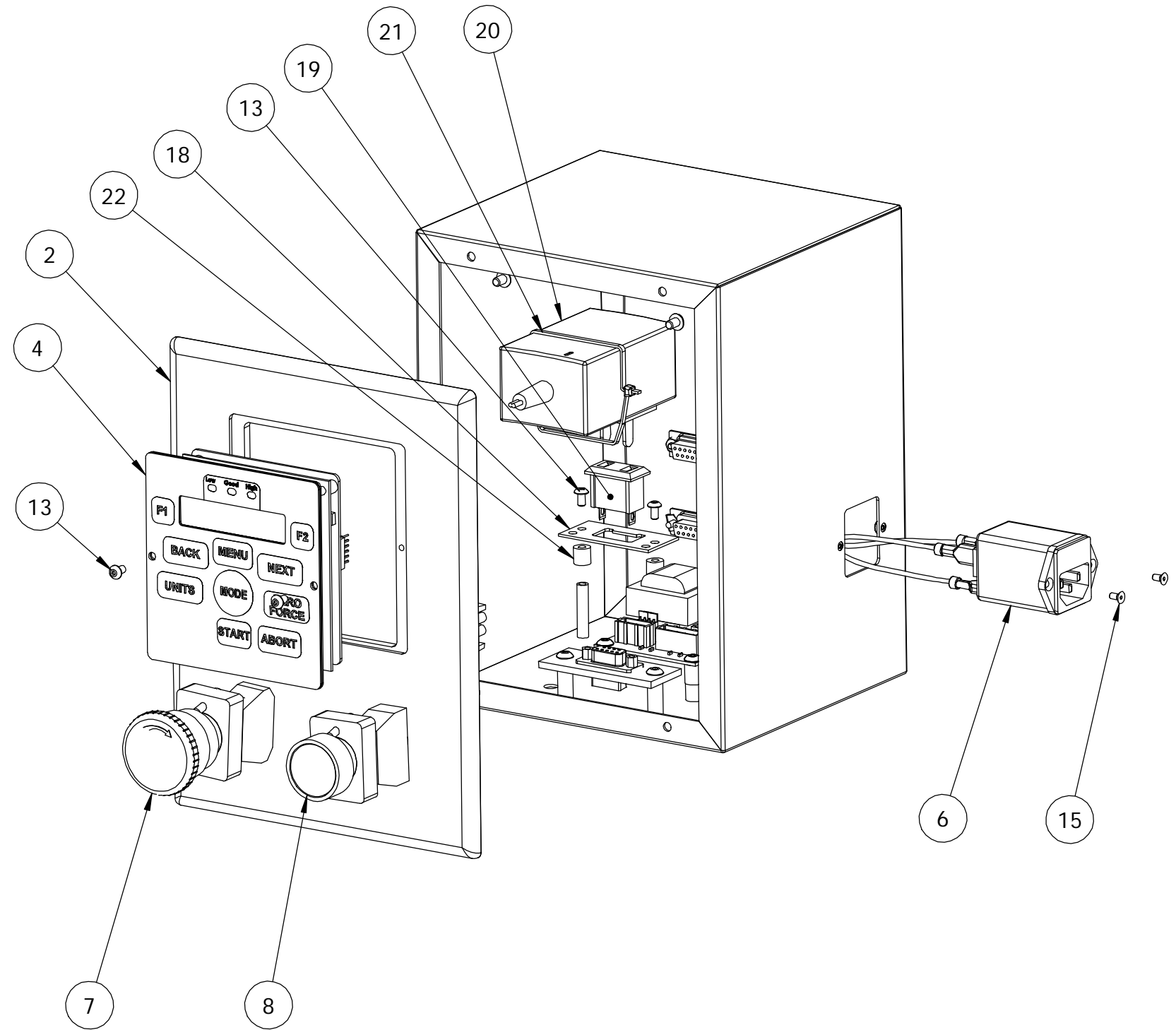
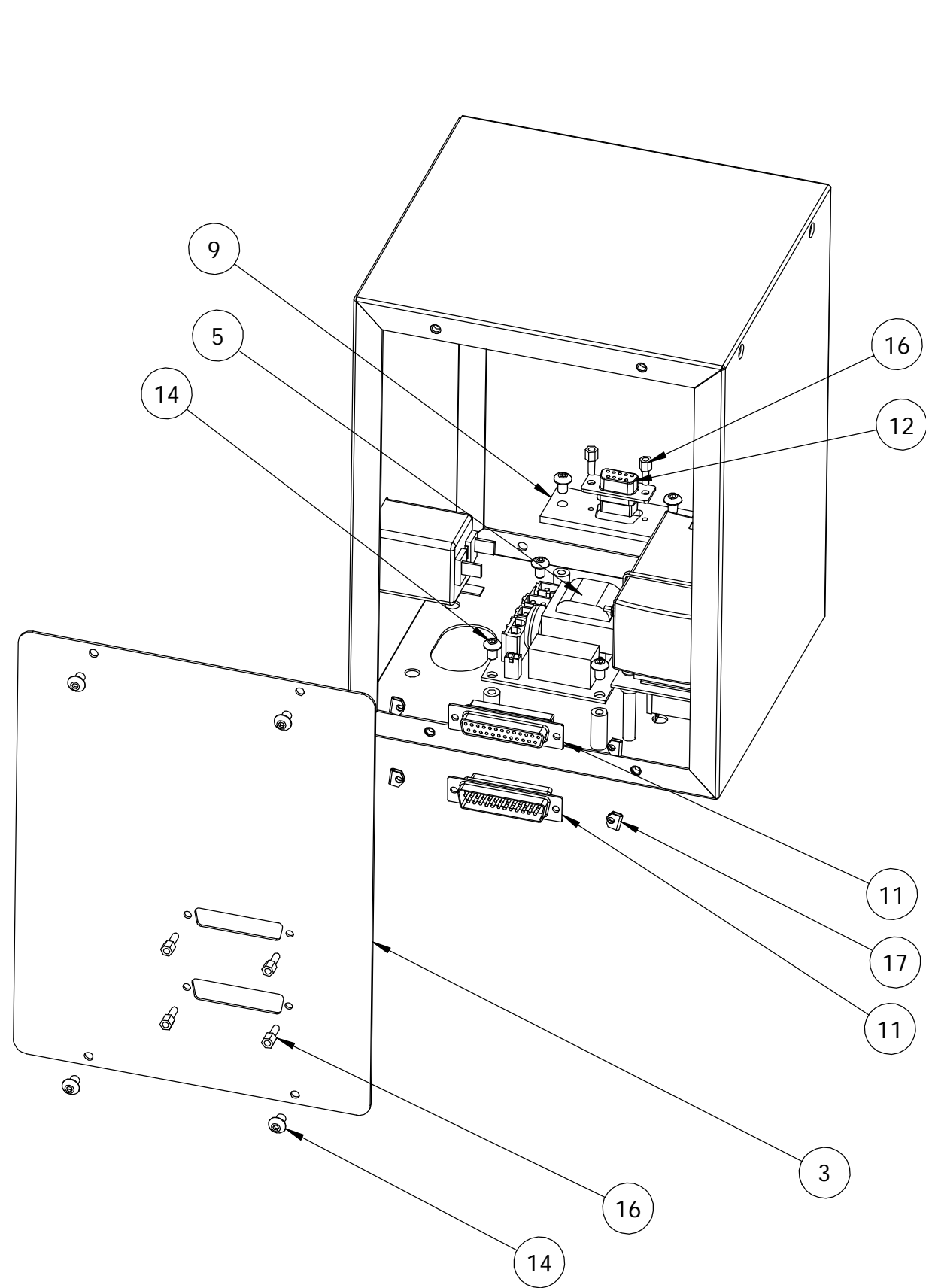
May 29, 2007


SEE ATTACHED 4 DRAWINGS

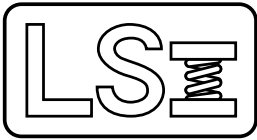
Printed on 08-23-2007, 3:11:07 PM by KMP

Page 7 of 7

REV	DATE	DESCRIPTION	DRW	APP
		SEE SHEET 2		



UNLESS OTHERWISE SPECIFIED DIMENSIONS ARE IN INCHES TOLERANCES ARE: .XX ± .01 .XXX ± .005		 LARSON SYSTEMS INC. 10073 Baltimore St. NE PH. 763-780-2131 Mpls., MN 55449 FAX. 763-780-2182	
MATERIAL -	APPROVALS		DATE
FINISH -	DRAWN KMP	10-2-06	Super Force Meter SDHT for Auto. Tester
HEAT TREAT	APP.		B DWG. NO. 025-0000-0342-07C
SCALE: NONE			SHEET 1 OF 2



025-0000-0342-07 C
Flashlite Computer Assembly

Parts List

Rev	By	Date	Description
	KMP	04-21-2006	
A	KMP	10-19-2006	Add Item 18, 19, 20
B	KMP	01-02-2007	Add Item 21 Change Item 11 025-1-0551-00 was 25-1-0287-00 and Delete Item 10,
C	KMP	02-26-2007	Change Items 6 was 25-1-0500-00, 7 was 25-1-0501-00, 8 was 25-1-0502-00, 12 was 9-0-0073-00, 13 was 13-0-0077-00, 20 was 25-1-0396-00. Add Item 22, 23

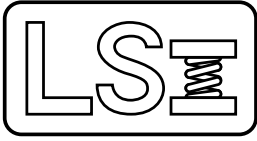
Item	Qty	Part Number	Rev	Part Name	PCB Location	Part Length
1	1	018-0000-2893-00	B	Enclosure, Automatic SDHT		in.
2	1	018-0000-2894-00	A	Computer Front Bezel, Automatic SDHT		in.
3	1	018-0000-2895-00		Enclosure back Panel, Automatic SDHT		in.
4	1	025-0000-0684-00		Front Panel Assembly , Flashlite		in.
5	Ref	025-1000-0540-00	A	AC DISTRIBUTION MODULE, FLASH & UT		in.
6	Ref	025-1000-0500-10	C	Power Entry 120V Cable, Flashlite		in.
6	Ref	025-1000-0500-11	C	Power Entry 230V Cable, Flashlite		in.
7	Ref	025-1000-0501-02	A	E-Stop Cable, FLASH		in.
8	Ref	025-1000-0502-02	C	ON Switch Cable FLASH		in.
9	1	018-0000-2865-00		Linear Encoder Bracket, Flash		in.
11	1	025-1000-0551-00		FLASHLITE Internal, RS232, Motor, Door, Automation Cable		in.
12	1	025-1000-0304-02	D	SMART CELL CABLE ASSEMBLY, SDHT		in.
13	4	013-0000-0021-00		6-32 X 5/8 BHSCS		in.
14	14	013-0000-0028-00		8-32 X 1/4 BHSCS		in.
15	2	013-0000-0015-00		4-40 X 1/4 FHSCS		in.
16	6	013-1000-0010-00		Female Screw Lock		in.
17	4	013-1000-0009-00		Mounting Clamp and Screw		in.
18	1	018-0000-2867-00	B	AC Power Adapter Bracket, Flash - SDHT		in.
19	1	008-2000-0016-00		POWER OUTLET, SCHURTER		in.
20	1	025-1000-0560-00		FLASHLIGHT Power Supply 100-240 VAC 50-60 Hz		in.
21	1	013-4000-0008-00		Cable Tie - .095 x 14.0" long		in.
22	1	012-0000-0011-00		Nylon spacer		in.
23	1	017-0000-0029-02	A	Emergency Stop / Power On / Warning Label		in.

Approved by:

Date:

March 9, 2007

SEE ATTACHED DRAWING



050-0000-0132-00 A
FLASH LITE 11 - 1,000 lb

Parts List

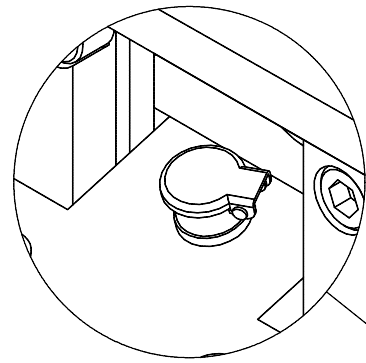
Rev	By	Date	Description
	KMP	10-02-2006	
A	DAL	07-19-2010	del 018-0000-2477-00, 013-0000-0231-00, add 059-0000-0060-00

Item	Qty	Part Number	Rev	Part Name	PCB Location	Part Length
1	1	025-0000-0174-00	U	Frame Assembly, 11 1,000 lb		in.
2	1	025-0000-0342-07	C	Flashlite Computer Assembly		in.
3	1	025-2000-0130-00	B	Electrical Schematic, FLASHLIGHT 11/24 Servo, 120/240 VAC		in.
4	1	060-1000-0087-00		User Manual - FLASH Lite		in.
5	1	060-2000-0024-00		Parts List - FLASH 11		in.
6	1	025-6000-0029-00	A	Sticker Assembly - FLASH LITE		in.
7	1	059-0000-0060-00		Shipping Crate for Flash 11		in.

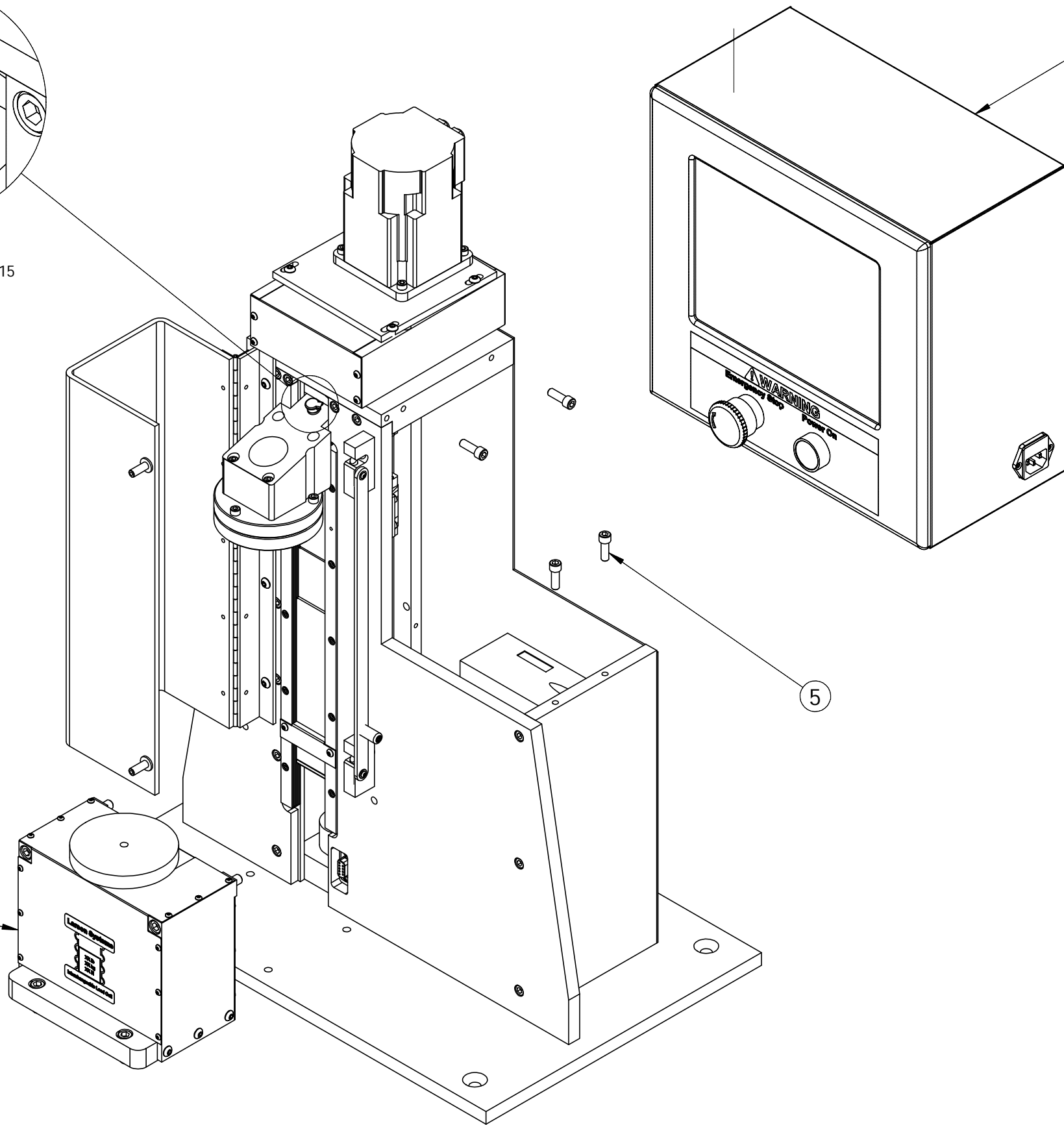
Approved by: 

Date: July 20, 2010

REV	DATE	DESCRIPTION	DRW	APP
.	.	SEE SHEET 5	.	.



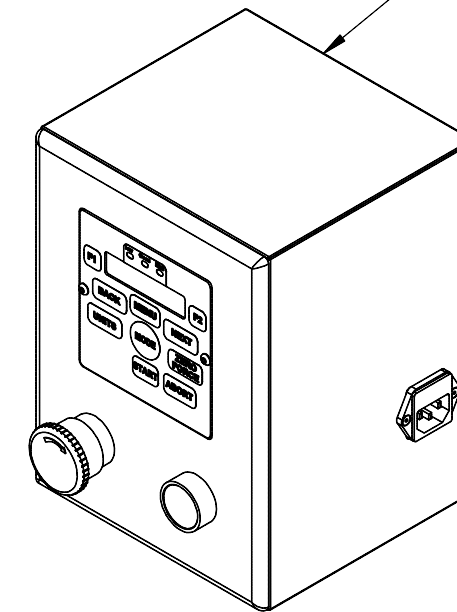
NOTES:
1. ADD OIL TO ITEM 15
AFTER ASSEMBLY



FLASH
REF. ONLY

FLASHLITE
REF. ONLY

LOAD CELL
REF. ONLY



UNLESS OTHERWISE SPECIFIED
DIMENSIONS ARE IN INCHES
TOLERANCES ARE:
.XX ± .01
.XXX ± .005



LARSON SYSTEMS INC.

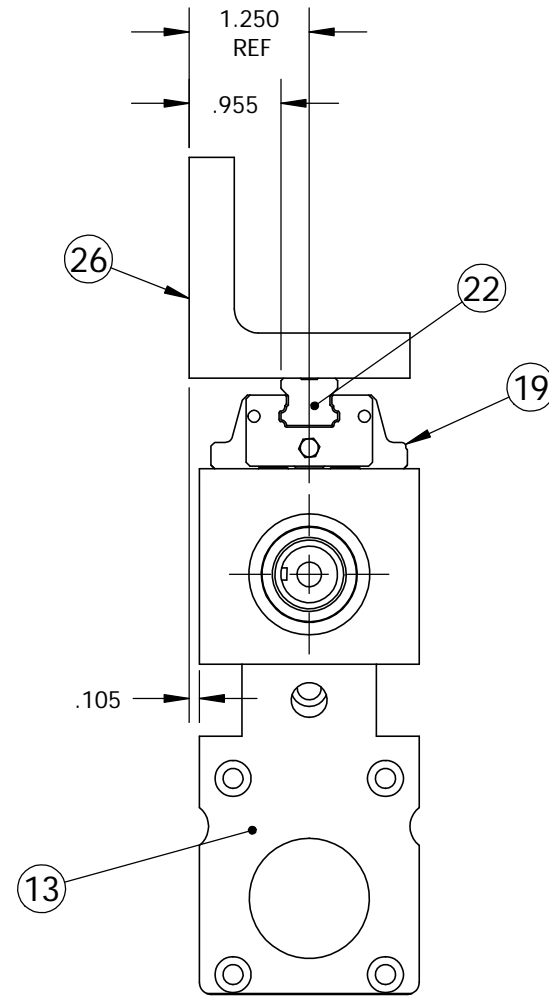
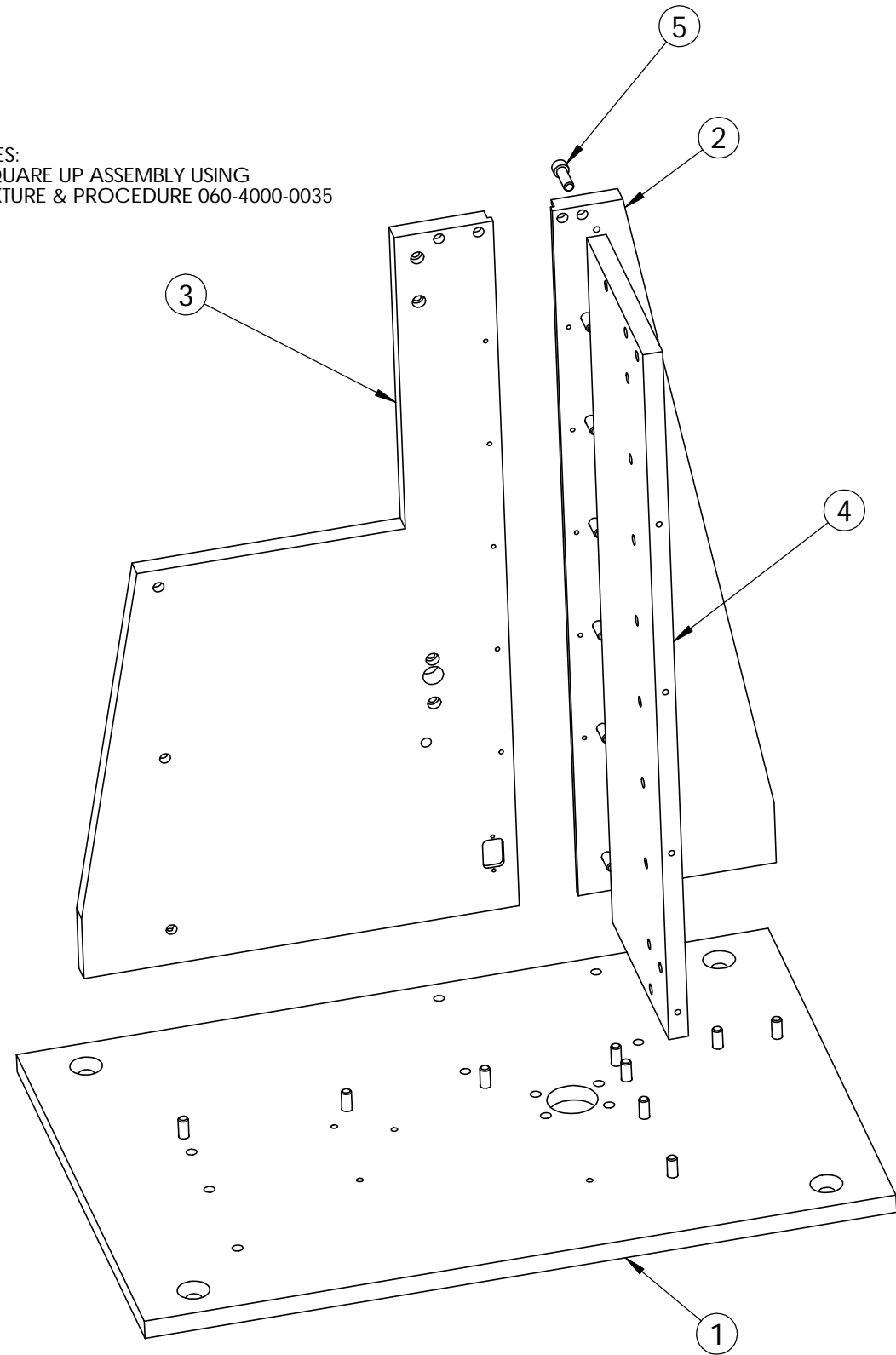
10073 Baltimore St. NE PH. 763-780-2131
Mpls., MN 55449 FAX. 763-780-2182

MATERIAL	-
FINISH	-
HEAT TREAT	-

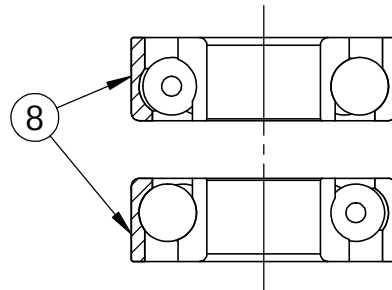
APPROVALS	DATE
DRAWN MEM	02-10-03
APPR.	
APPR.	

FRAME ASSEMBLY 11 1,000 lb	
DWG. NO.	025-0000-0174-00T
SCALE:	NONE

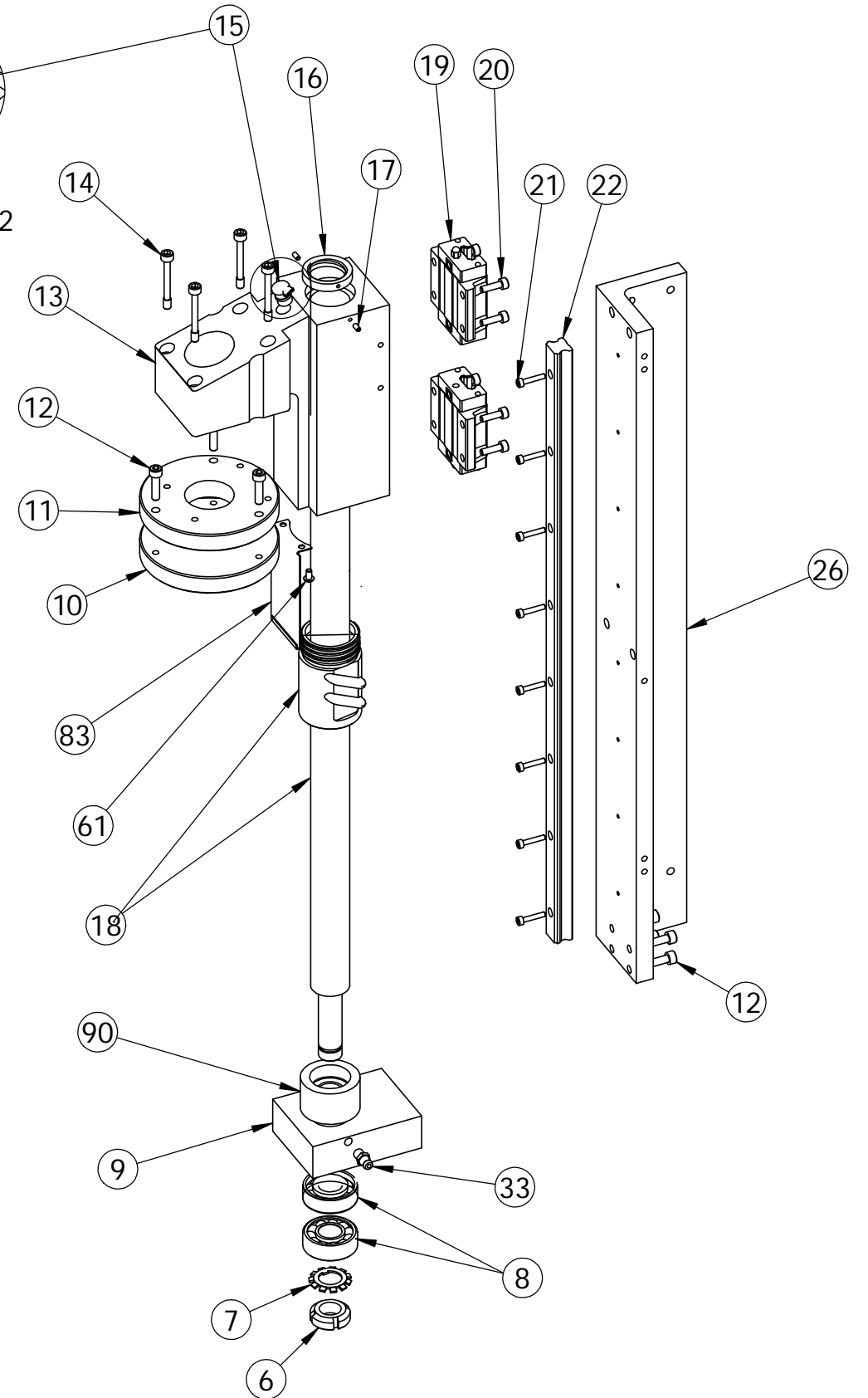
NOTES:
 1. SQUARE UP ASSEMBLY USING
 FIXTURE & PROCEDURE 060-4000-0035

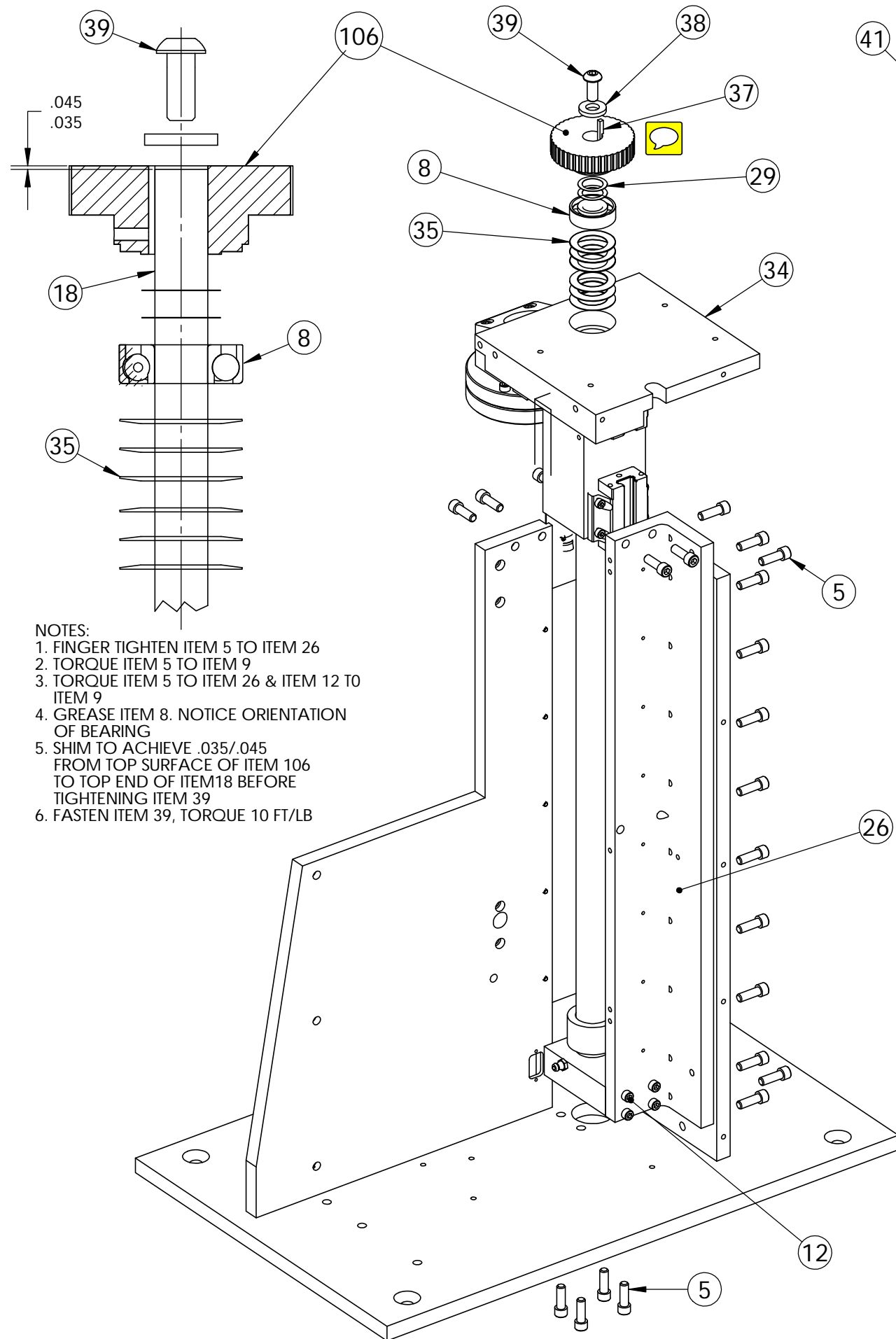


NOTES:
 1. ALIGN ITEMS 13, 22 & 26 TO ACHIEVE
 DIM .955 & .105
 2. GREASE ITEM 8
 3. NOTICE ORIENTATION OF BEARINGS,
 ITEM 8
 4. GREASE SURFACES OF ITEM 7 THEN
 FASTEN ITEM 6, TORQUE 40 FT/LB
 5. TIGHTEN FINGERTIGHT ITEM 9 TO 12
 6. TIGHTEN BALL NUT, ITEM 18 TO 40 FT/LB
 7. NOTICE ORIENTATION OF ITEM 15

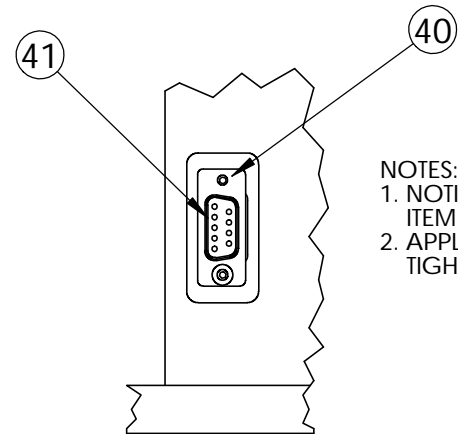


DETAIL
 SCALE 1 : 2

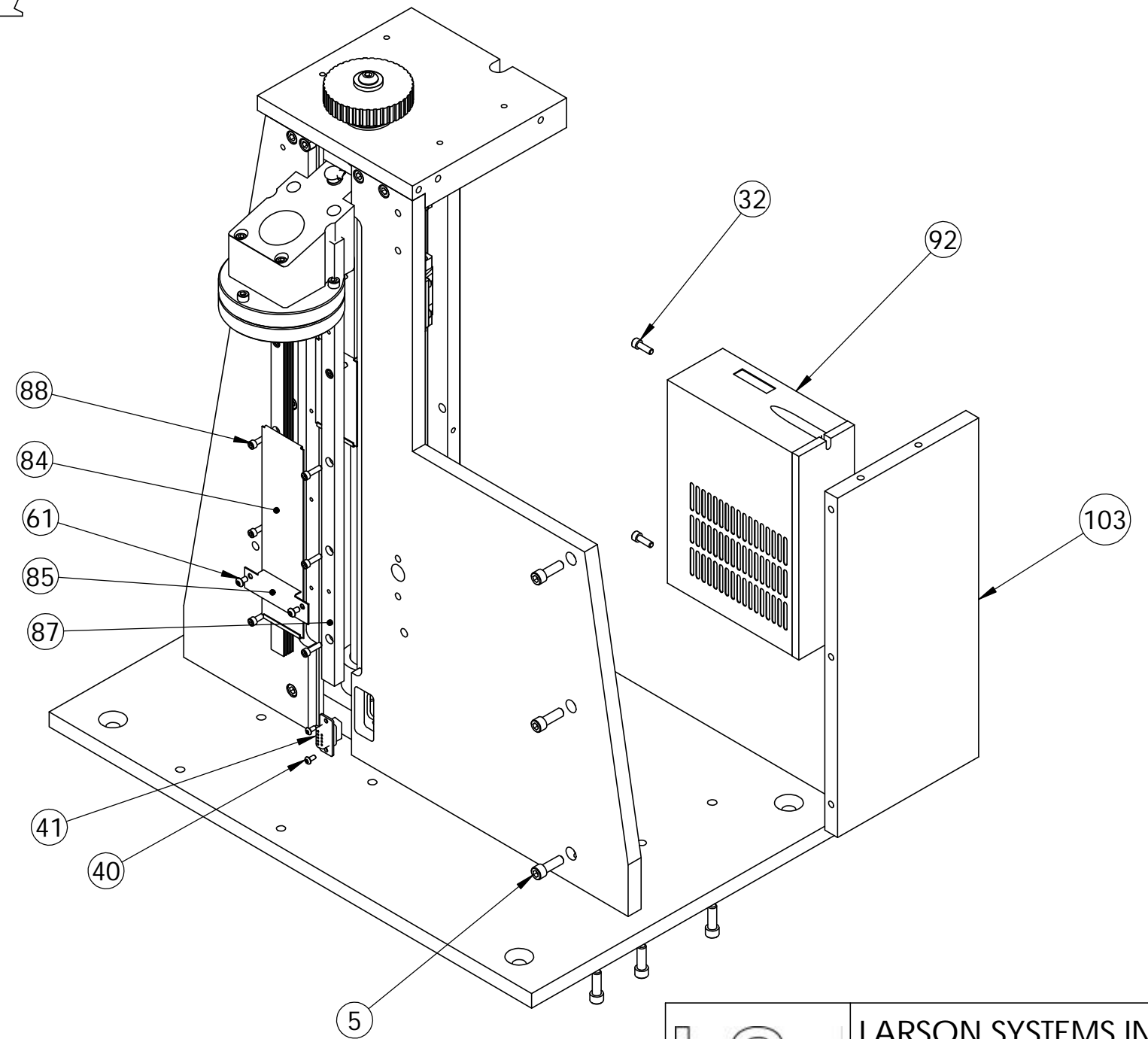




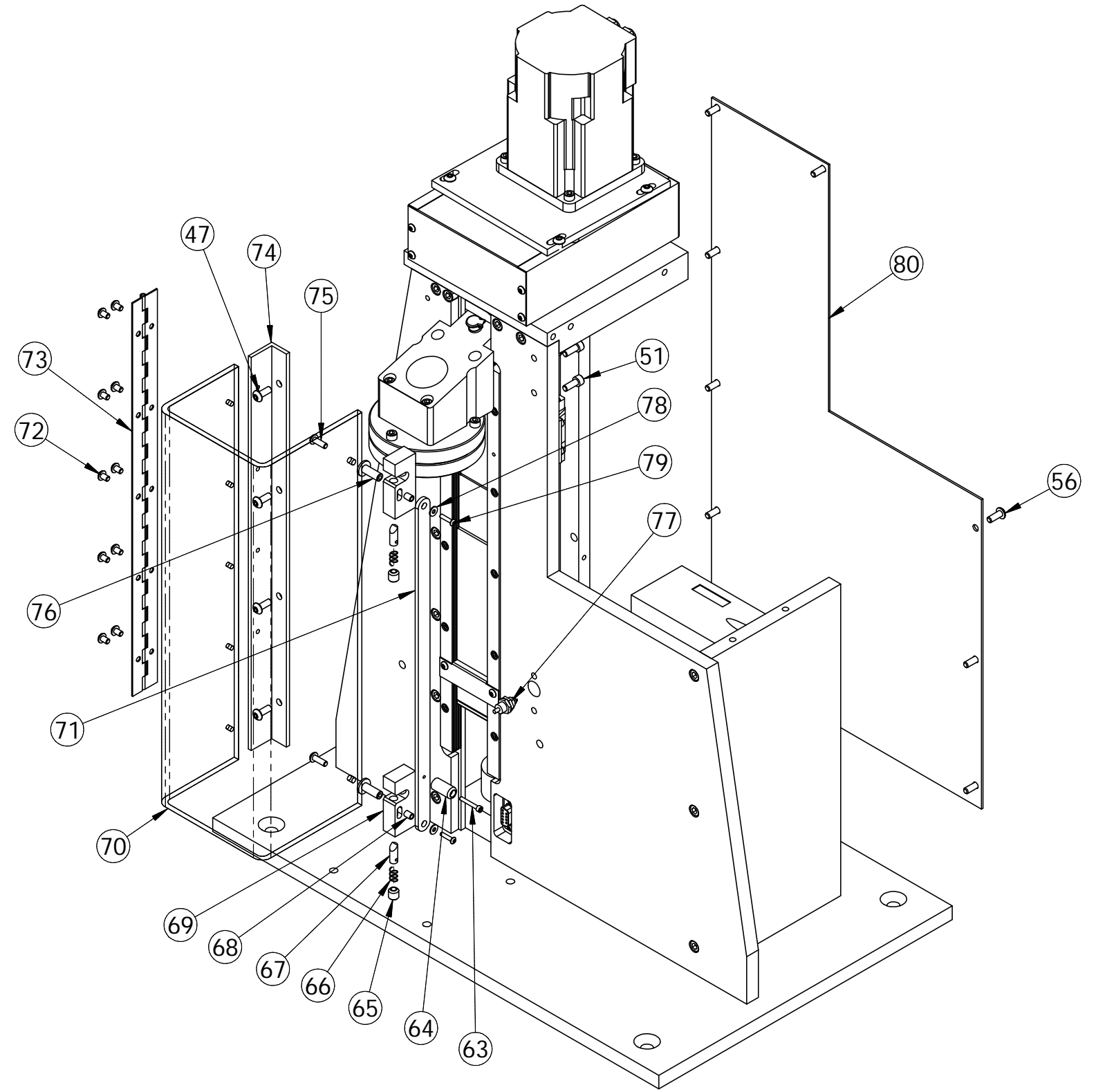
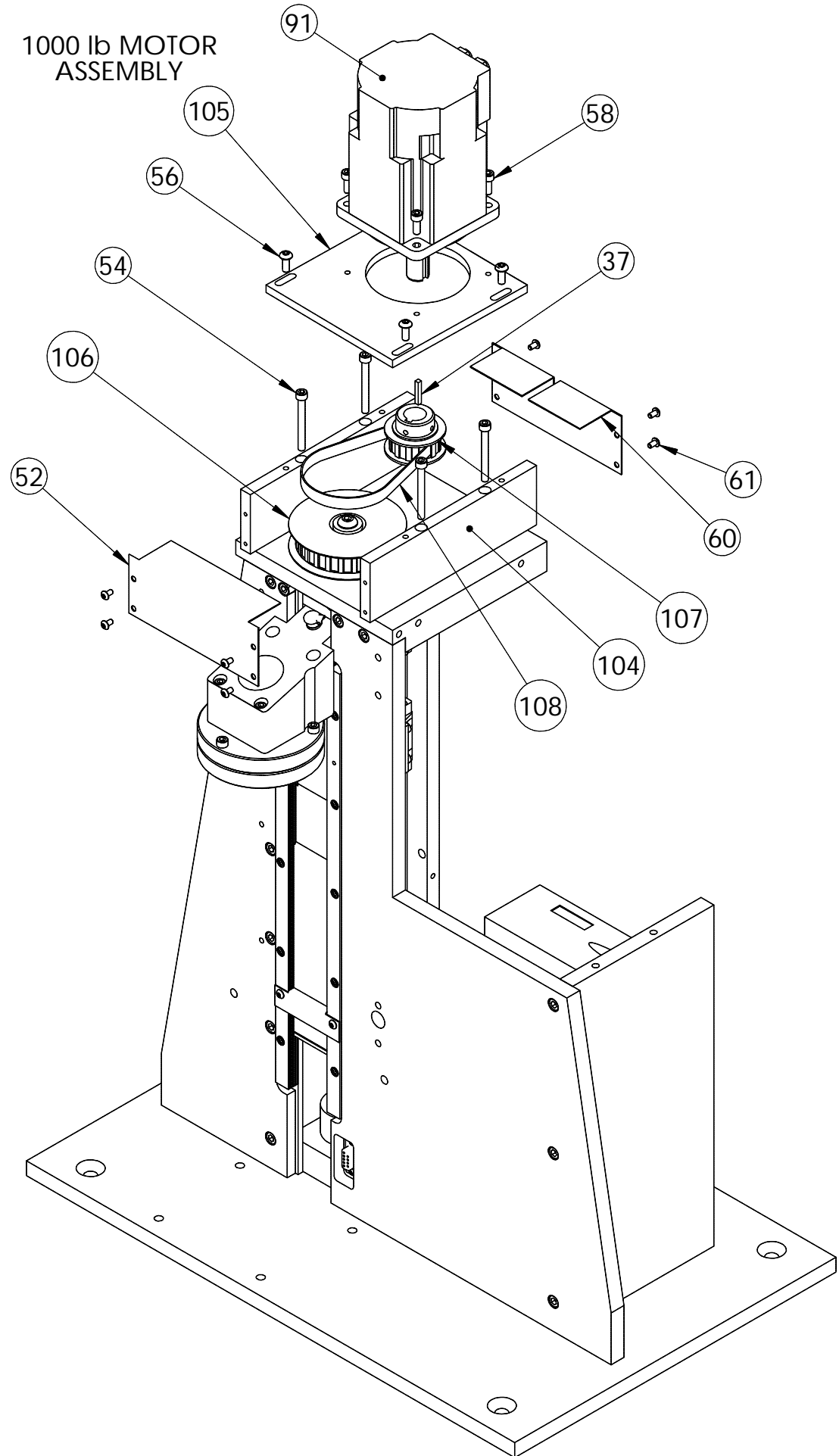
- NOTES:
 1. FINGER TIGHTEN ITEM 5 TO ITEM 26
 2. TORQUE ITEM 5 TO ITEM 9
 3. TORQUE ITEM 5 TO ITEM 26 & ITEM 12 TO ITEM 9
 4. GREASE ITEM 8. NOTICE ORIENTATION OF BEARING
 5. SHIM TO ACHIEVE .035/.045 FROM TOP SURFACE OF ITEM 106 TO TOP END OF ITEM 18 BEFORE TIGHTENING ITEM 39
 6. FASTEN ITEM 39, TORQUE 10 FT/LB

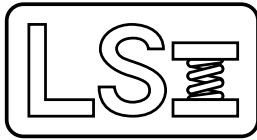


- NOTES:
 1. NOTICE ORIENTATION OF CONNECTOR, ITEM 41
 2. APPLY LOCKTITE 242 TO ITEM 40, TIGHTENING, THEN LOOSEN 1/2 TURN



1000 lb MOTOR
ASSEMBLY





025-0000-0174-00 T

Frame Assembly, 11 1,000 lb

Parts List

Rev	By	Date	Description
Q	KMP	05-17-2005	Added Item 89 Cable Clamp. change and Item 72 Qty 25 was 20. Change Item 45 to 025-1000-0406-00, -02 Power supply was 025-1000-0357-00, -01
R	KMP	05-16-2006	Change Item 41 25-1-304-01 was 25-1-0033-00, Item 42 25-1-0501-00 was 7-0-0035-00, Item 70 18-0-2059-00 was 18-0-2059-01 and Item 18-0-2062-00 was 18-0-2062-01. Delete Item 36, 44, 45, 53, 55, 57, 59, 62, 81. Add Item 90
S	KMP	09-15-2006	New Flash Computer, Delete Items 42, 43, 49, 50, 82, 86, 100, 102. Item 61 was Qty 10 and Item 88 was 13-0-0084-00,
T	KMP	05-10-2007	Update to New Servo Motor and Drive, move 200 lb Flash 11 onto 025-0-0174-10. Eliminate Linear Encoder delete Items 23, 24, 25, 27, 28, 30, 31, 51, 93, 94, 95, 96, 97, 98, 99, 101. Also Change Items 32 was 4, 52 was 18-0-1026-00,

Item	Qty	Part Number	Rev	Part Name	PCB Location	Part Length
1	1	018-0000-0176-04	Z	Base Plate		in.
2	1	018-0000-0171-02	N	LEFT SUPPORT, UT		in.
3	1	018-0000-0339-03	W	Right Support UT		in.
4	1	018-0000-0887-00	F	LEFT BACK SUPPORT		in.
5	47	013-0000-0032-00		1/4-20 X 3/4 SHCS		in.
6	1	013-2000-0104-00		Lock Nut		in.
7	1	013-2000-0105-00		Lock Washer		in.
8	3	013-2000-0090-00	A	Angular Contact Bearing		in.
9	1	018-0000-2055-00	D	UT Bearing Block		in.
10	1	018-0000-1009-00	E	Upper Platform, 5/16-18		in.
11	1	018-0000-0164-00	M	3.5" Upper Platform		in.
12	7	013-0000-0115-00		10-32 X 3/4 SHCS		in.
13	1	018-0000-2056-00	G	Upper Platform Mount		in.
14	4	018-0000-1732-03	B	10-32 Custom Screws for Platform Alignment		in.
15	1	013-1000-0025-00		CUP STYLE OIL HOLE COVER		in.
16	1	018-0000-2191-00	A	Ball Screw Wiper		in.
17	2	013-0000-0272-00		4-40 X 1/4 Socket Set Screw Cup Point		in.
18	1	013-5000-0134-00		Ball Screw / Nut, 25mmØ, UT 11		in.
19	2	013-2000-0230-00		Linear Bearing Block With 4 Hole Mount Screw From Bottom (ut)		in.
20	8	013-0000-0148-00		M4 X 14 mm SHCS		in.
21	14	013-0000-0188-00		M3-0.5 X 16 mm SHCS		in.
22	1	013-2000-0067-02		11" Linear Bearing Rail (15x460 mm)(UT)		in.
26	1	018-0000-0880-00	H	Upper Platform Mount Support, UT 11		in.
29	AR	013-2000-0077-00		.005 Stainless Steel Shim Washer		in.
32	2	013-0000-0181-00		8-32 X 1/2 SHCS		in.
33	1	013-1000-0012-00		1/4-28 Grease Fitting		in.
34	1	018-0000-2054-00	E	UT Top Support Plate		in.
35	6	013-2000-0203-00		Belville Washer, OD 1.326, ID .882		in.
37	1	018-0000-1327-02	C	Key 1/8 X 1/8 X .750		in.
38	1	013-2000-0202-00		Thrust Washer		in.

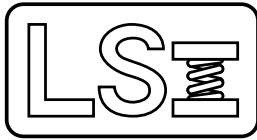
Approved by: 

Date: May 24, 2007

SEE ATTACHED 4 DRAWINGS

Printed on 05-24-2007, 2:02:48 PM by DAL

Page 5 of 7



025-0000-0174-00 T
Frame Assembly, 11 1,000 lb

Parts List

Rev	By	Date	Description
Q	KMP	05-17-2005	Added Item 89 Cable Clamp. change and Item 72 Qty 25 was 20. Change Item 45 to 025-1000-0406-00, -02 Power supply was 025-1000-0357-00, -01
R	KMP	05-16-2006	Change Item 41 25-1-304-01 was 25-1-0033-00, Item 42 25-1-0501-00 was 7-0-0035-00, Item 70 18-0-2059-00 was 18-0-2059-01 and Item 18-0-2062-00 was 18-0-2062-01. Delete Item 36, 44, 45, 53, 55, 57, 59, 62, 81. Add Item 90
S	KMP	09-15-2006	New Flash Computer, Delete Items 42, 43, 49, 50, 82, 86, 100, 102. Item 61 was Qty 10 and Item 88 was 13-0-0084-00,
T	KMP	05-10-2007	Update to New Servo Motor and Drive, move 200 lb Flash 11 onto 025-0-0174-10. Eliminate Linear Encoder delete Items 23, 24, 25, 27, 28, 30, 31, 51, 93, 94, 95, 96, 97, 98, 99, 101. Also Change Items 32 was 4, 52 was 18-0-1026-00,

Item	Qty	Part Number	Rev	Part Name	PCB Location	Part Length
39	1	013-0000-0114-00		5/16-18 X 3/4 BHSCS		in.
40	2	013-0000-0020-00		4-40 X 1/4 Button Head Cap Screw		in.
41	Ref	025-1000-0304-01	D	Smart Cell Cable Assembly,FLASH		in.
47	8	013-0000-0097-00		10-32 X 1/2 BHSCS		in.
52	1	018-0000-1026-04		GEAR MOUNT FRONT END COVER, Flash 11- 24 1,000 lb		in.
54	4	013-0000-0074-00		10-32 X 1 3/4 SHCS		in.
56	24	013-0000-0026-00		10-24 X 1/2 BHSCS		in.
58	4	013-0000-0246-00		10-24 X 5/8 SHCS		in.
60	1	018-0000-1026-03		GEAR MOUNT END COVER, Flash 11- 24 1,000 lb		in.
61	12	013-0000-0077-00		6-32 X 1/4 Button Head Cap Screw		in.
63	1	013-0000-0291-00		4-40 X 3/4 SHCS		in.
64	1	018-0000-2072-00	B	LATCH RELEASE KNOB		in.
65	2	013-0000-0318-00		5/16-18 X 5/16 FTDT SSS Self Locking		in.
66	2	013-0000-0319-00		SPRING .240Ø x .500		in.
67	2	018-0000-2063-00	A	LATCH PIN		in.
68	2	018-0000-2069-00	C	Latch Spacer		in.
69	2	018-0000-2060-01		Shield Latch		in.
70	1	018-0000-2059-00	C	UT 11 Shield		in.
71	1	018-0000-2062-00	D	Latch Release		in.
72	29	013-0000-0028-00		8-32 X 1/4 BHSCS		in.
73	1	018-0000-2065-00	A	Hinge		in.
74	1	018-0000-2064-00	A	HINGE MOUNT		in.
75	2	013-0000-0029-00		8-32 X 1/2 Button Head Cap Screw		in.
76	2	018-0000-2061-00	B	Shield Pin		in.
77	Ref	025-1000-0395-00	A	Cable UT Door Interlock Switch		in.
78	2	013-2000-0131-00		#4 FLAT WASHER		in.
79	2	013-0000-0018-00		4-40 X 1/2 BHSCS		in.
80	1	018-0000-0175-02	E	Back Cover - UT 11		in.
83	1	018-0000-2717-01		Mount Guard, Flash 11 - 24		in.
84	1	018-0000-2717-02		Slide Guard, Flash 11 -24		in.

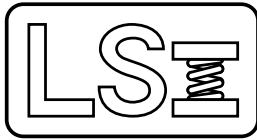
Approved by: 

Date: May 24, 2007

SEE ATTACHED 4 DRAWINGS

Printed on 05-24-2007, 2:02:48 PM by DAL

Page 6 of 7



025-0000-0174-00 T
Frame Assembly, 11 1,000 lb

Parts List

Rev	By	Date	Description
Q	KMP	05-17-2005	Added Item 89 Cable Clamp. change and Item 72 Qty 25 was 20. Change Item 45 to 025-1000-0406-00, -02 Power supply was 025-1000-0357-00, -01
R	KMP	05-16-2006	Change Item 41 25-1-304-01 was 25-1-0033-00, Item 42 25-1-0501-00 was 7-0-0035-00, Item 70 18-0-2059-00 was 18-0-2059-01 and Item 18-0-2062-00 was 18-0-2062-01. Delete Item 36, 44, 45, 53, 55, 57, 59, 62, 81. Add Item 90
S	KMP	09-15-2006	New Flash Computer, Delete Items 42, 43, 49, 50, 82, 86, 100, 102. Item 61 was Qty 10 and Item 88 was 13-0-0084-00,
T	KMP	05-10-2007	Update to New Servo Motor and Drive, move 200 lb Flash 11 onto 025-0-0174-10. Eliminate Linear Encoder delete Items 23, 24, 25, 27, 28, 30, 31, 51, 93, 94, 95, 96, 97, 98, 99, 101. Also Change Items 32 was 4, 52 was 18-0-1026-00,

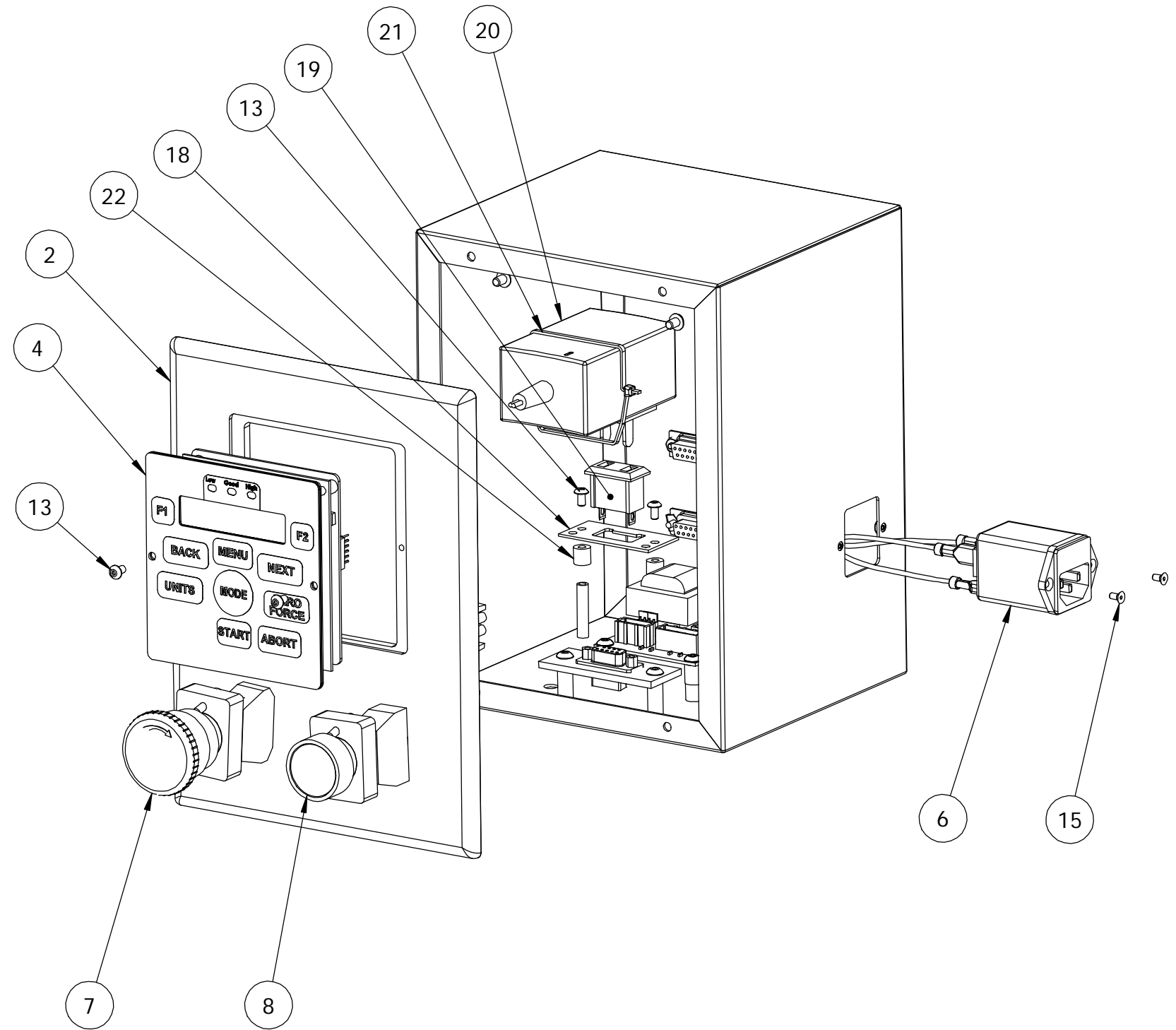
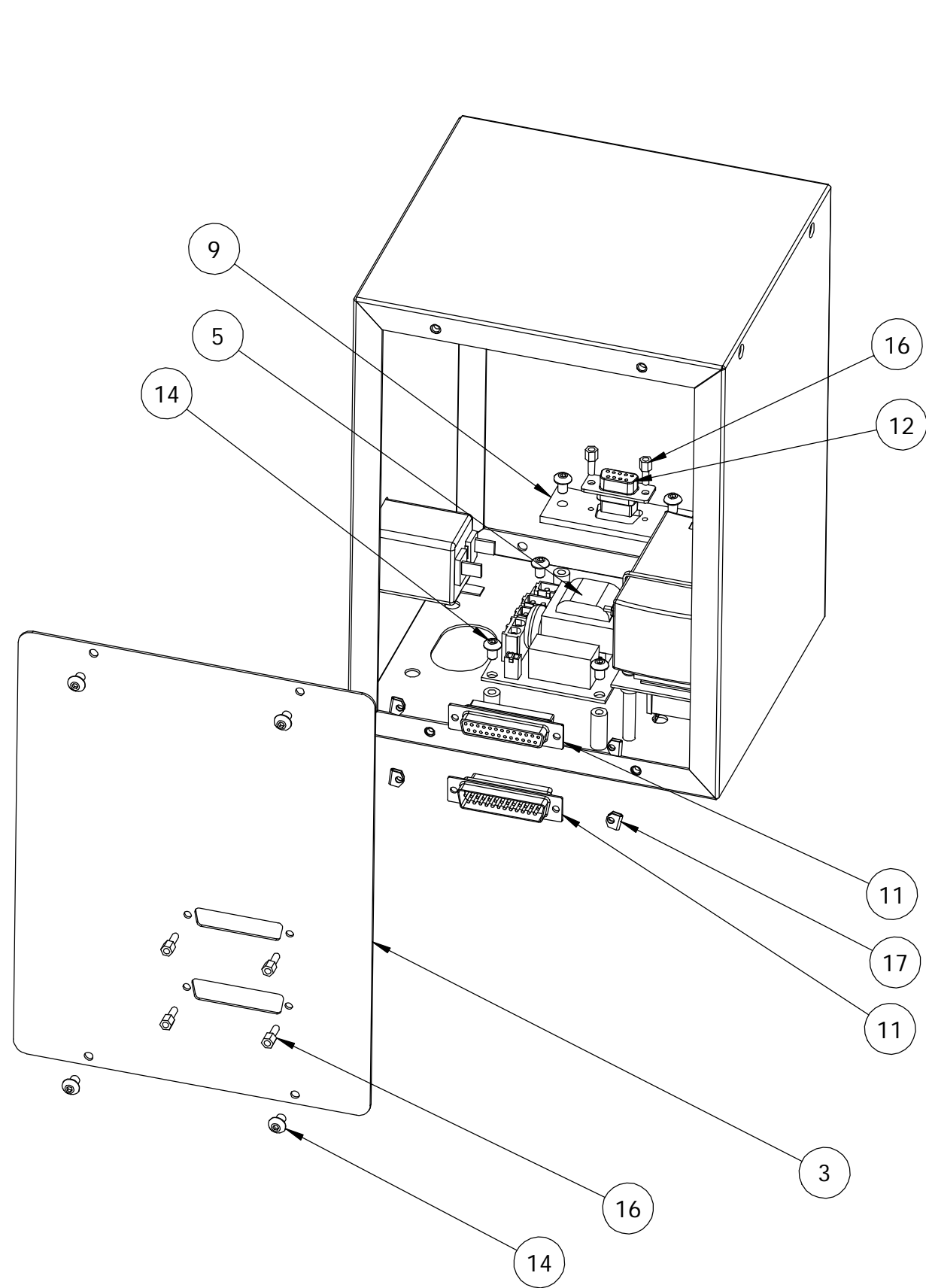
Item	Qty	Part Number	Rev	Part Name	PCB Location	Part Length
85	1	018-0000-2717-04	A	Guard Stop, Flash 11		in.
87	2	018-0000-2727-00		Guard Rail, Flash 11 - 24		in.
88	10	013-0000-0157-00		6-32 X 3/8 SHCS		in.
89	5	013-3000-0017-00		Cable Clamp, 3/8 Dia.		in.
90	1	018-0000-2728-00	A	Ball Screw Spacer, Flash 11 & 24		in.
91	Ref	014-2000-0028-00		AKM41 SERVO MOTOR		in.
92	Ref	011-3000-0018-00		S200 SERVO MOTOR DRIVE, 3 AMP LIMIT		in.
103	1	018-0000-0173-05		Right Back Support, Flash		in.
104	1	018-0000-1027-01	A	Motor Stand-off (2000 Lb Motor)		in.
105	1	018-0000-1028-00	B	MOTOR MOUNTING PLATE		in.
106	1	018-0000-1029-08	H	Pulley(13-5-149)(ø.596/.595) 1000 LB Pulley		in.
107	1	018-0000-1029-09	H	Pulley(13-5-150)(.626/.625) 1000LB Motor pulley		in.
108	1	013-5000-0148-00		Timing Belt 33 Th		in.

Approved by: 

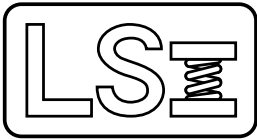
Date: May 24, 2007

SEE ATTACHED 4 DRAWINGS

REV	DATE	DESCRIPTION	DRW	APP
		SEE SHEET 2		



UNLESS OTHERWISE SPECIFIED DIMENSIONS ARE IN INCHES TOLERANCES ARE: .XX ± .01 .XXX ± .005		LS M	LARSON SYSTEMS INC. 10073 Baltimore St. NE PH. 763-780-2131 Mpls., MN 55449 FAX. 763-780-2182	
MATERIAL -	APPROVALS		DATE	Super Force Meter SDHT for Auto. Tester
FINISH -	DRAWN KMP	10-2-06	B	DWG. NO. 025-0000-0342-07C
HEAT TREAT	APP.		APP.	SCALE: NONE SHEET 1 OF 2



025-0000-0342-07 C
Flashlite Computer Assembly

Parts List

Rev	By	Date	Description
	KMP	04-21-2006	
A	KMP	10-19-2006	Add Item 18, 19, 20
B	KMP	01-02-2007	Add Item 21 Change Item 11 025-1-0551-00 was 25-1-0287-00 and Delete Item 10,
C	KMP	02-26-2007	Change Items 6 was 25-1-0500-00, 7 was 25-1-0501-00, 8 was 25-1-0502-00, 12 was 9-0-0073-00, 13 was 13-0-0077-00, 20 was 25-1-0396-00. Add Item 22, 23

Item	Qty	Part Number	Rev	Part Name	PCB Location	Part Length
1	1	018-0000-2893-00	B	Enclosure, Automatic SDHT		in.
2	1	018-0000-2894-00	A	Computer Front Bezel, Automatic SDHT		in.
3	1	018-0000-2895-00		Enclosure back Panel, Automatic SDHT		in.
4	1	025-0000-0684-00		Front Panel Assembly , Flashlite		in.
5	Ref	025-1000-0540-00	A	AC DISTRIBUTION MODULE, FLASH & UT		in.
6	Ref	025-1000-0500-10	C	Power Entry 120V Cable, Flashlite		in.
6	Ref	025-1000-0500-11	C	Power Entry 230V Cable, Flashlite		in.
7	Ref	025-1000-0501-02	A	E-Stop Cable, FLASH		in.
8	Ref	025-1000-0502-02	C	ON Switch Cable FLASH		in.
9	1	018-0000-2865-00		Linear Encoder Bracket, Flash		in.
11	1	025-1000-0551-00		FLASHLITE Internal, RS232, Motor, Door, Automation Cable		in.
12	1	025-1000-0304-02	D	SMART CELL CABLE ASSEMBLY, SDHT		in.
13	4	013-0000-0021-00		6-32 X 5/8 BHSCS		in.
14	14	013-0000-0028-00		8-32 X 1/4 BHSCS		in.
15	2	013-0000-0015-00		4-40 X 1/4 FHSCS		in.
16	6	013-1000-0010-00		Female Screw Lock		in.
17	4	013-1000-0009-00		Mounting Clamp and Screw		in.
18	1	018-0000-2867-00	B	AC Power Adapter Bracket, Flash - SDHT		in.
19	1	008-2000-0016-00		POWER OUTLET, SCHURTER		in.
20	1	025-1000-0560-00		FLASHLIGHT Power Supply 100-240 VAC 50-60 Hz		in.
21	1	013-4000-0008-00		Cable Tie - .095 x 14.0" long		in.
22	1	012-0000-0011-00		Nylon spacer		in.
23	1	017-0000-0029-02	A	Emergency Stop / Power On / Warning Label		in.

Approved by:

Date:

March 9, 2007

SEE ATTACHED DRAWING



Larson Systems Inc.
10073 Baltimore Street NE
Minneapolis, MN 55449-4425
www.larsonsystems.com

763-780-2131
1-877-780-2131
Fax: 763-780-2182
info@larsonsystems.com

