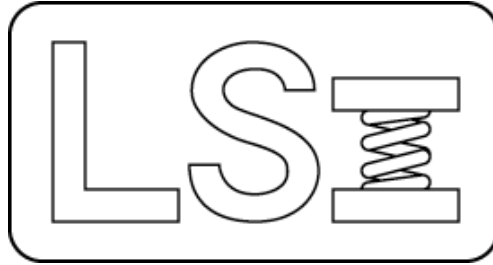


# *Larson Systems Inc.*



## *FLASH 36 Parts List*

*050-0000-0062-00 – 20,000 lb Whisper Drive*

*050-0000-0141-00 – 35,000 lb Whisper Drive*

*050-0000-0100-00 – 50,000 lb Whisper Drive*





# 050-0000-0062-00 C

# Parts List

## FLASH 36 - 20,000 lb (18" Ø x 36" tall)

Rev	By	Date	Description
	MW	10-08-1996	
A	DD		Updated list to new cables and schematics
B	DD		Added Ref. 25-1-277, 25-2-69 & 25-2-70
C	KMP	03-29-2006	Update to Flash system, Motor and Drive system. Change door to Left Swing. Remove 025-0-0023-12 UT Computer and 013-2-0090-03 Foam for UT

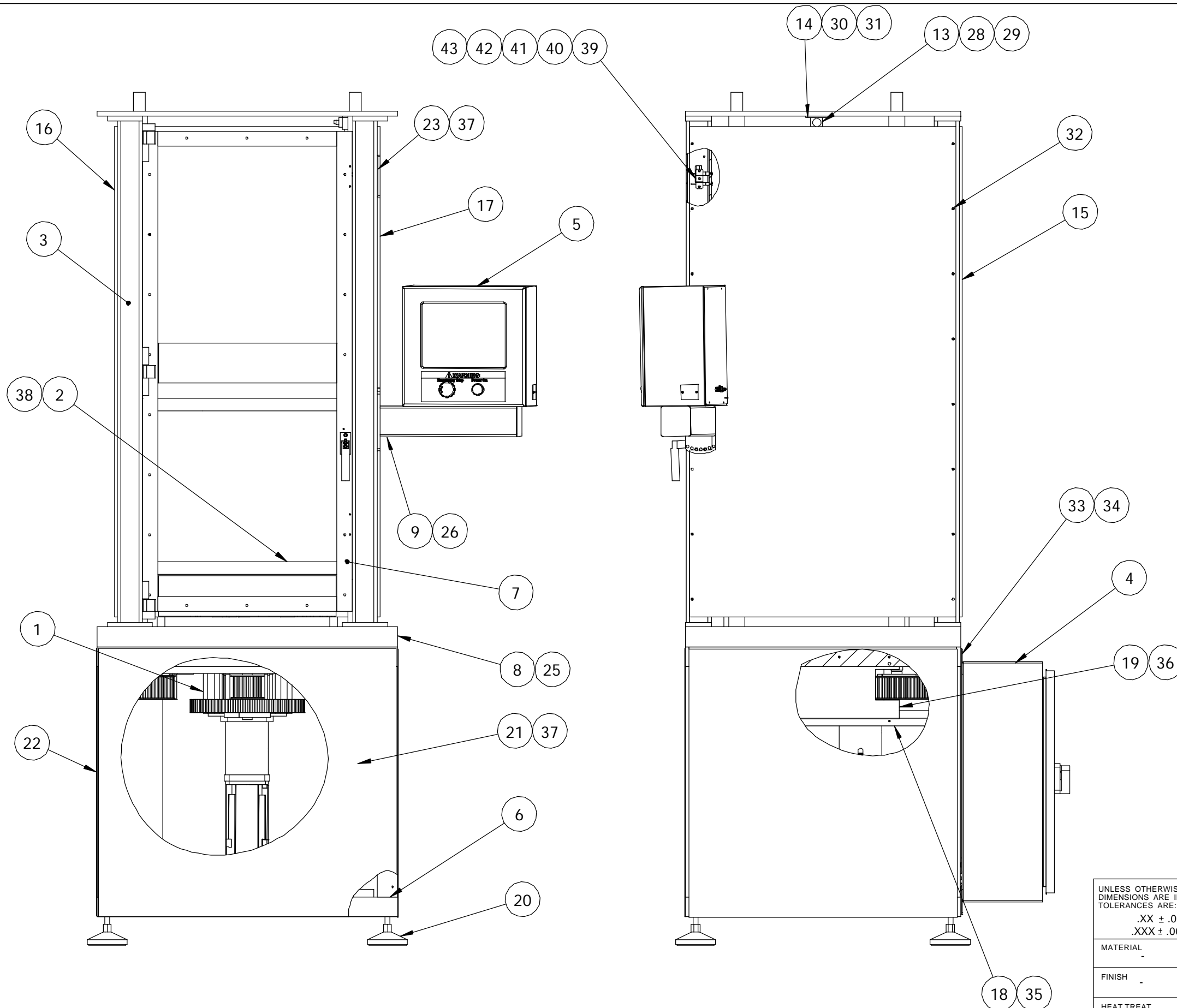
Item	Qty	Part Number	Rev	Part Name	PCB Location	Part Length
1	1	025-0000-0321-00	E	Main Assembly UT 36-20,000		in.
2	1	059-0000-0034-00		Shipping Crate - UT 36-20,000, 18" Plate		in.
3	1	060-1000-0029-00	Q	User Manual - FLASH 25 and FLASH 36		in.
4	1	025-2000-0090-03		SCHEMATIC, FLASH 36-20,000, 240VAC - 3PHASE		in.
5	1	025-6000-0017-01		Sticker Assembly - FLASH 36 20,000		in.
6	1	060-2000-0012-00		Parts List - UT 36 20,000 lb		in.

Renamed to FLASH 36 instead of UT 36. -MDL, 7-27-2006

Approved by: 

Date: January 2, 2007

REV	DATE	DESCRIPTION	DRW	APP
		SEE SHEET 3		



UNLESS OTHERWISE SPECIFIED  
DIMENSIONS ARE IN INCHES  
TOLERANCES ARE:  
.XX ± .01  
.XXX ± .005

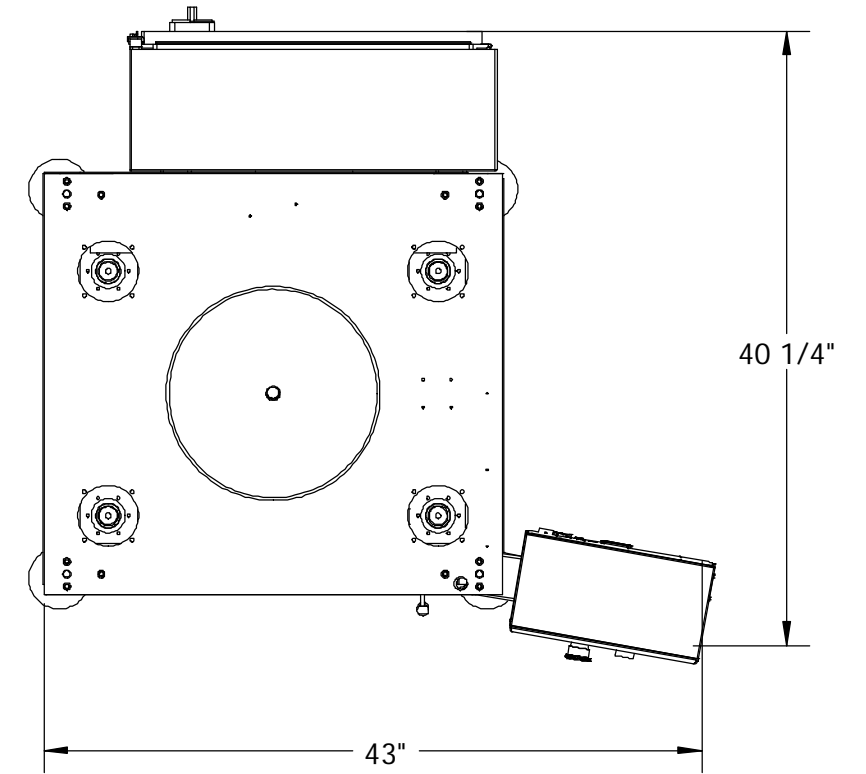
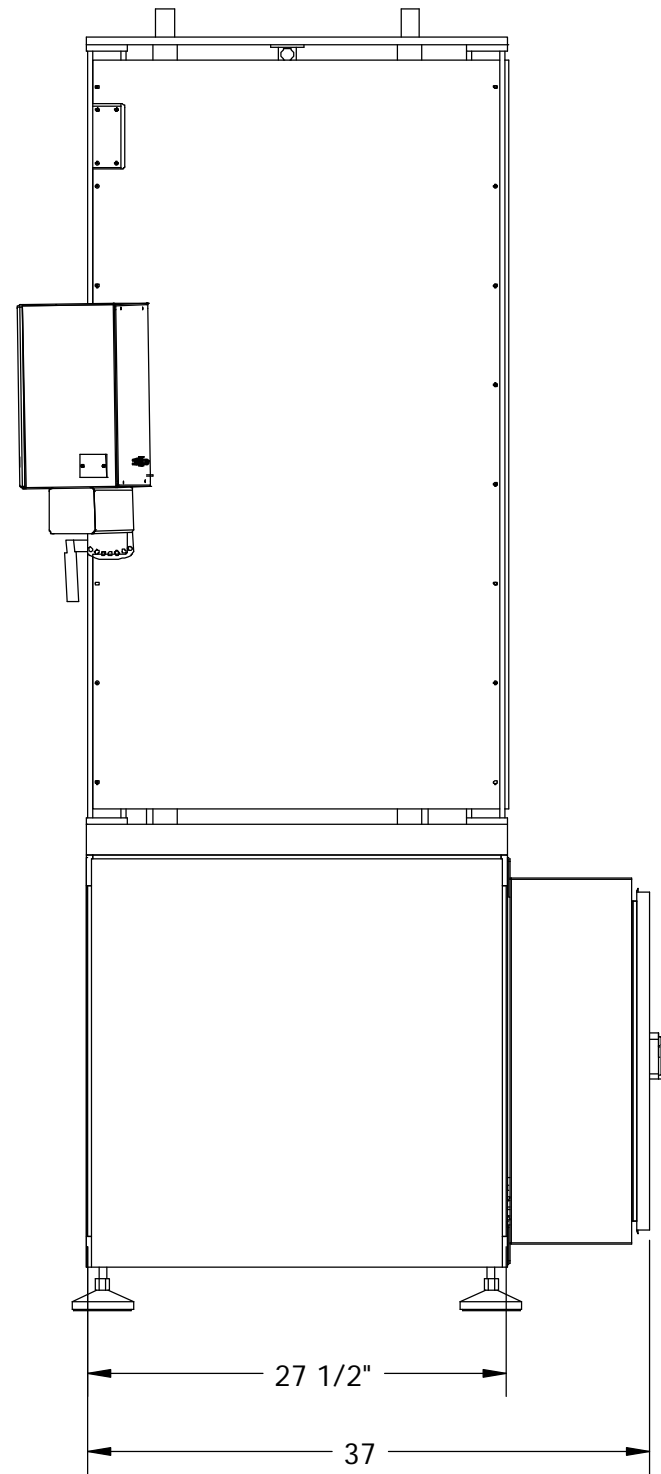
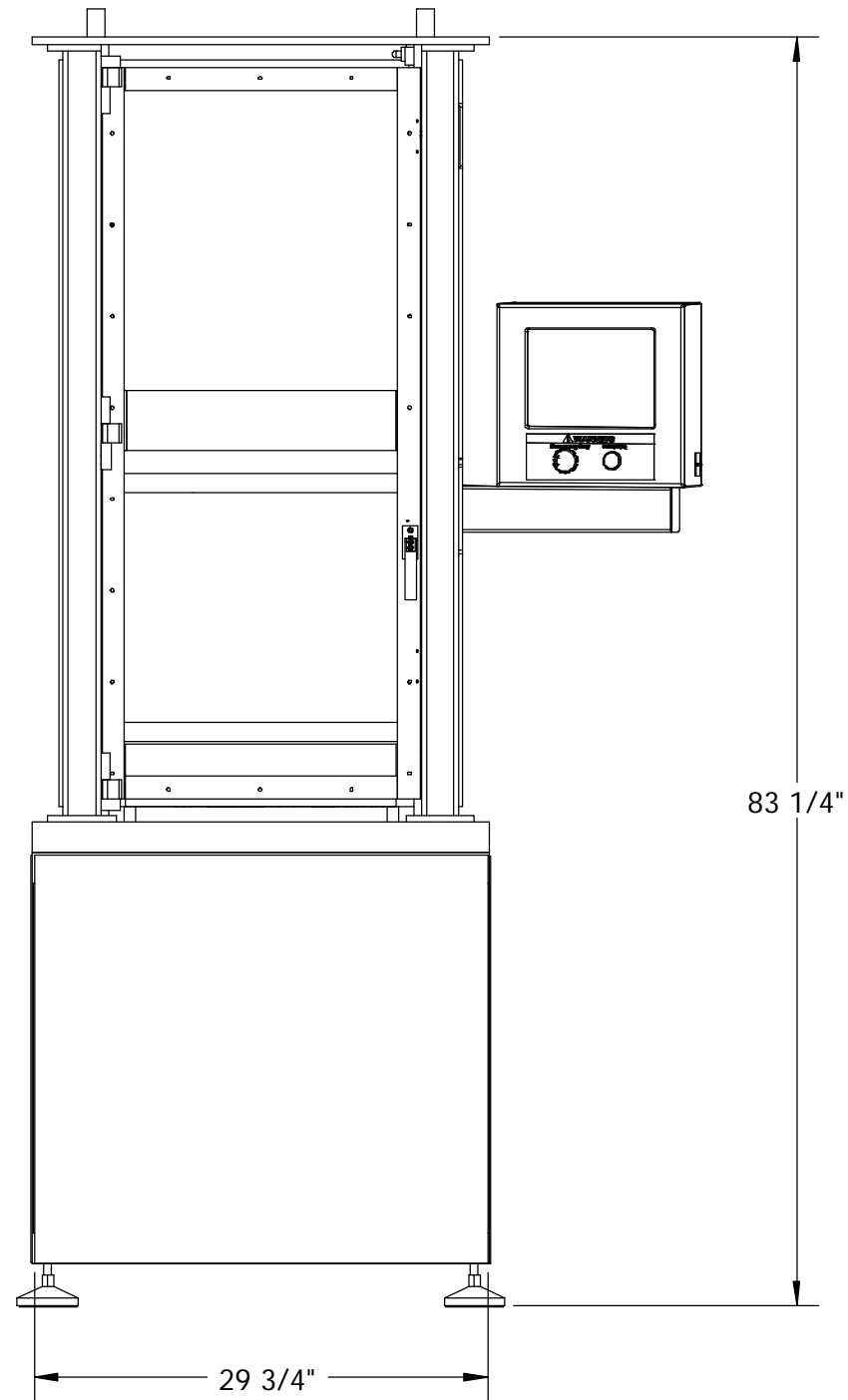


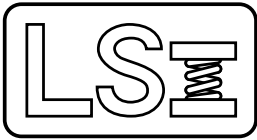
**LARSON SYSTEMS INC.**  
10073 Baltimore St. NE PH. 763-780-2131  
Mpls., MN 55449 FAX. 763-780-2182

MATERIAL	-
FINISH	-
HEAT TREAT	-

APPROVALS	DATE
DRAWN KMP	3-28-06
APP.	
APP.	

Main Assembly UT 36-20,000	
B	DWG. NO. 025-0000-0321-00E
SCALE: NONE	SHEET 1 OF 4





**025-0000-0321-00 E**  
Main Assembly UT 36-20,000

# Parts List

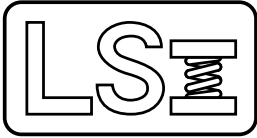
Rev	By	Date	Description
B	MH	01-17-1997	Added Item 31 (2), Item 27 qty was 16, pg. 2
C	DD	02-19-1997	item 27 qty was 18.
D	KMP	03-27-2006	Update to Flash system, Motor and Drive system. Change door to Left Swing
E	KMP	08-21-2006	New FLASH Item 5 was 025-0000-0431-00, Delete Items 10, 11, 12, 24, 27.

Item	Qty	Part Number	Rev	Part Name	PCB Location	Part Length
1	1	025-0000-0318-00	D	Lower Drive Assembly UT 36		in.
2	1	025-0000-0319-00	D	Load Cell Assembly UT 36-20,000 18" Plates		in.
3	1	025-0000-0320-00	C	Upper Platform Assembly UT 36-20,000		in.
4	1	025-0000-0306-00	B	Control Box Assembly UT 36-20,000 lb, 18"		in.
5	1	025-0000-0431-04	B	FLASH - Computer Assembly, UT 36		in.
6	1	018-0000-1465-00	E	FRAME WELDMENT UT 36-20,000		in.
7	1	025-0000-0335-01		DOOR ASSEMBLY, SWING, LH, UT-36		in.
8	1	018-0000-1433-00	F	BASE PLATE		in.
9	1	018-0000-1879-04	A	Support Arm Weldment, FLASH, UT 36		in.
13	1	007-0000-0099-00		LIMIT SWITCH,		in.
14	1	018-0000-2815-00		Upper Limit Switch Bracket, UT 36		in.
15	1	018-0000-2819-00	A	Left Side Shield UT 36 20,000		in.
16	1	018-0000-2821-00	A	Back Shield UT 36 20,000		in.
17	1	018-0000-2820-00	B	Right Side Shield UT 36 20,000		in.
18	1	018-0000-2822-00		Cable Gutter, UT 36		in.
19	1	018-0000-2823-00		Cable Gutter Mount, UT 36		in.
20	4	012-4000-0001-00		RL-1203-P LEVELING FEET		in.
21	1	018-0000-1465-10		FRAME Front Panel UT 36-20,000		in.
22	2	018-0000-1465-11		FRAME Left and Right Panel UT 36-20,000		in.
23	1	018-0000-1226-01		LIMIT SWITCH COVER, UT 36-20,000		in.
25	12	013-0000-0052-00		10-32 X 3/8 BHSCS		in.
26	4	013-0000-0031-00		1/4-20 X 1/2 SHCS		in.
28	2	013-0000-0057-00		4-40 X 1 1/4 SHCS		in.
29	2	013-0000-0004-00		4-40 Hex Nut		in.
30	4	013-0000-0025-00		10-24 X 1/2 SHCS		in.
31	4	013-2000-0019-00		#10 Flat WASHER - CUT IRON		in.
32	46	013-0000-0026-00		10-24 X 1/2 BHSCS		in.
33	4	013-0000-0114-00		5/16-18 X 3/4 BHSCS		in.
34	4	013-2000-0010-00		5/16 Flat Washer		in.
35	2	013-0000-0077-00		6-32 X 1/4 Button Head Cap Screw		in.

Approved by: 

Date: January 2, 2007

**SEE ATTACHED 2 DRAWINGS**



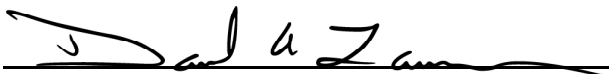
**025-0000-0321-00 E**  
Main Assembly UT 36-20,000

# Parts List

Rev	By	Date	Description
B	MH	01-17-1997	Added Item 31 (2), Item 27 qty was 16, pg. 2
C	DD	02-19-1997	item 27 qty was 18.
D	KMP	03-27-2006	Update to Flash system, Motor and Drive system. Change door to Left Swing
E	KMP	08-21-2006	New FLASH Item 5 was 025-0000-0431-00, Delete Items 10, 11, 12, 24, 27.

Item	Qty	Part Number	Rev	Part Name	PCB Location	Part Length
36	3	013-0000-0221-00		6-32 X 5/8 FHSCS		in.
37	40	013-0000-0052-00		10-32 X 3/8 BHSCS		in.
38	4	013-0000-0257-00		5/8-11 X 1 3/4 SHCS		in.
39	1	007-0000-0052-00		MICRROSWITCH BZ-2RQ181-A2		in.
40	2	013-0000-0223-00		6-32 X 2 PHMS		in.
41	4	013-2000-0084-00		#6 FLAT WASHER		in.
42	4	012-0000-0011-00		Nylon spacer		in.
43	2	013-0000-0002-00		6-32 Hex Nut		in.

Approved by:



Date:

January 2, 2007

**SEE ATTACHED 2 DRAWINGS**

Printed on 01-02-2007, 5:17:13 PM by DAL

Page 4 of 4





**050-0000-0141-00**

# Parts List

FLASH 36 - 35,000 lb (18" Ø x 36" tall)

Rev	By	Date	Description
	DAL	03-24-2009	

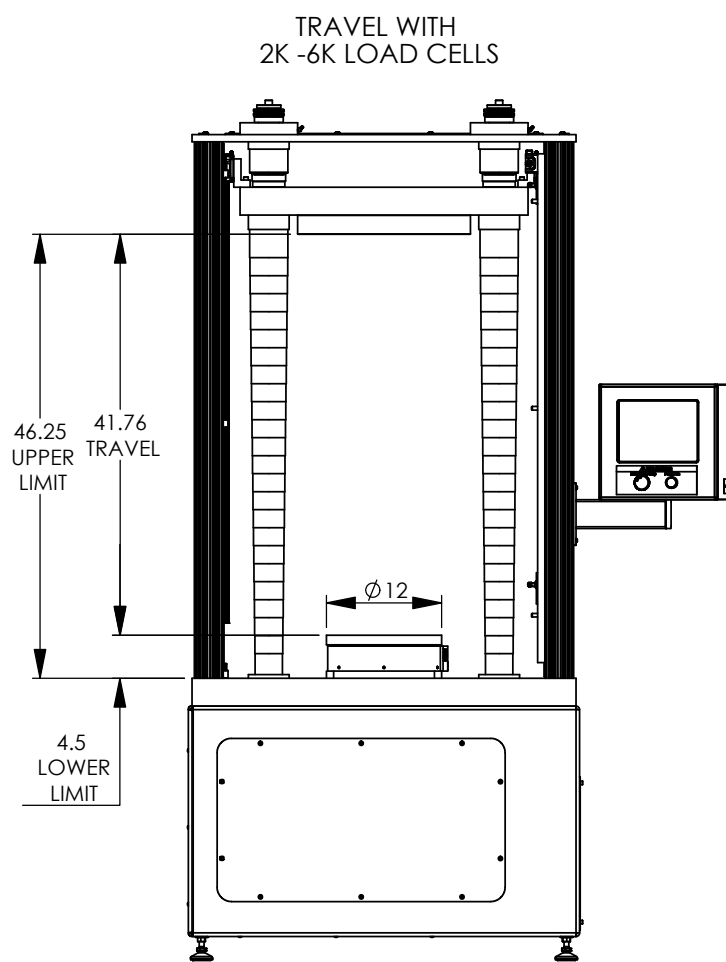
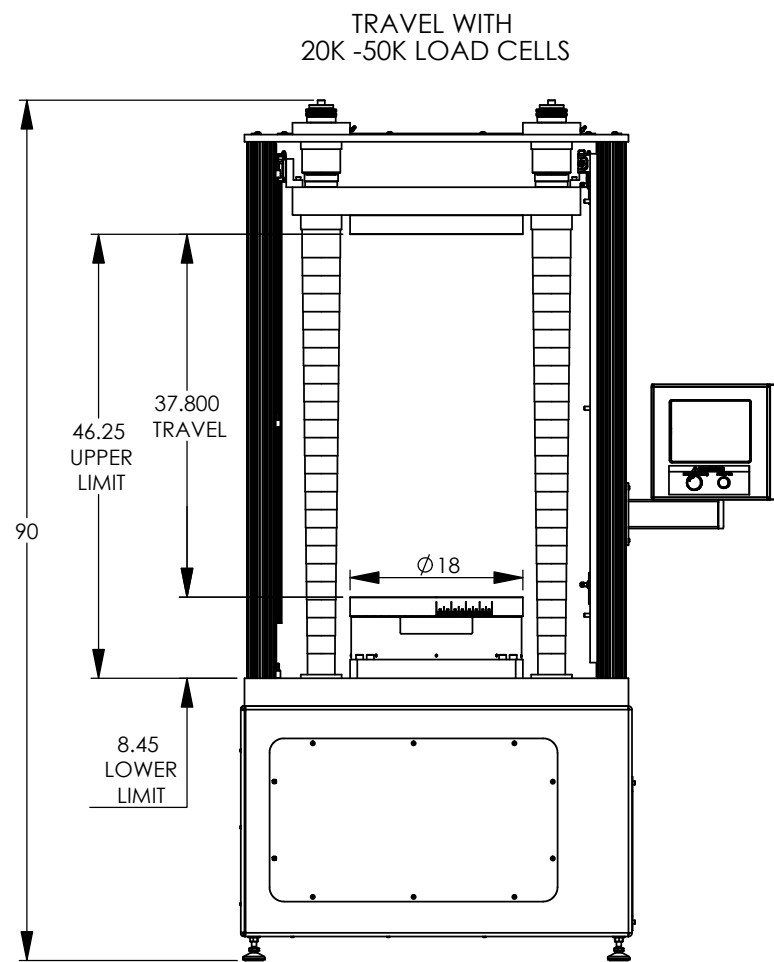
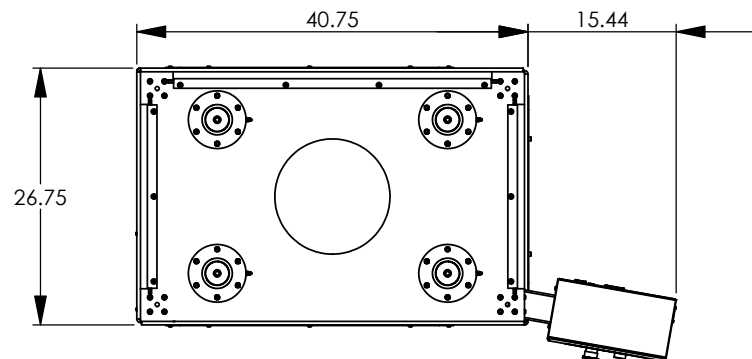
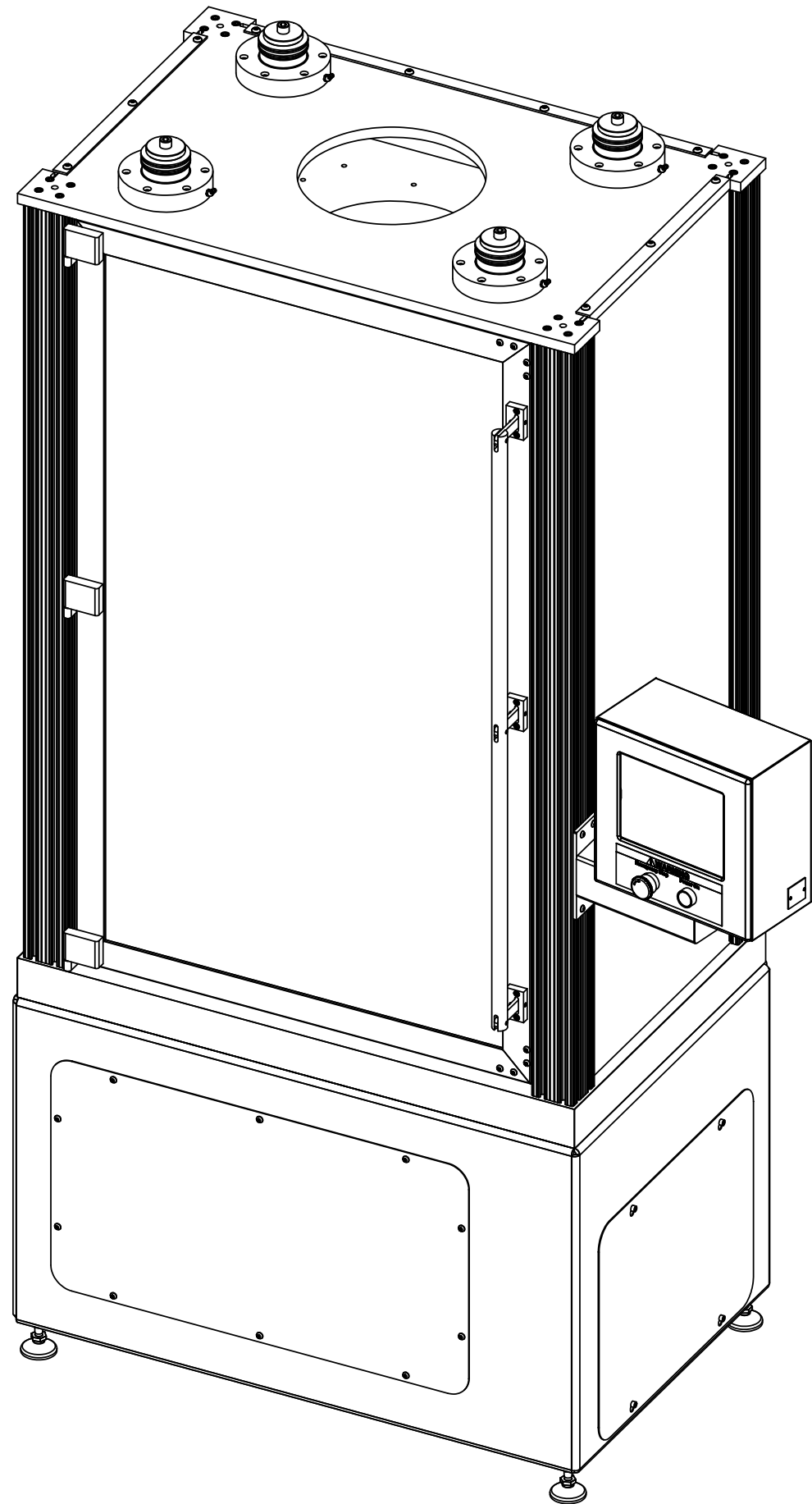
Item	Qty	Part Number	Rev	Part Name	PCB Location	Part Length
1	1	025-0000-0752-00		FLASH 36 Main Assembly (Ø18" x 36" tall)		in.
2	1	025-0000-0756-00	A	FLASH 36 - 35k Drive Assembly		in.
3	Ref	025-0000-0254-30	C	FLASH 36 Load Cell - 35,000 lb - 18" Plates /w TUL		in.
4	1	025-2000-0160-12		Schematic, Flash 36, w/servo, 240vac 3Ph		in.
4		025-2000-0165-08	C	Schematic, Flash 36-X000, Attached computer 240		in.
5	1	060-2000-0031-00		Parts List - Flash 36		in.
6	1	060-1000-0066-00	E	User Manual - FLASH Series 11 & 24		in.
7	1	025-6000-0017-02		Sticker Assembly - FLASH 36 35,000		in.
9	1	060-6000-0114-00		FLASH : System Image Creation Letter		in.

Approved by: \_\_\_\_\_

Date: \_\_\_\_\_

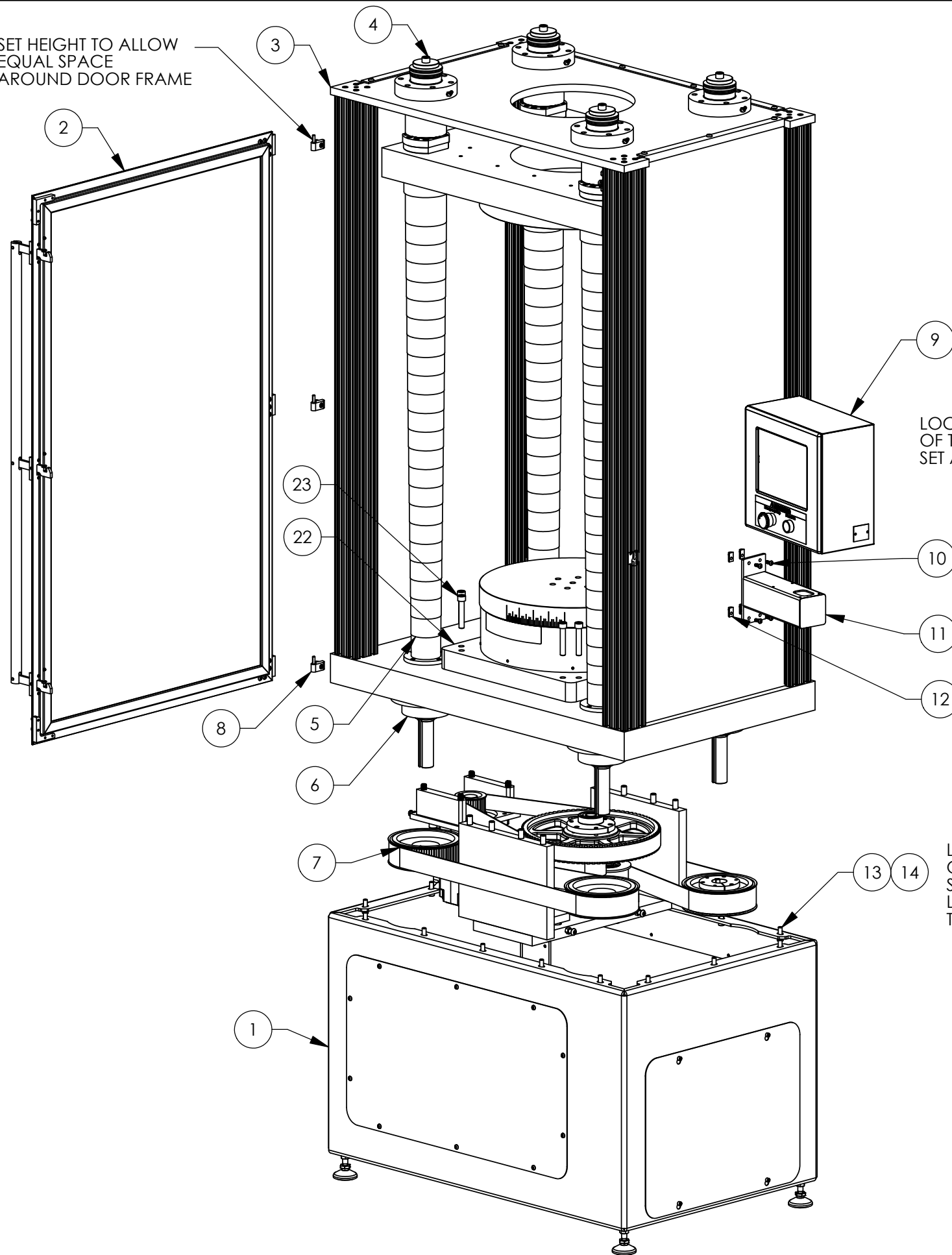


REV	DATE	DESCRIPTION	DRW	APP



		<b>LARSON SYSTEMS INC.</b> 10073 Baltimore St. NE PH. 763-780-2131 Mpls., MN 55449 FAX. 763-780-2182	
		APPROVALS DRAWN SGS APP. APP.	DATE 4/23/09
		SCALE: NONE	SHEET 1 OF 3

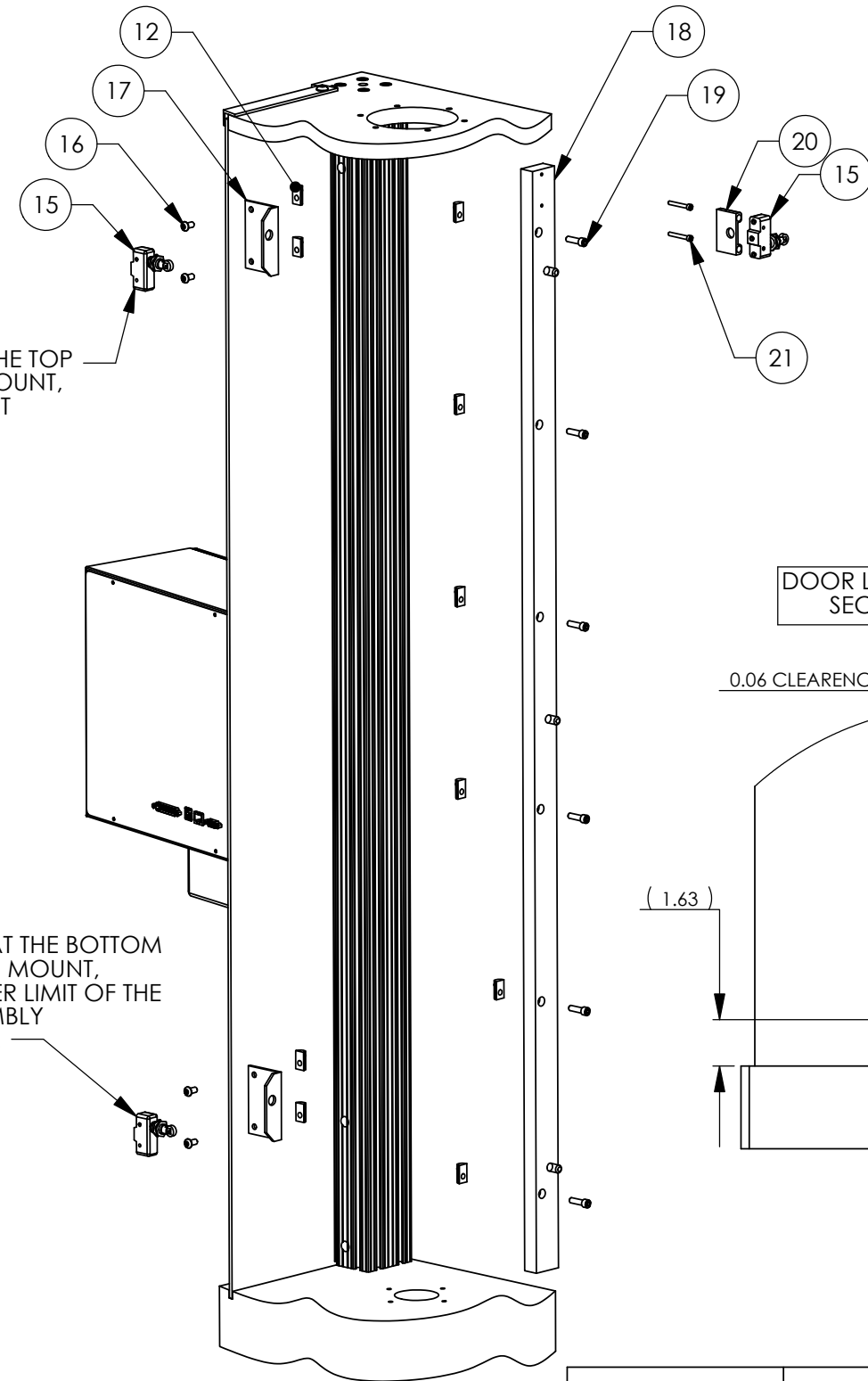
SET HEIGHT TO ALLOW  
EQUAL SPACE  
AROUND DOOR FRAME



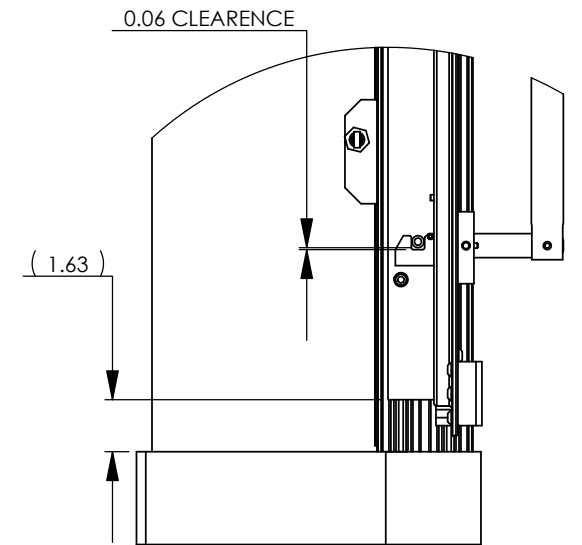
LOCATE SWITCH AT THE TOP  
OF THE PLATFORM MOUNT,  
SET AT THE UPPER LIMIT

LOCATE SWITCH AT THE BOTTOM  
OF THE PLATFORM MOUNT,  
SET FOR THE LOWER LIMIT OF THE  
LOAD CELL ASSEMBLY  
THAT IS INSTALLED.

DOOR STOP/PLATFORM AND DOOR LIMIT SWITCHES



DOOR LOCK POSITION  
SECTION VIEW



**LARSON SYSTEMS INC.**

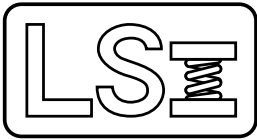
10073 Baltimore St. NE PH. 763-780-2131  
Mpls., MN 55449 FAX. 763-780-2182

**B**

SCALE: NONE

DWG.# 025-0000-0752-00

SHEET 2 OF 3



025-0000-0752-00

# Parts List

FLASH 36 Main Assembly (Ø18" x 36" tall)

Rev	By	Date	Description
	SGS	03-09-2009	

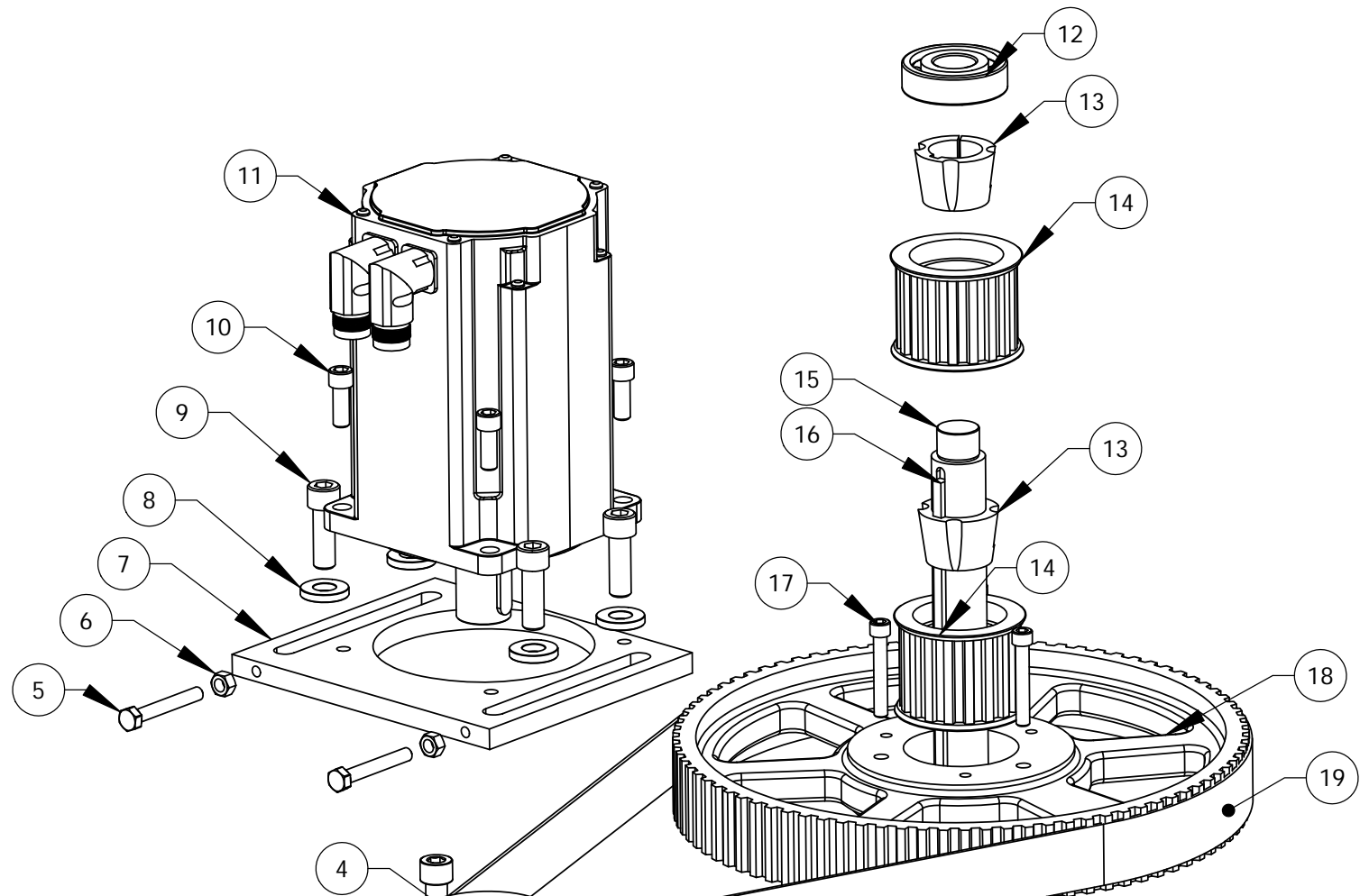
Item	Qty	Part Number	Rev	Part Name	PCB Location	Part Length
1	1	025-0000-0755-00		FLASH 36 - Lower Assembly		in.
2	1	025-0000-0753-00		FLASH 36 - Door Panel		in.
3	1	025-0000-0754-00		FLASH 36 - Upper Assembly		in.
4	4	025-0000-0502-01		Flash 36-50,000 Upper Ballscrew/ Bearing Assembly		in.
5	4	025-0000-0502-02		Flash 36-50,000 Ballscrew Covers/ Assembly		in.
6	4	025-0000-0502-00	B	Flash 36-50,000 Lower Ballscrew/ Bearing Assembly		in.
7	Ref	025-0000-0756-00		FLASH 36 - 30k Drive Assembly		in.
8	3	012-0000-0043-00		T-Slot Lift Off Hinge		in.
9	1	025-0000-0431-04	B	FLASH - Computer Assembly, UT 36		in.
10	4	013-0000-0093-00		1/4-20 X 5/8 BHSCS		in.
11	1	018-0000-1879-06		Support Arm Weldment, FLASH 36		in.
12	14	013-1000-0086-00		T-Nut w/Ball Spring 1/4-20		in.
13	16	013-0000-0167-00		3/8-16 X 1 SHCS		in.
14	16	013-2000-0100-00		3/8" FLAT WASHERS		in.
15	Ref	007-0000-0052-00		Roller Plunger, Limit Switch		in.
17	2	018-0000-3147-00		LS Bracket - T-Slot		in.
18	1	018-0000-3130-00		Door Stop, FLASH 36-50000		in.
19	6	013-0000-0202-00		1/4-20 X 7/8 SHCS		in.
20	1	018-0000-3146-00		LS Door Bracket		in.
21	2	013-0000-0092-00		8-32 X 1-1/4 SHCS		in.
22	Ref	025-0000-0254-30	C	FLASH 36 Load Cell - 35,000 lb - 18" Plates /w TUL		in.
23	Ref	013-0000-0483-00		1/2-13 X 2-3/4 SHCS		in.

Approved by:

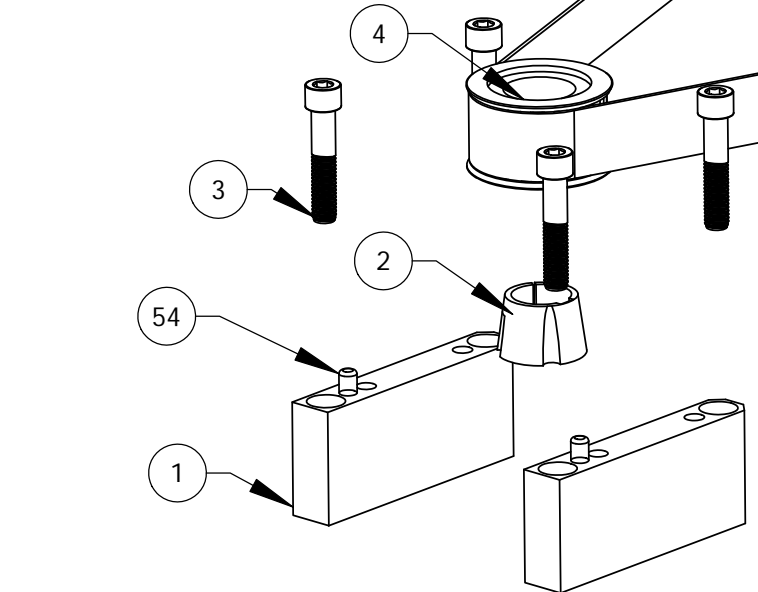
Date:

July 3, 2009

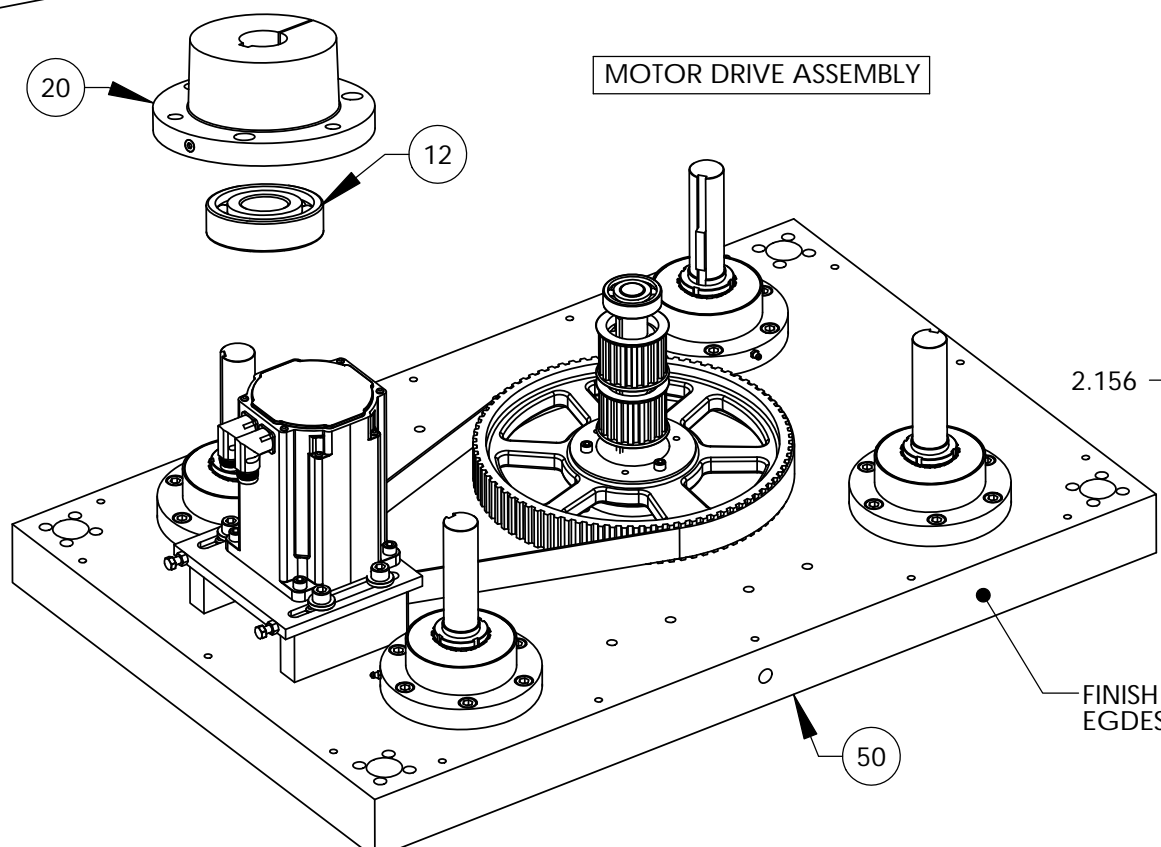
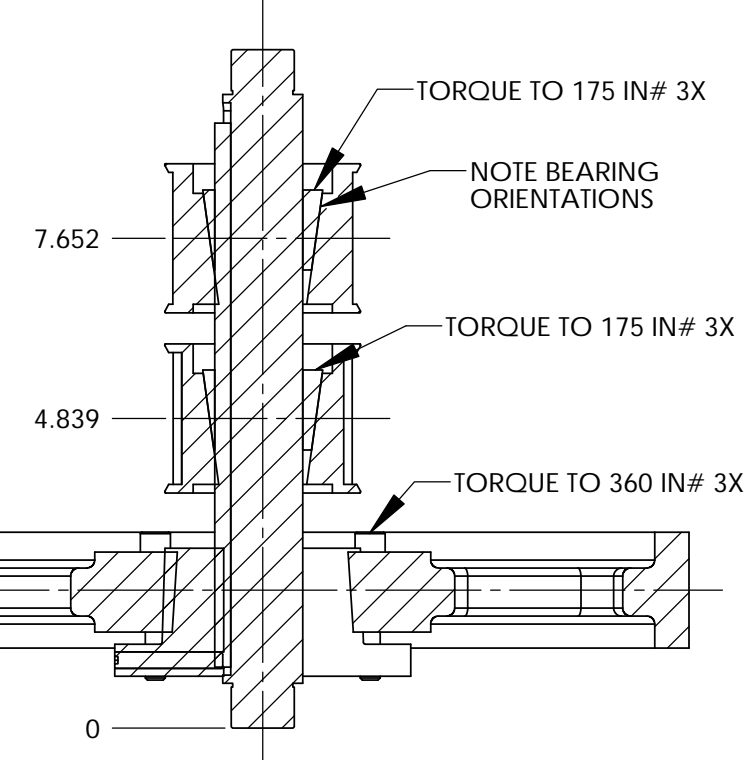
SEE ATTACHED 2 DRAWINGS



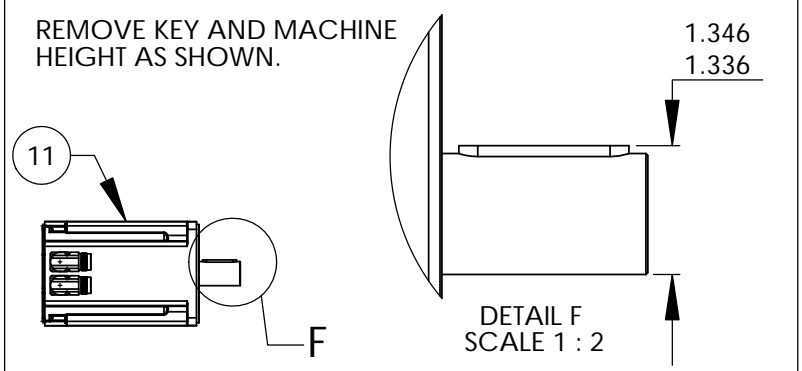
MOTOR DRIVE ASSEMBLY



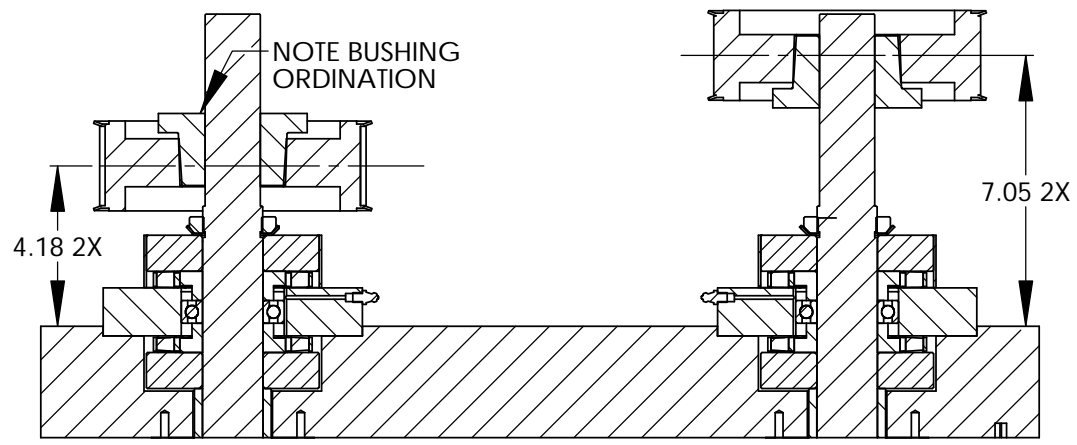
DRIVEN SHAFT ASSEMBLY



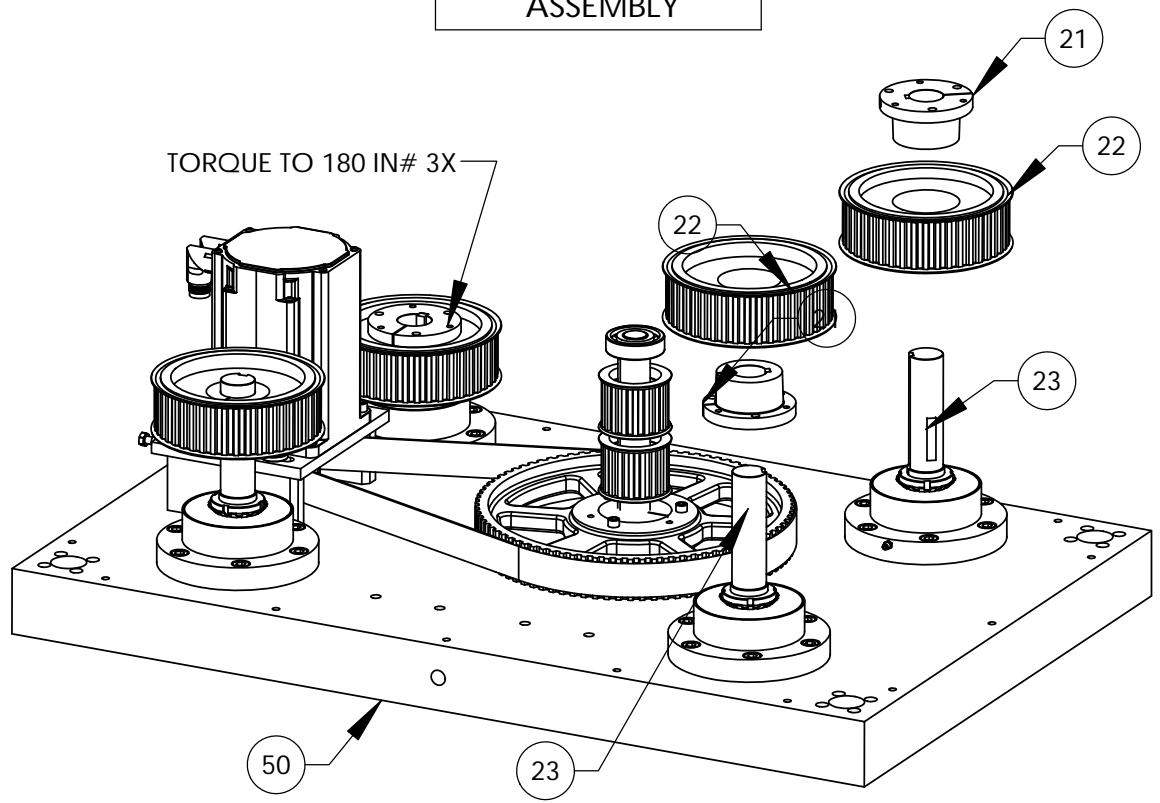
FINISH BLACK OUTSIDE EDGES ONLY AT ASSY



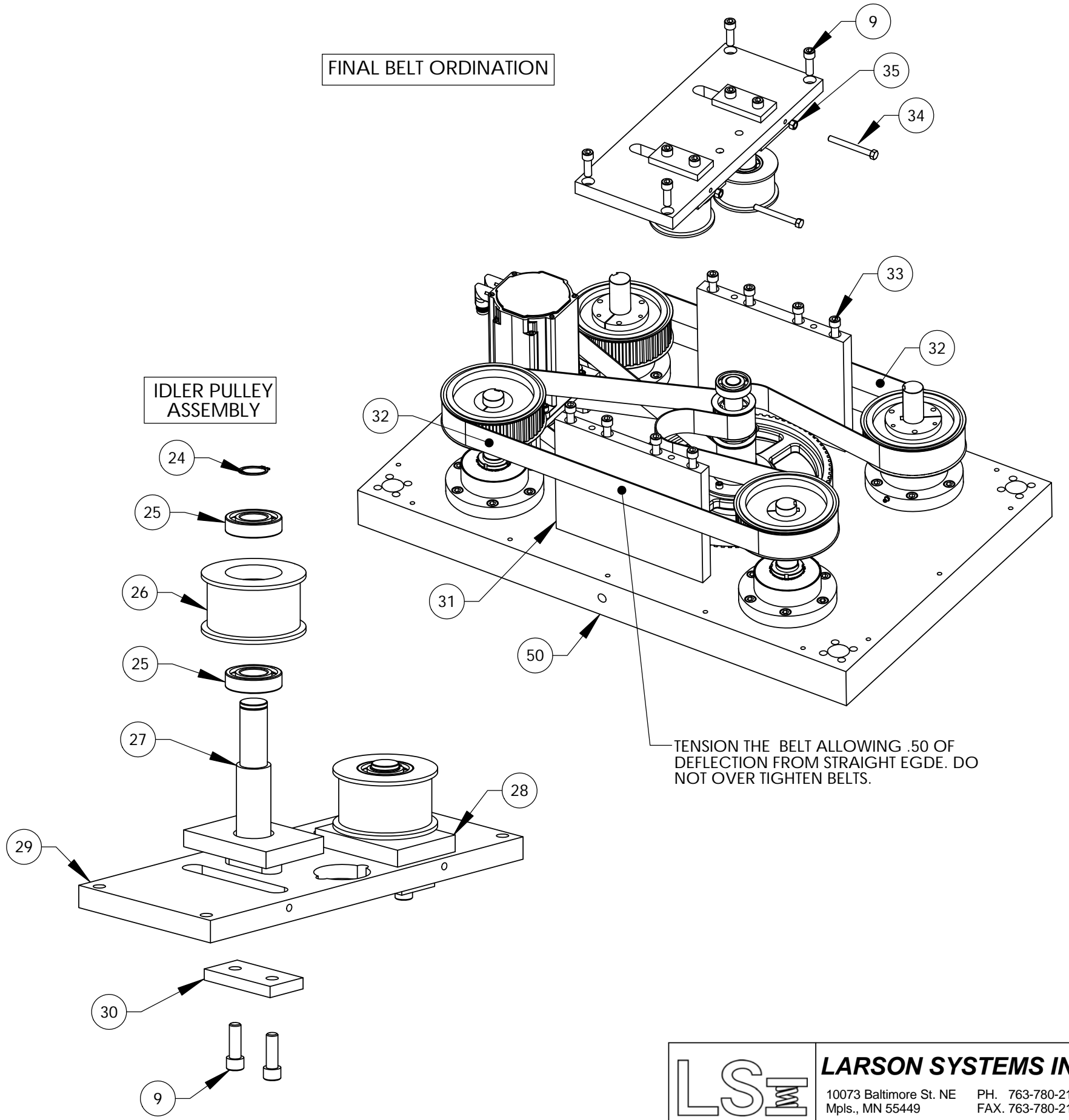
<b>LSI</b>		<b>LARSON SYSTEMS INC.</b>	
10073 Baltimore St. NE Mpls., MN 55449		PH. 763-780-2131 FAX. 763-780-2182	
APPROVALS	DATE	FLASH 36 - Drive Assembly	
DRAWN SGS	4/21/09	B	REV: -
APP.		DWG. NO. 025-0000-0756-00A	
APP.		SCALE: NONE	SHEET 1 OF 5

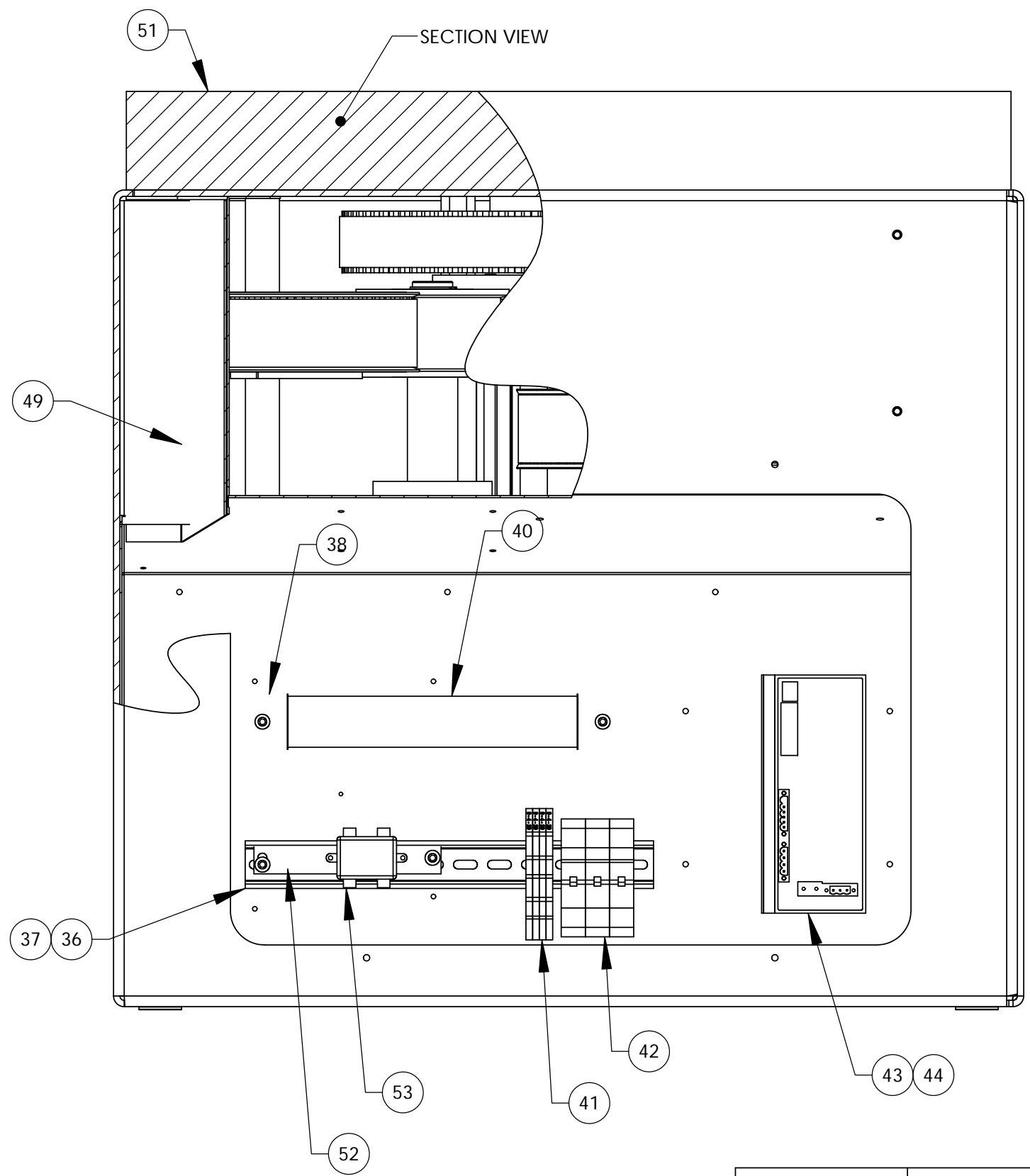
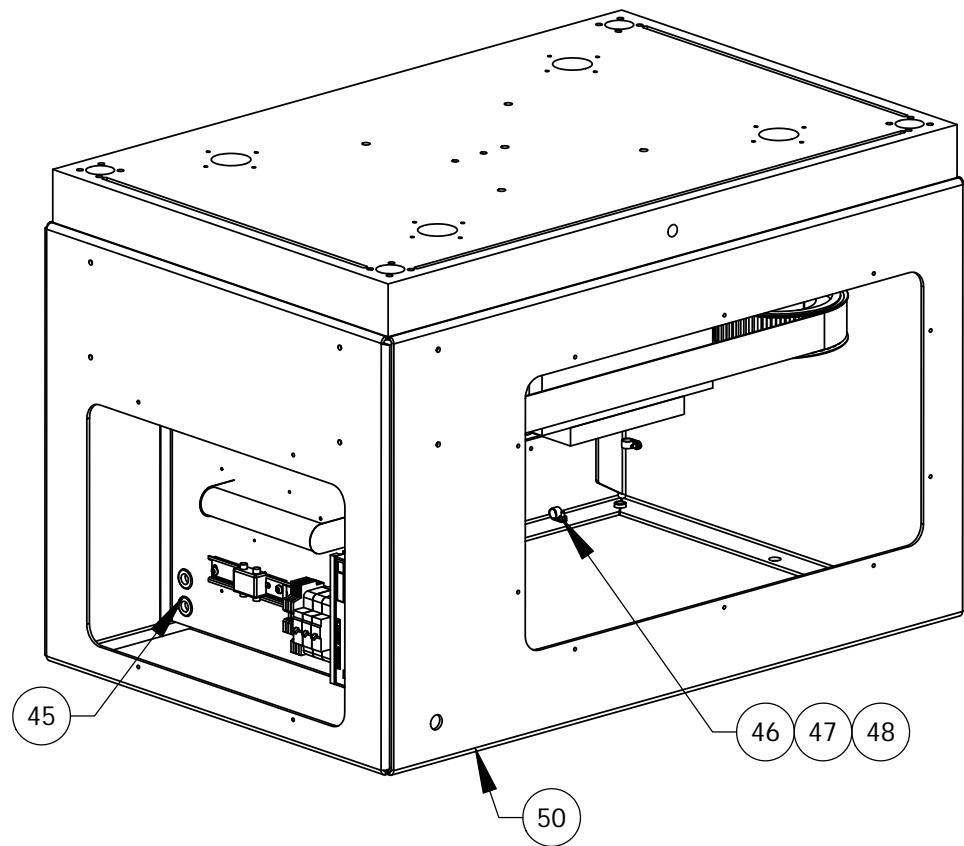


**BALLSCREW PULLEY ASSEMBLY**



**FINAL BELT ORDINATION**







**025-0000-0756-00 A**  
FLASH 36 - 35k Drive Assembly

# Parts List

Rev	By	Date	Description
	SGS	03-30-2009	
A	RRS	07-12-2012	Replaced item 32 was 013-5000-0226-00 is 013-5000-0244-00 Added 54

Item	Qty	Part Number	Rev	Part Name	PCB Location	Part Length
1	2	018-0000-3131-00		Motor Standoff, FLASH 36-50000		in.
2	1	018-0000-3120-00	A	Drive Pulley 1215 Bushing		in.
3	4	013-0000-0492-00		1/2-13 x 2-1/2 SHCS		in.
4	1	013-5000-0101-01		PULLEY TB18H150 MARTIN		in.
5	2	013-0000-0508-00		5/16-18 X 2 1/4 Hex Fully Threaded		in.
6	2	013-0000-0111-00		5/16-18 Hex Nut		in.
7	1	018-0000-3112-00		Motor Mount		in.
8	4	013-2000-0385-00		1/2 Washer - Hardened		in.
9	12	013-0000-0225-00		1/2-13 X 1 1/2 SHCS		in.
10	4	013-0000-0167-00		3/8-16 X 1 SHCS		in.
11	Ref	014-2000-0033-00		SERVO MOTOR for 36-30,000		in.
12	2	013-2000-0098-01		Radial Bearing - Sealed		in.
13	2	013-5000-0077-01		TL1215-1 1/4" BORE X 1/4 KW TAPER LOCK BUSH		in.
14	2	013-5000-0101-00		Pulley - 18 Teeth		in.
15	1	018-0000-3108-00		Drive Shaft		in.
16	1	018-0000-1894-08	C	Key, .2495/.2500 X 8.50		in.
17	3	013-0000-0076-00		5/16-18 X 2 SHCS		in.
18	1	013-5000-0072-03		TIMING PULLEY - 84 Teeth		in.
19	1	013-5000-0225-00		Motor - Timing Belt		in.
20	1	013-5000-0141-00		BUSHING QD , SF Type		in.
21	4	013-5000-0223-00		BUSHING SK		in.
22	4	013-5000-0102-00		TIMMING PULLEY - 44 Teeth		in.
23	4	018-0000-2369-00		UT 36-50,000 3/8" x 1.875 key		in.
24	2	013-2000-0257-00		5100-112 snap		in.
25	4	013-2000-0255-00		Radial Bearing - Sealed		in.
26	2	018-0000-2283-00	C	UT 36-50,000, Idler Pulley		in.
27	1	018-0000-3114-00		UT 36-50,000, IDLER SHAFT WELDMENT		in.
28	1	018-0000-3109-00		Drive Pivot Plate, FLASH 36-50,000		in.
29	1	018-0000-3114-01		UT 36-50,000, IDLER SHAFT WELDMENT		in.
30	2	018-0000-3129-00		Clamp Plate, FLASH 36-50000		in.

Approved by:

Date:

August 6, 2012

**SEE ATTACHED 3 DRAWINGS**

Printed on 08-06-2012, 5:31:19 PM by DAL

Page 4 of 5



**025-0000-0756-00 A**  
FLASH 36 - 35k Drive Assembly

# Parts List

Rev	By	Date	Description
	SGS	03-30-2009	
A	RRS	07-12-2012	Replaced item 32 was 013-5000-0226-00 is 013-5000-0244-00 Added 54

Item	Qty	Part Number	Rev	Part Name	PCB Location	Part Length
31	2	018-0000-3110-00		Drive Pilot Upright		in.
32	2	013-5000-0244-00		Final Drive- Timing Belt		in.
33	8	013-0000-0505-00		1/2-13 X 9.00 SHCS		in.
34	2	013-0000-0506-00		3/8-16 X 3 1/2 Hex Fully Threaded		in.
35	2	013-0000-0238-00		3/8-16 Finished Hex Nut, Zinc		in.
36	1	009-4000-0013-00		DIN RAIL, DN-R3551		12 in.
37	3	013-0000-0128-00		1/4-20 X 3/8 BHSCS		in.
38	1	013-2000-0388-00		Mounting Kit FOR 'FVE' AND 'AVE' RES 300		in.
40	1	005-2000-0009-00		RES EDGEWOUND FIX 10 OHM 300W		in.
41	5	009-4000-0030-00		TERMINAL BLOCK, Cross Connected, SCREWLESS		in.
42	1	008-1000-0006-00		CIRCUIT BREAKER, 25 AMP, THREE-POLE, DIN		in.
43	Ref	011-3000-0020-00		SERVO MOTOR DRIVE, 12 AMP LIMIT		in.
44	2	013-0000-0084-00		6-32 X 1/2 SHCS		in.
45	2	013-2000-0055-00		9/16 ID RUBBER GROMMET		in.
46	7	013-3000-0025-00		Cable Clamp, 1/2" Dia.		in.
47	7	013-0000-0113-00		8-32 X 3/4 BHSCS		in.
48	7	013-0000-0009-00		8-32 Hex Machine Screw Nut, Zinc		in.
49	1	018-0000-3132-00	A	Harness Cover		in.
50	Ref	018-0000-3117-00	B	UT 36-50,000, 26X40 Base Stand Weldment		in.
51	Ref	018-0000-3107-00	A	Flash 36,50,000 Base Plate		in.
52	1	018-0000-3155-00		Power Line Filter Mount		in.
53	1	008-2000-0001-00		POWER LINE FILTER, 250VAC, 3 AMPS		in.
54	2	013-2000-0150-00		3/8" DIA. X 1" LENGTH DOWEL PIN		in.

Approved by:

Date:

August 6, 2012

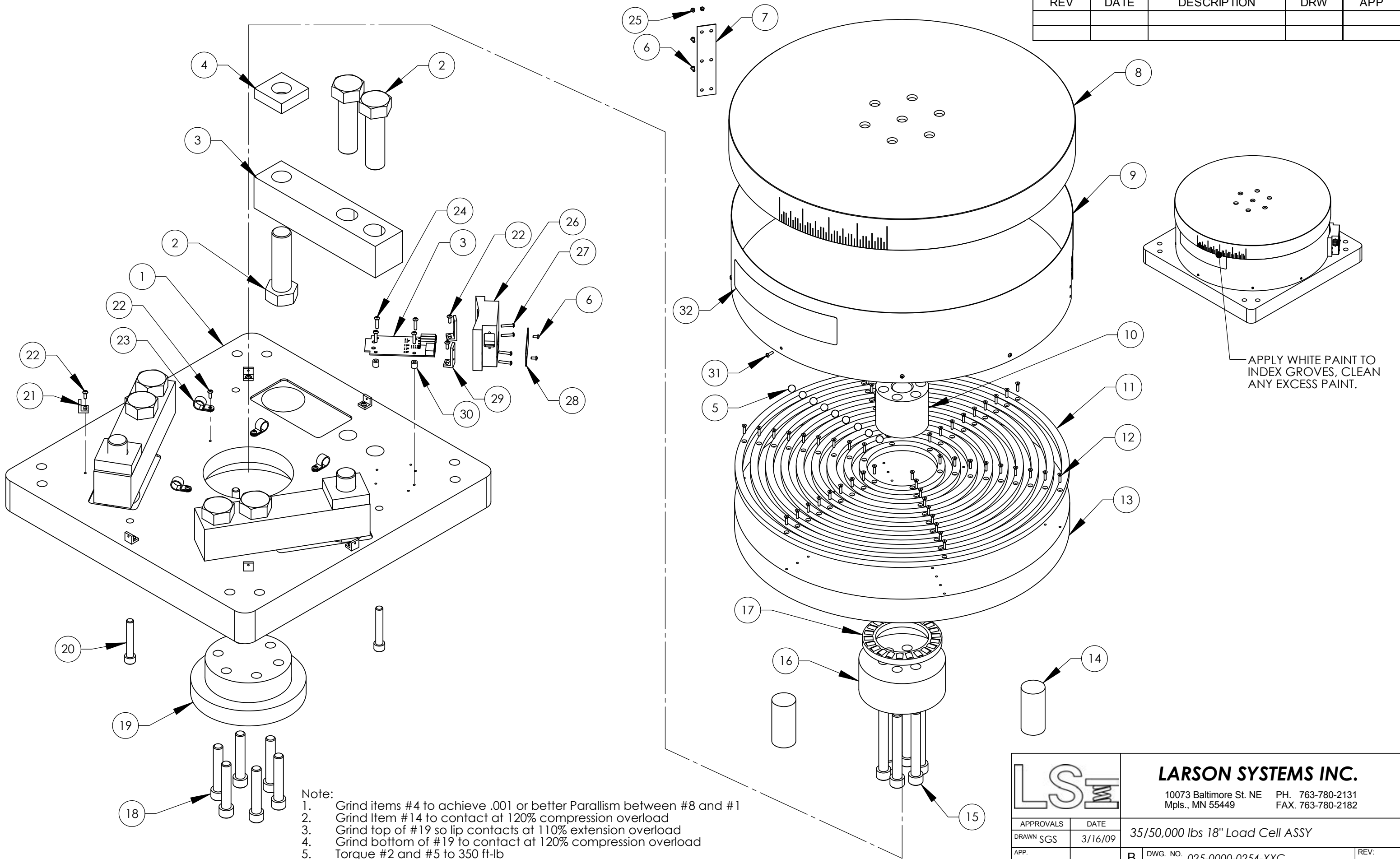
**SEE ATTACHED 3 DRAWINGS**

Printed on 08-06-2012, 5:31:19 PM by DAL

Page 5 of 5



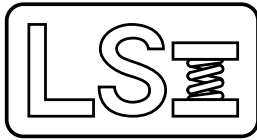
REV	DATE	DESCRIPTION	DRW	APP



APPLY WHITE PAINT TO INDEX GROOVES, CLEAN ANY EXCESS PAINT.

- Note:
1. Grind items #4 to achieve .001 or better Parallism between #8 and #1
  2. Grind Item #14 to contact at 120% compression overload
  3. Grind top of #19 so lip contacts at 110% extension overload
  4. Grind bottom of #19 to contact at 120% compression overload
  5. Torque #2 and #5 to 350 ft-lb
  6. Torque #15 and #18 to 150 ft lb

		<b>LARSON SYSTEMS INC.</b> 10073 Baltimore St. NE PH. 763-780-2131 Mpls., MN 55449 FAX. 763-780-2182	
APP.	SGS	3/16/09	35/50,000 lbs 18" Load Cell ASSY
APP.	B	DWG. NO. 025-0000-0254-XXC	REV: -
SCALE: NONE			SHEET 1 OF 3



025-0000-0254-30 C

# Parts List

FLASH 36 Load Cell - 35,000 lb - 18" Plates /w TUL

Rev	By	Date	Description
	SMH	05-10-2002	
A	SMH	06-28-2002	ADDED 018-0000-2404 AND 013-0000-339, ADDED SHEET 2, 013-0000-101 WAS 013-0000-033,
B	SMH	07-08-2002	013-0000-0210 was 013-0000-0330
C	DAL	03-28-2009	redesign to shorten height, added -30

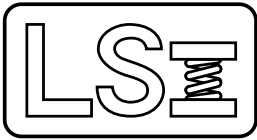
Item	Qty	Part Number	Rev	Part Name	PCB Location	Part Length
1	1	018-0000-2321-00	B	Load Cell Base Plate 18" UT 36 50,000		in.
2	9	013-0000-0328-00		1-12 X 3 1/2 Hex Bolt (grade 8)		in.
3	1	025-1000-0565-04		3 LOAD CELL ASSEMBLY, SMART CELL, 35,000 LB		in.
4	3	018-0000-2293-01	A	UT 36-50,000, Top Load Cell Spacer		in.
5	750	013-2000-0102-00		3/8" DIA. CHROME STEEL BALL - GRADE 25		in.
6	6	013-0000-0020-00		4-40 X 1/4 Button Head Cap Screw		in.
7	1	018-0000-2371-01	A	UT 36-50,000, Load Cell Shroud Plate		in.
8	1	018-0000-2318-00	B	Load Cell Platform 18" UT 36 50,000		in.
9	1	018-0000-2320-01		Load Cell Shroud 18" Plate UT 36 50,000		in.
10	1	018-0000-2298-00	A	UT 36-50,000, THRUST BEARING RETAINER		in.
11	1	018-0000-2294-00	A	UT 36-50,000, BEAMING CONTROL RING		in.
11	1	018-0000-2294-01	A	UT 36-50,000, BEAMING CONTROL RING		in.
11	1	018-0000-2294-02	A	UT 36-50,000, BEAMING CONTROL RING		in.
11	1	018-0000-2294-03	A	UT 36-50,000, BEAMING CONTROL RING		in.
11	1	018-0000-2294-04	A	UT 36-50,000, BEAMING CONTROL RING		in.
11	1	018-0000-2294-05	A	UT 36-50,000, BEAMING CONTROL RING		in.
11	1	018-0000-2294-06	A	UT 36-50,000, BEAMING CONTROL RING		in.
11	1	018-0000-2294-07	A	UT 36-50,000, BEAMING CONTROL RING		in.
11	1	018-0000-2294-08	A	UT 36-50,000, BEAMING CONTROL RING		in.
12	54	013-0000-0019-00		4-40 X 1/2 FHSCS		in.
13	1	018-0000-2319-00	B	Load Cell Support Plate UT 36 50,000		in.
14	3	018-0000-2297-01	A	UT 36-50,000, OVERLOAD STOP		in.
15	6	013-0000-0210-00		1/2-13 X 4 SHCS		in.
16	1	018-0000-2299-00	B	UT 36-50,000, THRUST BEARING PLATE		in.
17	1	013-2000-0253-00		THRUST BEARING		in.
18	6	013-0000-0483-00		1/2-13 X 2-3/4 SHCS		in.
19	1	018-0000-2404-01	A	UT 36-50,000, Extension Over Load Stop		in.
20	3	013-0000-0101-00		3/8-16 X 2 1/4 SHCS		in.
21	7	018-0000-0547-00	A	ANGLE BRACE (H.D.) LOAD CELL (INNER)		in.
22	15	013-0000-0045-00		6-32 X 3/8 BHSCS		in.

Approved by:

Date:

July 3, 2009

SEE ATTACHED DRAWING



025-0000-0254-30 C

# Parts List

FLASH 36 Load Cell - 35,000 lb - 18" Plates /w TUL

Rev	By	Date	Description
	SMH	05-10-2002	
A	SMH	06-28-2002	ADDED 018-0000-2404 AND 013-0000-339, ADDED SHEET 2, 013-0000-101 WAS 013-0000-033,
B	SMH	07-08-2002	013-0000-0210 was 013-0000-0330
C	DAL	03-28-2009	redesign to shorten height, added -30

Item	Qty	Part Number	Rev	Part Name	PCB Location	Part Length
23	6	013-3000-0025-00		Cable Clamp, 1/2" Dia.		in.
24	4	013-0000-0021-00		6-32 X 5/8 BHSCS		in.
25	2	013-0000-0369-00		4-40 X 1/8 BHSCS Black Oxide		in.
26	1	018-0000-1244-01	B	Load Cell Connector Mounting 9 Pin		in.
27	4	013-0000-0234-00		4-40 X 5/8 BHSCS		in.
28	1	018-0000-0803-00	C	Load Cell Cover Plate		in.
29	2	018-0000-0937-00	B	Load Cell Angle Brace		in.
30	4	012-0000-0011-00		Nylon spacer		in.
31	7	013-0000-0016-00		4-40 X 3/8 BHSCS		in.
32	1	017-0000-0250-00		Load Cell Index Label		in.

Approved by: 

Date: July 3, 2009

SEE ATTACHED DRAWING





# 050-0000-0100-00 A

# Parts List

## FLASH 36 - 50,000 lb (18" Ø x 36" tall)

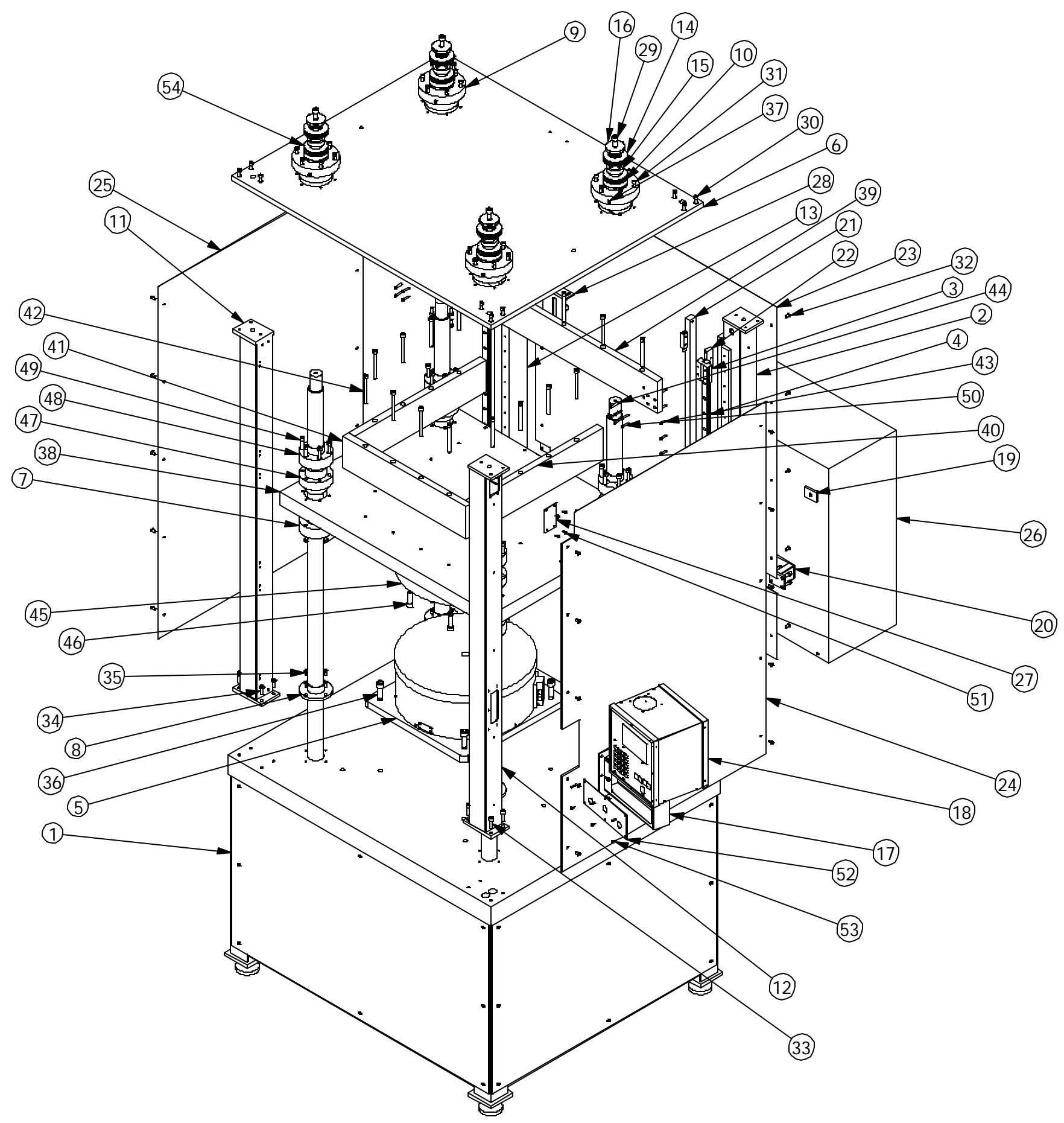
Rev	By	Date	Description
	SMH	06-25-2002	
A	MDL	01-28-2003	Changed 025-0000-0254-51 to -50, moved 017 stickers to 025-6000-0017-00

Item	Qty	Part Number	Rev	Part Name	PCB Location	Part Length
1	1	025-0000-0497-00		UT 36-50,000 Main Assembly		in.
2	1	025-0000-0254-50	C	FLASH 36 Load Cell - 50,000 lb - 18" Plates w/ TUL		in.
3	1	060-1000-0029-00	Q	User Manual - FLASH 25 and FLASH 36		in.
4	1	060-2000-0019-00		Parts List - UT 36-50,000		in.
5	1	025-1000-0341-00		UT 36 SLAVECARD TO PAC SCI CABLE		in.
6	1	025-1000-0342-00		UT 36 SC900 MOTOR CONTROL CABLE		in.
7	1	025-1000-0343-00		DOOR/START SWITCH CABLE		in.
8	1	025-1000-0344-00		UT 36 POWER SUPPLY TO CORCOM		in.
9	1	025-1000-0364-00		UT 36-50,000, Load Cell Cable		in.
10	1	010-4000-0017-00		Power Cable, CP-A6-015-905		in.
11	1	010-4000-0018-00		FEEDBACK CABLE, CF-RO-015-SC905-A		in.
12	1	025-2000-0080-00		UT 36-50,000, WIRING SCHMATIC		in.
13	1	025-6000-0017-00	A	Sticker Assembly - UT 36 50,000		in.
14	1	060-6000-0114-00		FLASH : System Image Creation Letter		in.

Renamed to FLASH 36 instead of UT 36. -MDL, 7-27-2006

Approved by: 

Date: February 8, 2003



REV.	DATE	DESCRIPTION	DRW	APPROVED

65	1	025-0000-517	Over Travel Limit Switch (NOT SHOWN)
64	1	025-0000-501	Door Assembly (NOT SHOWN)
63	1	007-0000-036	Contact Block (NOT SHOWN)
62	1	007-0000-035	E-stop Button (NOT SHOWN)
61	2	003-2000-024	Light Bulb (NOT SHOWN)
60	2	003-2000-023	Light Fixture (NOT SHOWN)
59	1	007-0000-078	Contact Block (NOT SHOWN)
58	1	007-0000-098	Yellow Flush Head Button (NOT SHOWN)
57	1	007-0000-081	Contact Block (NOT SHOWN)
56	1	007-0000-068	Blue Flush Head Button (NOT SHOWN)
55	8	013-5000-147	Ballscrew Cover (NOT SHOWN)
54	4	018-0000-2390	Bearing Dust Cover
53	6	013-0000-045	6-32 X 3/8 BHSCS
52	1	018-0000-1218D	Arm Cover
51	4	013-0000-052	10-32 X 3/8 BHSCS
50	8	013-0000-336	M5 X 25 SHCS
49	20	013-0000-086	3/8-16 X 2 3/4 SHCS
48	4	018-0000-2264A	Ball Nut Spacer
47	4	013-5000-143	Ball Nut
46	6	013-0000-335	1/2-13 X 1 3/4 SHCS
45	1	018-0000-2322	Upper Platform, 18"
44	2	013-0000-027	10-32 X 1 1/4 SHCS
43	34	013-0000-115	10-32 X .750 SHCS
42	18	013-0000-330	3/8-16 X 4.00 SHCS
41	1	018-0000-2279	Upper Platform Support
40	2	018-0000-2280	Upper Platform Support
39	1	018-0000-2281	Linear Bearing Mount
38	1	018-0000-2257-XXA	Upper Platform Mount
37	4	013-1000-012	Grease Fitting
36	4	013-0000-257	5/8-11 X 1 3/4 SHCS
35	21	013-0000-031	1/4-20 X 1/2 SHCS
34	2	013-0000-036	3/8-16 X 1.00 BHSCS
33	14	013-0000-100	3/8-16 X 1 1/4 SHCS
32	32	013-0000-105	1/4-20 X 1/2 BHSCS
31	24	013-0000-154	5/16-18 X 1 1/4 SHCS
30	36	013-0000-055	5/16-18 X 3/4 SHCS
29	4	013-0000-090	1/2-13 X 1.00 SHCS
28	1	018-0000-2387	Limit Switch Bracket
27	1	018-0000-2372	Access Cover
26	1	025-0000-498	Power Control Box ASSY
25	1	018-0000-2272	Left Side Cover
24	1	018-0000-2271	Right Side Cover
23	1	018-0000-2273	Rear Cover
22	1	018-0000-2276	Reader Head Mount
21	1	014-1000-036	36", Linear Encoder
20	1	018-0000-2275	Standoff Weldment
19	2	018-0000-2274	Box Spacer
18	1	025-0000-023-06D	Computer Head Assembly
17	1	018-0000-2088	Arm Weldment
16	4	018-0000-2277	Belleville Plate
15	4	018-0000-2323	Belleville Spacer
14	16	013-2000-256	Belleville Washer
13	1	018-0000-2259-02	UT 36 Right Vertical Support
12	1	018-0000-2259-00	UT 36 Right Vertical Support
11	1	018-0000-2259-01	UT 36 Left Vertical Support
10	4	013-2000-254	Angler Contact Bearing
9	4	018-0000-2266	Upper Bearing Retainer
8	4	018-0000-2265	Ballscrew Cover Retainer
7	4	018-0000-2267A	Ballscrew Cover Upper Retainer
6	1	018-0000-2256-XXB	Top Plate
5	1	025-0000-254-51	50,000 lbs 18" Load Cell ASSY
4	2	013-2000-074-00	Linear Rail
3	2	013-2000-074-01	Linear Bearing
2	1	018-0000-2259-03	UT 36 Right Vertical Support
1	1	025-0000-496	UT 36, 50,000, Lower ASSY
ITEM NO.	QTY.	PART NO.	DESCRIPTION

UNLESS OTHERWISE SPECIFIED  
DIMENSIONS ARE IN INCHES  
TOLERANCES ARE:  
.XX ± .01  
.XXX ± .005

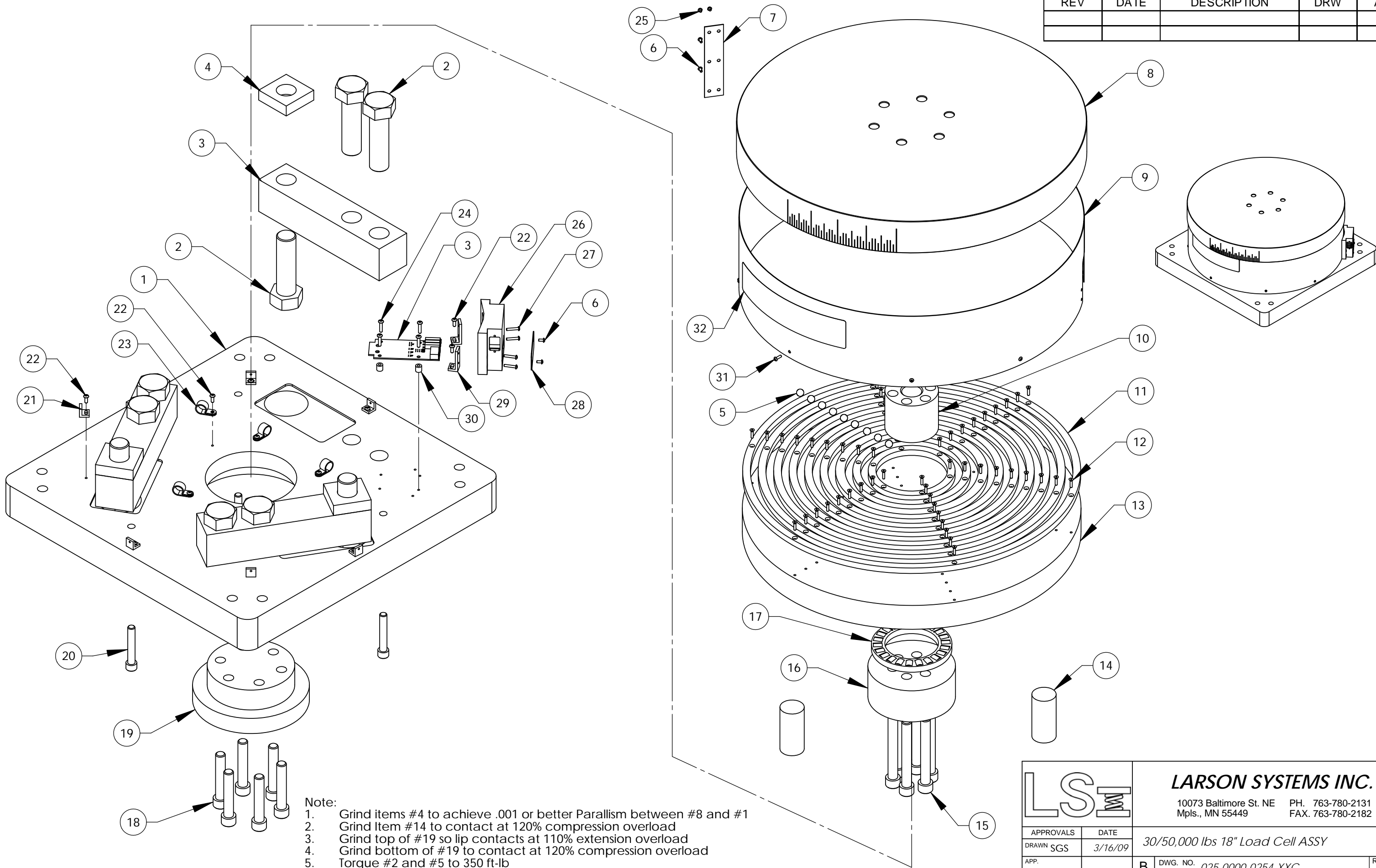


**LARSON SYSTEMS INC.**  
10073 Baltimore St. NE PH. 763-780-2131  
Mpls., MN 55449 FAX. 763-780-2182

MATERIAL	APPROVALS	DATE
FINISH	DRAWN SMH	6/25/02
HEAT TREAT	APPR.	

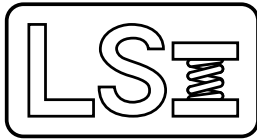
UT 36-50,000, Main Assembly  
DWG. NO. 025-0000-497  
SCALE: NONE SHEET 1 OF 1

REV	DATE	DESCRIPTION	DRW	APP



- Note:
1. Grind items #4 to achieve .001 or better Parallism between #8 and #1
  2. Grind Item #14 to contact at 120% compression overload
  3. Grind top of #19 so lip contacts at 110% extension overload
  4. Grind bottom of #19 to contact at 120% compression overload
  5. Torque #2 and #5 to 350 ft-lb
  6. Torque #15 and #18 to 150 ft lb

		<b>LARSON SYSTEMS INC.</b> 10073 Baltimore St. NE PH. 763-780-2131 Mpls., MN 55449 FAX. 763-780-2182	
DRAWN SGS		3/16/09	
APP.		30/50,000 lbs 18" Load Cell ASSY	
APP.		B	DWG. NO. 025-0000-0254-XXC
SCALE: NONE		REV: -	
SHEET 1 OF 3			



025-0000-0254-50 C

# Parts List

FLASH 36 Load Cell - 50,000 lb - 18" Plates

Rev	By	Date	Description
	SMH	05-10-2002	
A	SMH	06-28-2002	ADDED 018-0000-2404 AND 013-0000-339, ADDED SHEET 2, 013-0000-101 WAS 013-0000-033,
B	SMH	07-08-2002	013-0000-0210 was 013-0000-0330
C	DAL	03-28-2009	redesign to shorten height, added -30

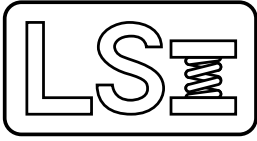
Item	Qty	Part Number	Rev	Part Name	PCB Location	Part Length
1	1	018-0000-2321-00	B	Load Cell Base Plate 18" UT 36 50,000		in.
2	9	013-0000-0328-00		1-12 X 3 1/2 Hex Bolt (grade 8)		in.
3	1	025-1000-0565-05		3 LOAD CELL ASSEMBLY, SMART CELL, 50,000 LB		in.
4	3	018-0000-2293-01	A	UT 36-50,000, Top Load Cell Spacer		in.
5	750	013-2000-0102-00		3/8" DIA. CHROME STEEL BALL - GRADE 25		in.
6	6	013-0000-0020-00		4-40 X 1/4 Button Head Cap Screw		in.
7	1	018-0000-2371-01	A	UT 36-50,000, Load Cell Shroud Plate		in.
8	1	018-0000-2318-00	B	Load Cell Platform 18" UT 36 50,000		in.
9	1	018-0000-2320-01		Load Cell Shroud 18" Plate UT 36 50,000		in.
10	1	018-0000-2298-00	A	UT 36-50,000, THRUST BEARING RETAINER		in.
11	1	018-0000-2294-00	A	UT 36-50,000, BEAMING CONTROL RING		in.
11	1	018-0000-2294-01	A	UT 36-50,000, BEAMING CONTROL RING		in.
11	1	018-0000-2294-02	A	UT 36-50,000, BEAMING CONTROL RING		in.
11	1	018-0000-2294-03	A	UT 36-50,000, BEAMING CONTROL RING		in.
11	1	018-0000-2294-04	A	UT 36-50,000, BEAMING CONTROL RING		in.
11	1	018-0000-2294-05	A	UT 36-50,000, BEAMING CONTROL RING		in.
11	1	018-0000-2294-06	A	UT 36-50,000, BEAMING CONTROL RING		in.
11	1	018-0000-2294-07	A	UT 36-50,000, BEAMING CONTROL RING		in.
11	1	018-0000-2294-08	A	UT 36-50,000, BEAMING CONTROL RING		in.
12	54	013-0000-0019-00		4-40 X 1/2 FHSCS		in.
13	1	018-0000-2319-00	B	Load Cell Support Plate UT 36 50,000		in.
14	3	018-0000-2297-01	A	UT 36-50,000, OVERLOAD STOP		in.
15	6	013-0000-0210-00		1/2-13 X 4 SHCS		in.
16	1	018-0000-2299-00	B	UT 36-50,000, THRUST BEARING PLATE		in.
17	1	013-2000-0253-00		THRUST BEARING		in.
18	6	013-0000-0483-00		1/2-13 X 2-3/4 SHCS		in.
19	1	018-0000-2404-01	A	UT 36-50,000, Extension Over Load Stop		in.
20	3	013-0000-0101-00		3/8-16 X 2 1/4 SHCS		in.
21	7	018-0000-0547-00	A	ANGLE BRACE (H.D.) LOAD CELL (INNER)		in.
22	15	013-0000-0045-00		6-32 X 3/8 BHSCS		in.

Approved by: 

Date: March 28, 2009

**SEE ATTACHED DRAWING**





**025-0000-0254-50 C**

# Parts List

FLASH 36 Load Cell - 50,000 lb - 18" Plates

Rev	By	Date	Description
	SMH	05-10-2002	
A	SMH	06-28-2002	ADDED 018-0000-2404 AND 013-0000-339, ADDED SHEET 2, 013-0000-101 WAS 013-0000-033,
B	SMH	07-08-2002	013-0000-0210 was 013-0000-0330
C	DAL	03-28-2009	redesign to shorten height, added -30

Item	Qty	Part Number	Rev	Part Name	PCB Location	Part Length
23	6	013-3000-0025-00		Cable Clamp, 1/2" Dia.		in.
24	4	013-0000-0021-00		6-32 X 5/8 BHSCS		in.
25	2	013-0000-0369-00		4-40 X 1/8 BHSCS Black Oxide		in.
26	1	018-0000-1244-01	B	Load Cell Connector Mounting 9 Pin		in.
27	4	013-0000-0234-00		4-40 X 5/8 BHSCS		in.
28	1	018-0000-0803-00	C	Load Cell Cover Plate		in.
29	2	018-0000-0937-00	B	Load Cell Angle Brace		in.
30	4	012-0000-0011-00		Nylon spacer		in.
31	7	013-0000-0016-00		4-40 X 3/8 BHSCS		in.
32	1	017-0000-0250-00		Load cell Index Label		in.

Approved by:

Date:

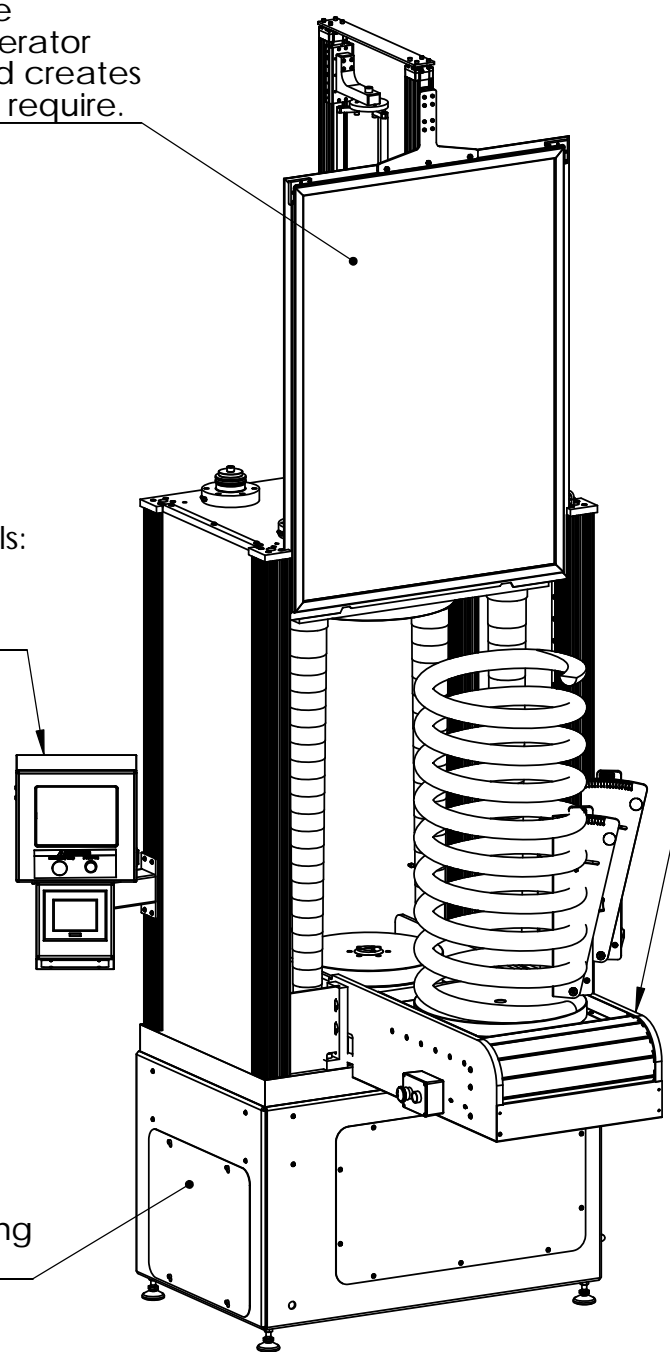
March 28, 2009

**SEE ATTACHED DRAWING**

Safe, quick and effective. The loading door of the FLASH 36 keeps the operator safe, loading quick and creates the effective shield we require.

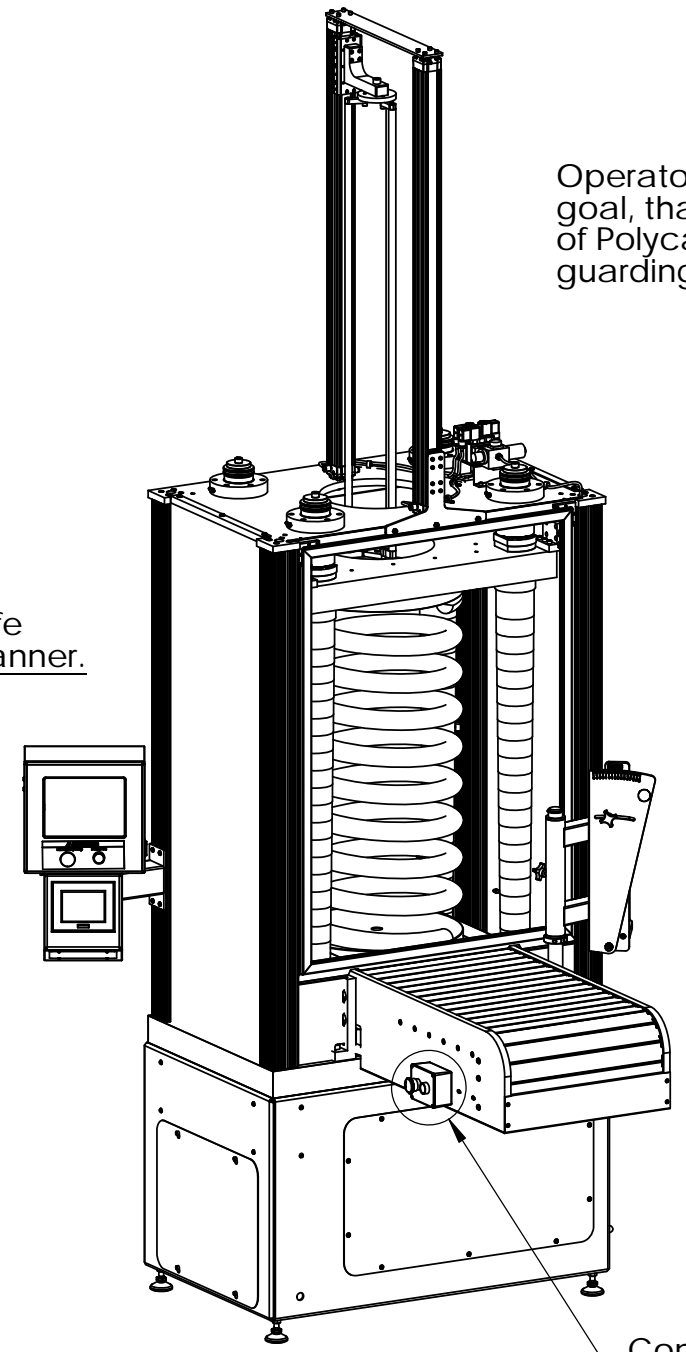
Intuitive Operator Controls: Touch screens make FLASH 36 procedures stress free and efficient.

Stable and strong. Heavy duty steel base creates a sturdy building block for the FLASH 36



FLASH 36 Spring Tester Loading Position

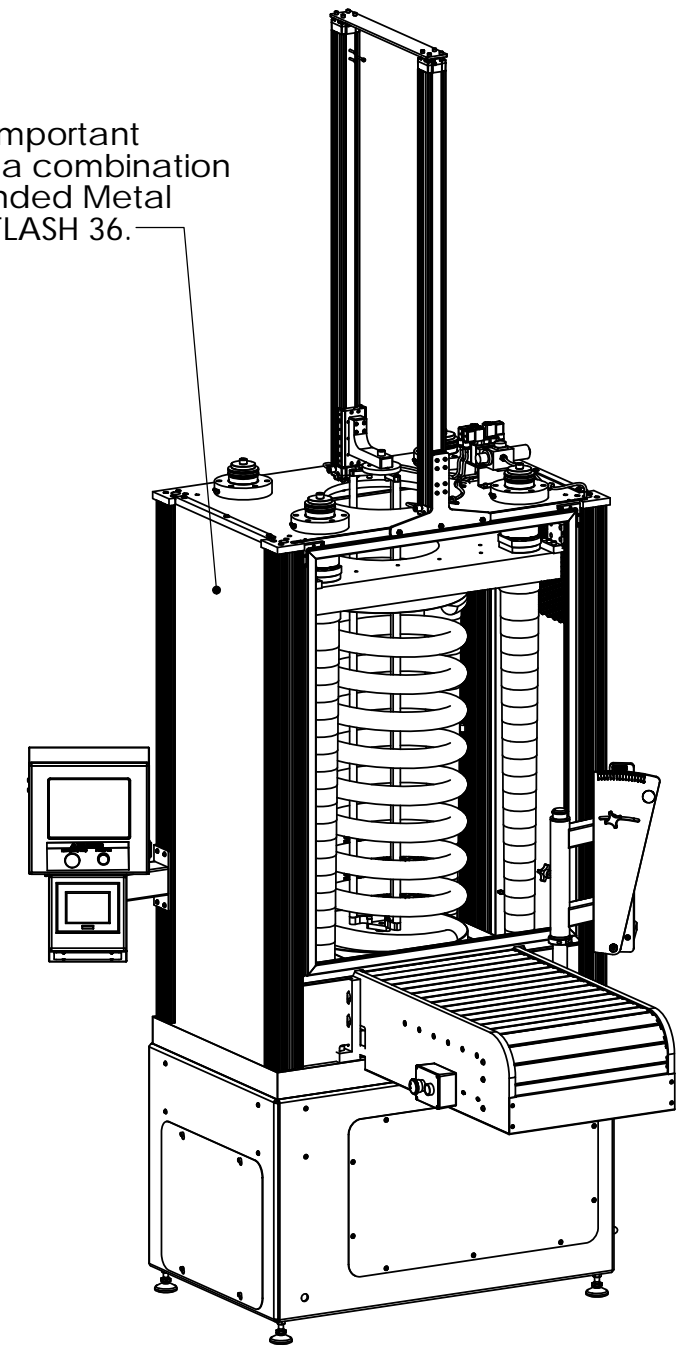
Labor saving Spring Loader aids the operator in working in a safe and proficient manner.



FLASH 36 Spring Tester Testing Position Thru Rod assembly retracted.

Operator Safety is our most important goal, that is why we include a combination of Polycarbonate and Expanded Metal guarding on all sides of the FLASH 36.

Convenient E-stop and Start up controls.



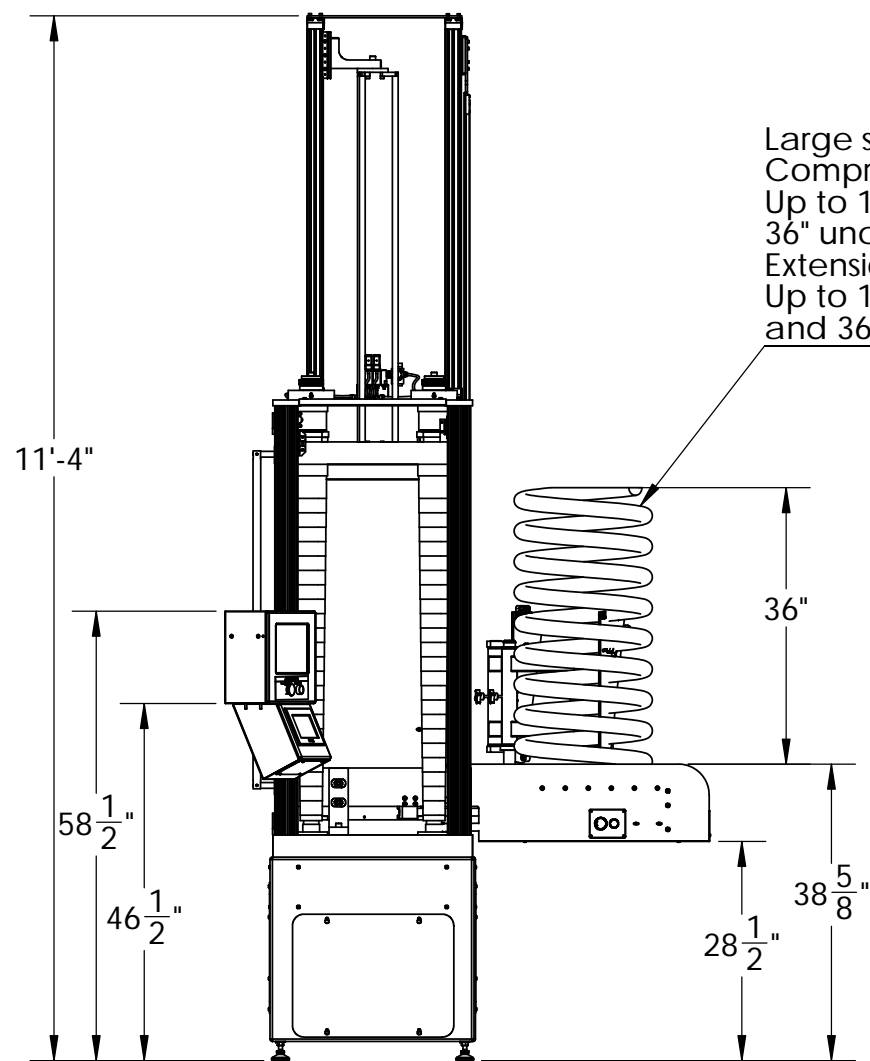
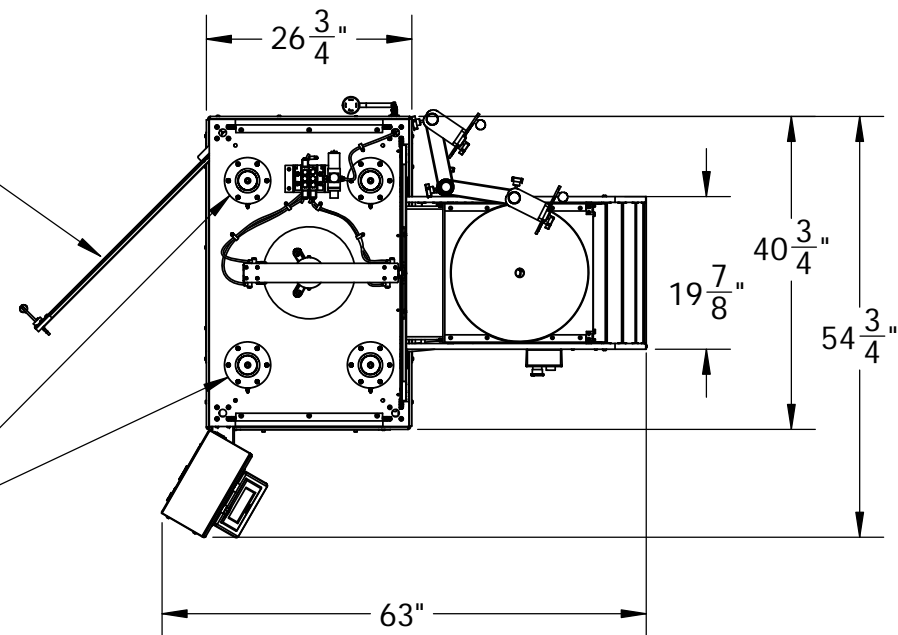
FLASH 36 Spring Tester Testing Position

Blue powder coating and black oxide or anodizing of all parts make the FLASH 36 look as stunning as it performs. Limit switches on gates, loader and Thru Rod assembly to provide that extra safety for the operator and the equipment.

		<b>LARSON SYSTEMS INC.</b>	
		10073 Baltimore St. NE PH. 763-780-2131 Mpls., MN 55449 FAX. 763-780-2182	
APPROVALS	DATE	FLASH 36 with Spring Loader DWG. NO. 025-0000-0752-01A	
DRAWN RRS	5/22/12		
APP.			
APP.			
		SCALE: NONE	SHEET 1 OF 9

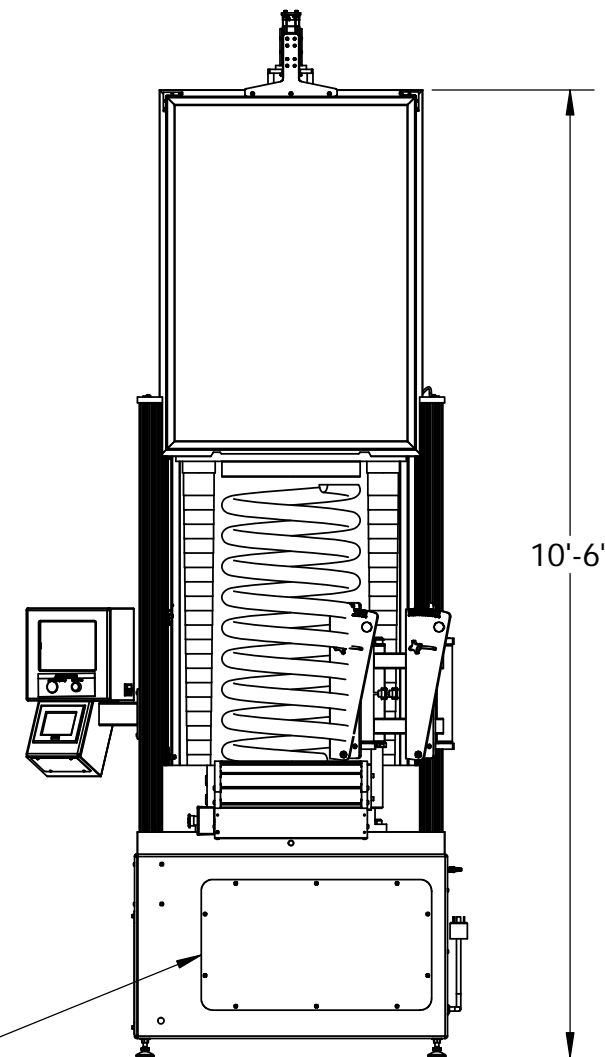
Convenient Swinging Access Door creates easy access to tester for maintenance and cleaning.


Stability = Accuracy  
Four screw drives on the FLASH 36 create the stability and accuracy you require.



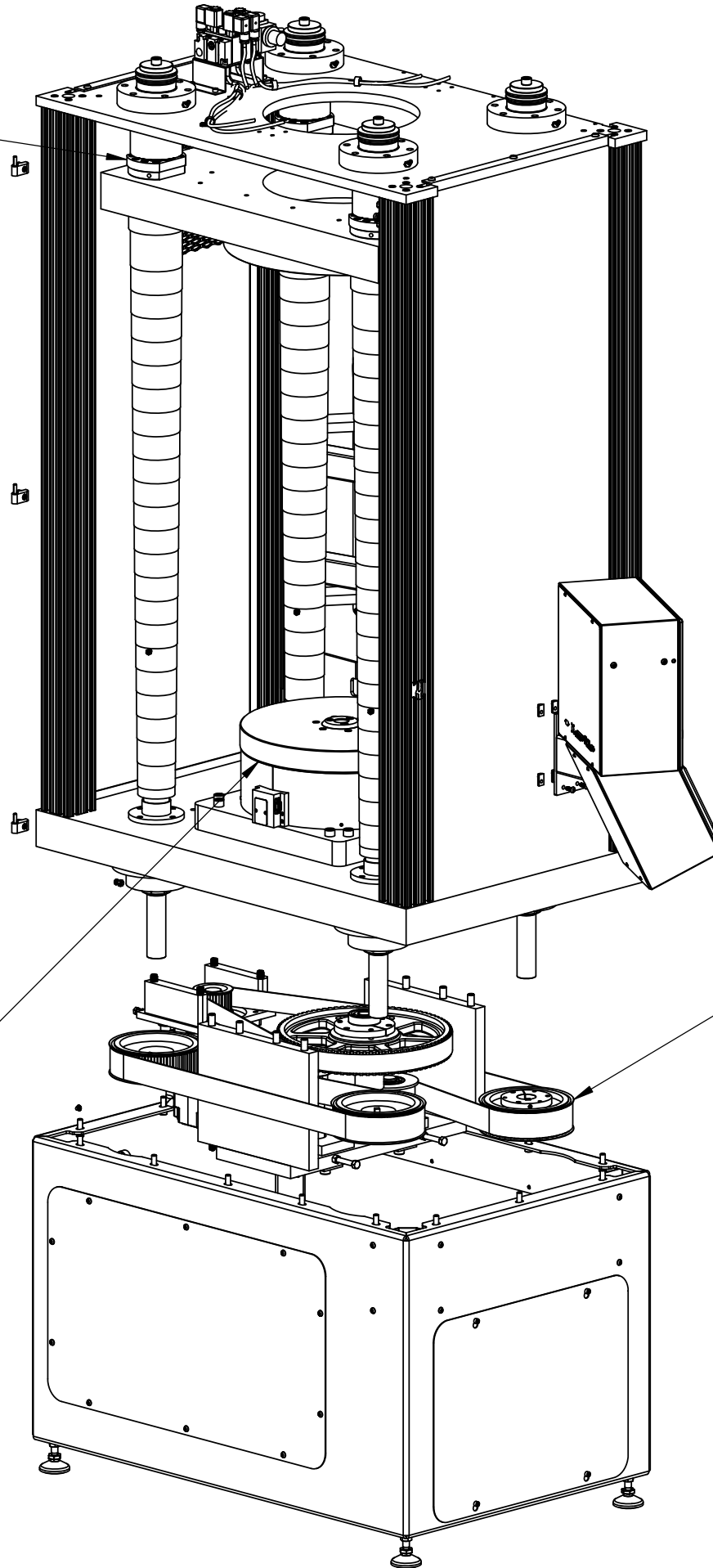
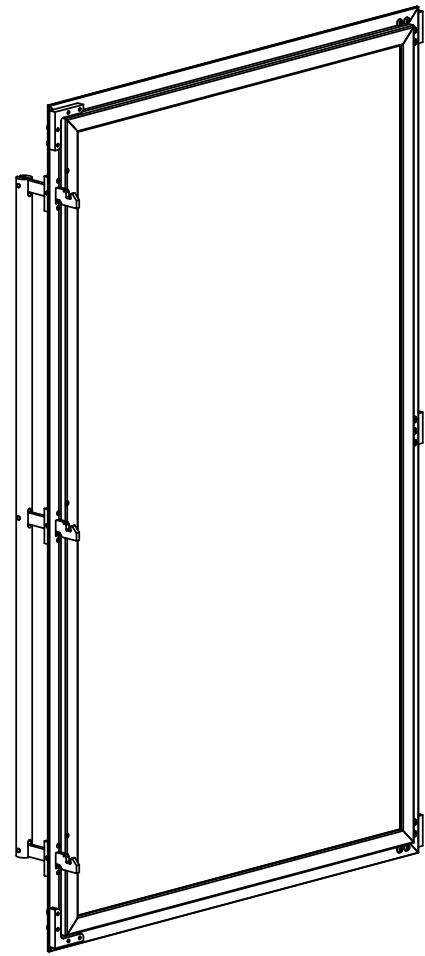
Large spring capacity:  
Compression springs:  
Up to 18" diameter and  
36" uncompressed length .  
Extension springs:  
Up to 18" diameter  
and 36" extended length.

Access panels on three sides make maintenance straight forward.



		<b>LARSON SYSTEMS INC.</b> 10073 Baltimore St. NE PH. 763-780-2131 Mpls., MN 55449 FAX. 763-780-2182	
		APPROVALS	DATE
DRAWN	RRS	05-22-12	FLASH 36 with Spring Loader
APP.		B	DWG. NO. 025-0000-0752-01A
APP.			SCALE: NONE
			SHEET 2 OF 9

Pre-loaded ball nuts and pre-tensioned ball screws are just two more details which increase accuracy and make the FLASH 36 the tester of choice.

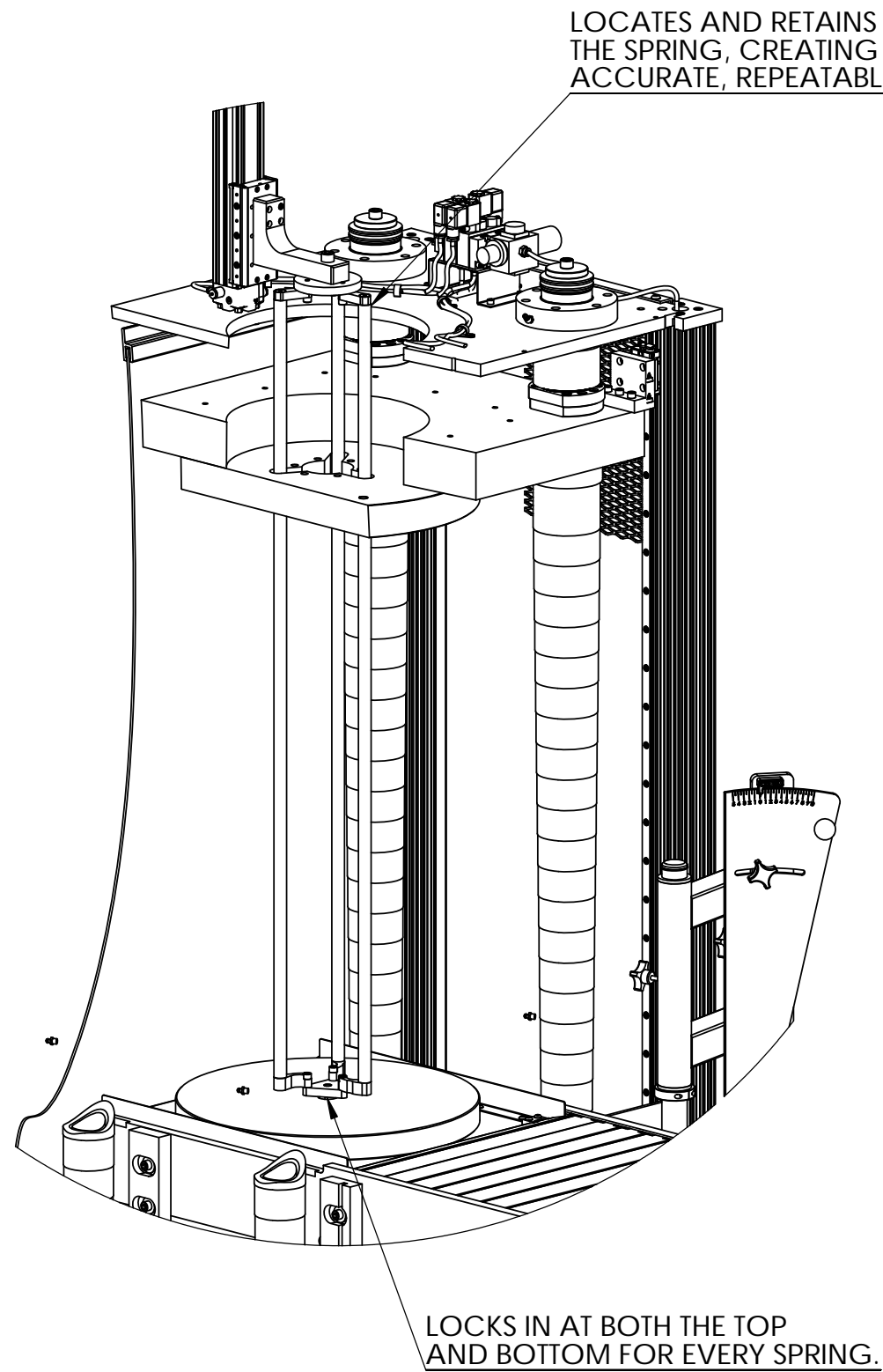


High Capacity Load Cell:  
The FLASH 36 was created to measure loads from under 1,000 lbs. up to 50,000 lbs. It continually surpasses expectations with heavy loads.

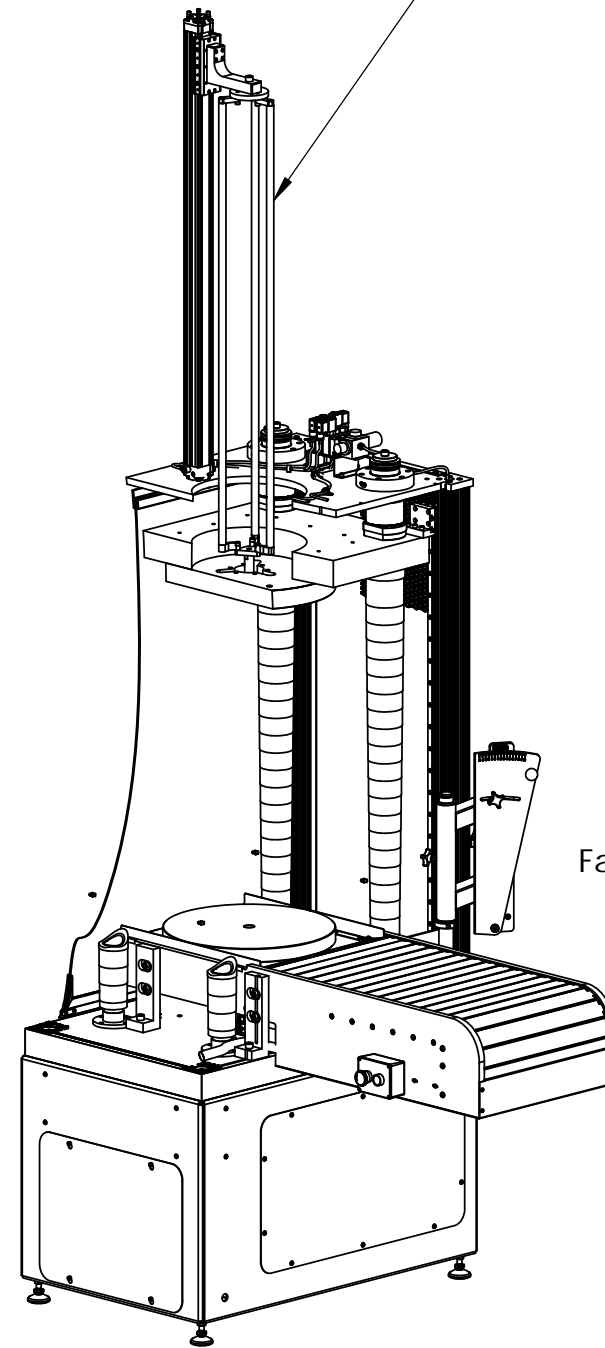
Heavy duty, double reduction drive creates the power, accuracy and dependability the FLASH 36 provides.

		<b>LARSON SYSTEMS INC.</b>	
		10073 Baltimore St. NE PH. 763-780-2131 Mpls., MN 55449 FAX. 763-780-2182	
APPROVALS	DATE	<i>FLASH 36 with Spring Loader</i>	
DRAWN RRS	05-22-12		
APP.		<b>B</b>	DWG. NO. 025-0000-0752-01A
APP.			SCALE: NONE

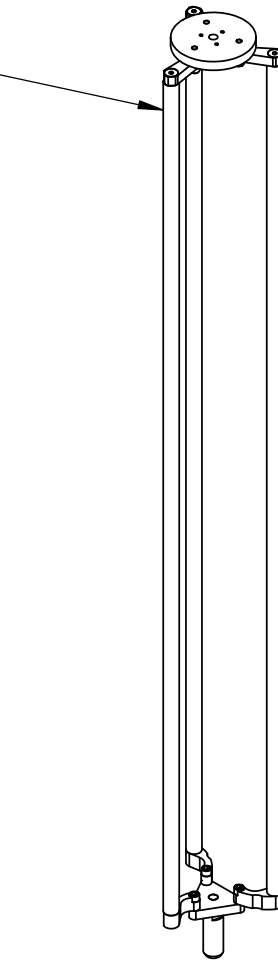
**OUR THRU ROD ASSEMBLY:**



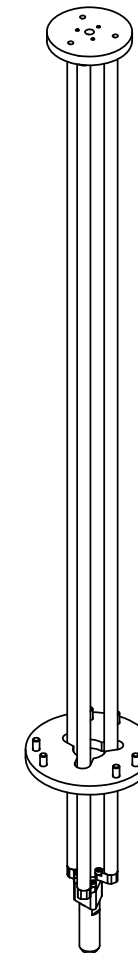
INTERCHANGEABLE AND ADJUSTABLE, SAVING TIME, NO MATTER THE SIZE OF SPRING.



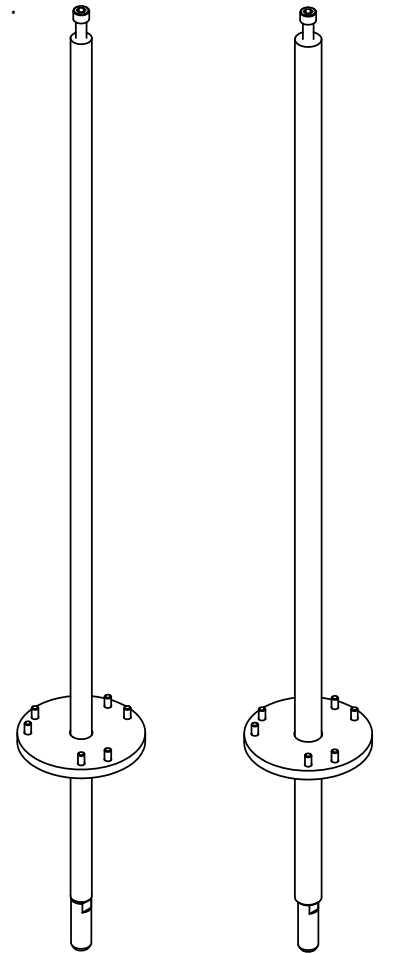
PREPARED FOR ANY SPRING WITH AN INSIDE DIAMETER UP TO 6.5".



Facilitates inside diameters from 3"-6.5"



Facilitates inside diameters from 1.5"-3"



Facilitates inside diameter of 1" and 1.25"



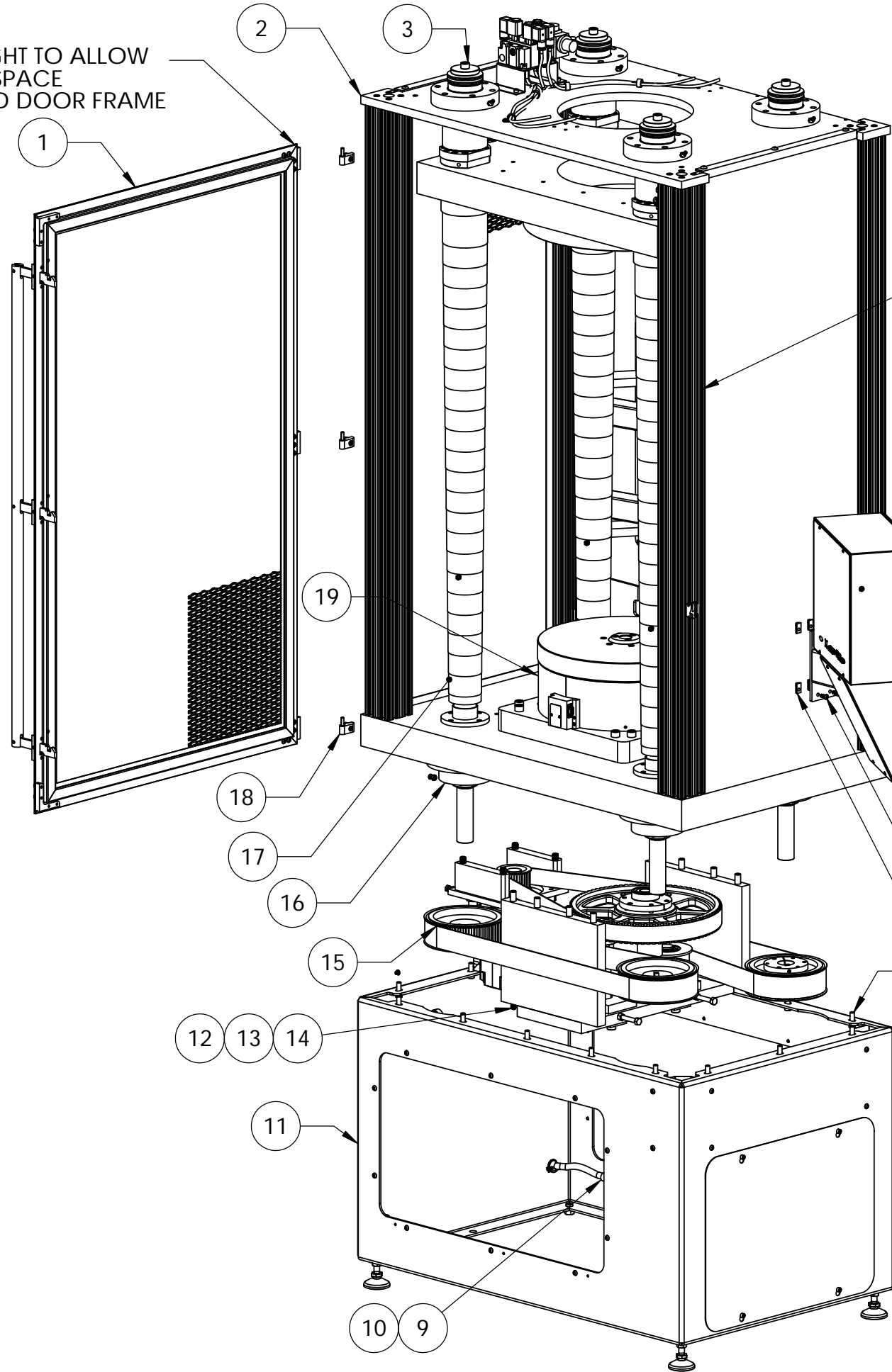
**LARSON SYSTEMS INC.**

10073 Baltimore St. NE PH. 763-780-2131  
Mpls., MN 55449 FAX. 763-780-2182

APPROVALS	DATE	FLASH 36 with Spring Loader
DRAWN RRS	5-22-12	
APP.		B DWG. NO. 025-0000-0752-01A
APP.		SCALE: NONE
		SHEET 4 OF 9

SET HEIGHT TO ALLOW  
EQUAL SPACE  
AROUND DOOR FRAME

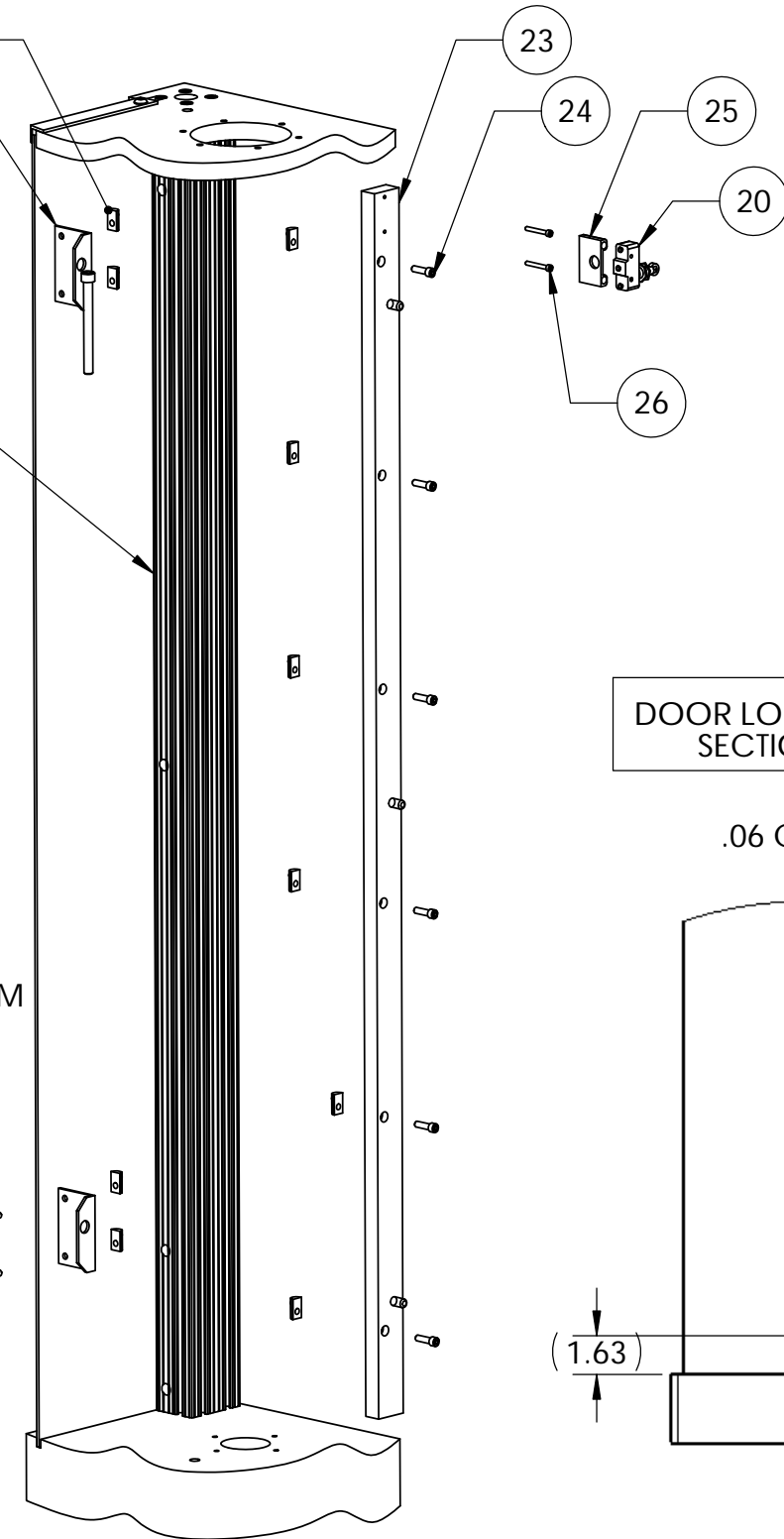
DOOR STOP/PLATFORM AND DOOR LIMIT SWITCHES



SAME LEG.

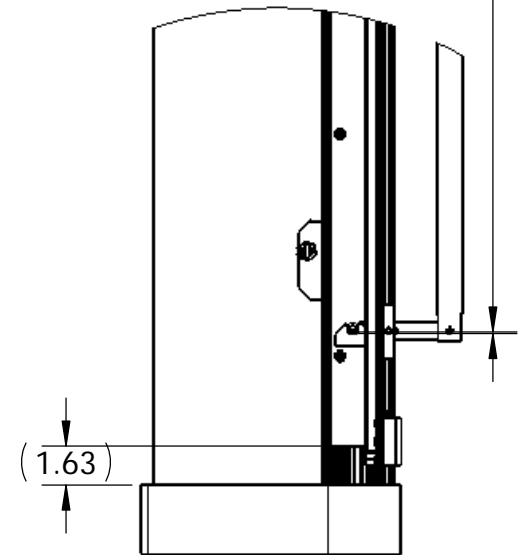
LOCATE SWITCH AT THE TOP  
OF THE PLATFORM MOUNT,  
SET AT THE UPPER LIMIT

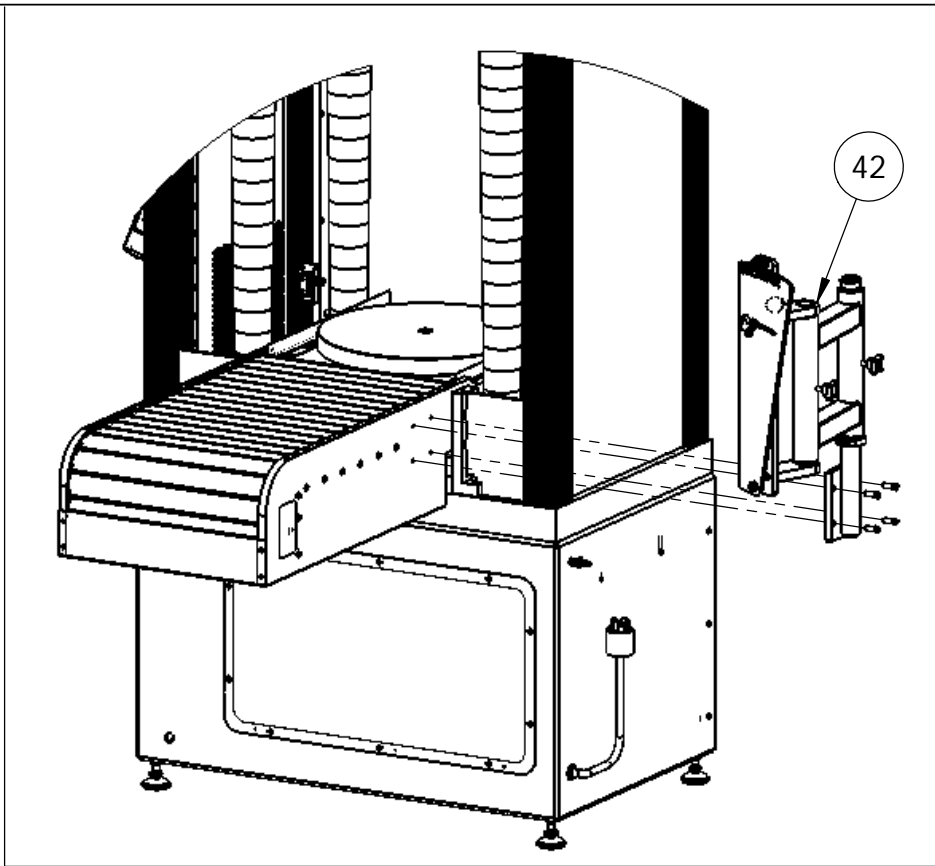
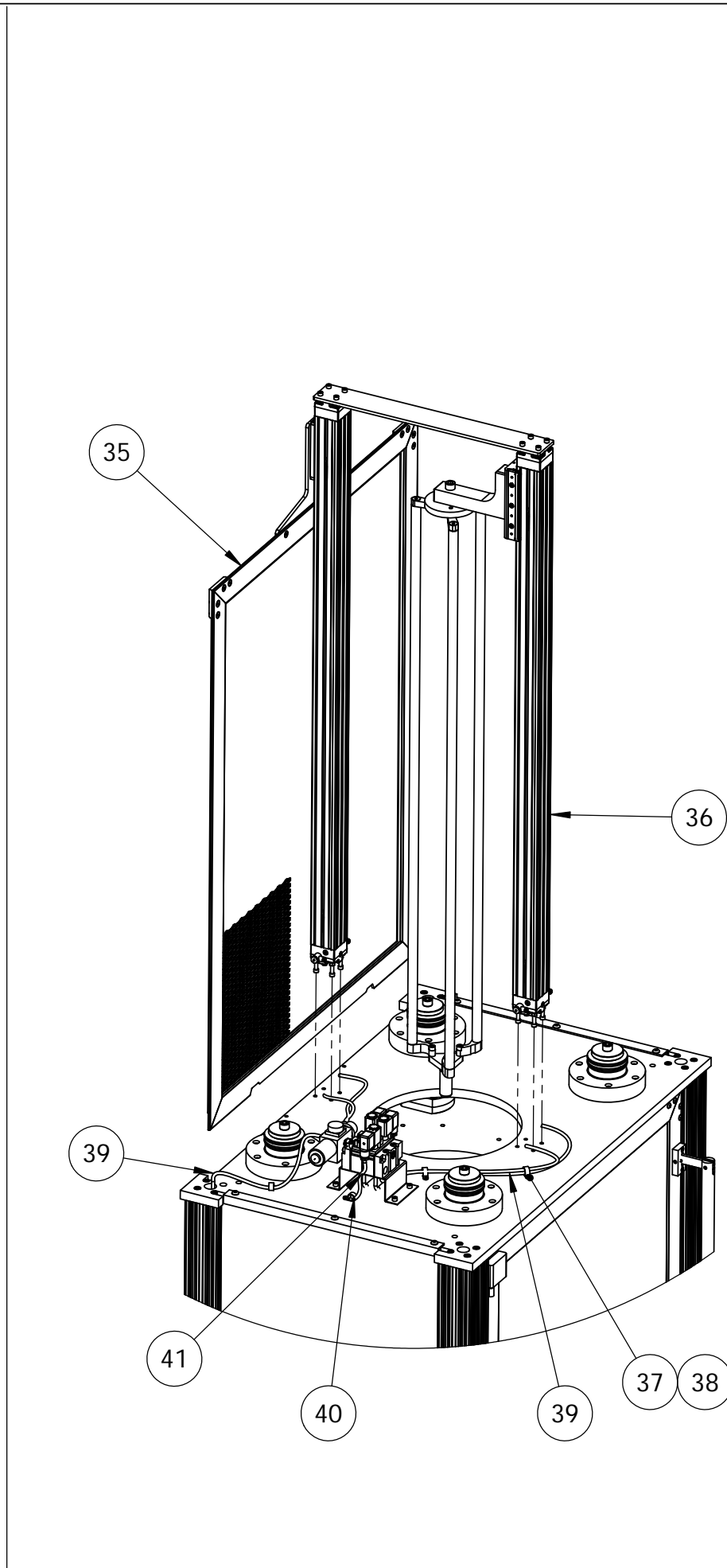
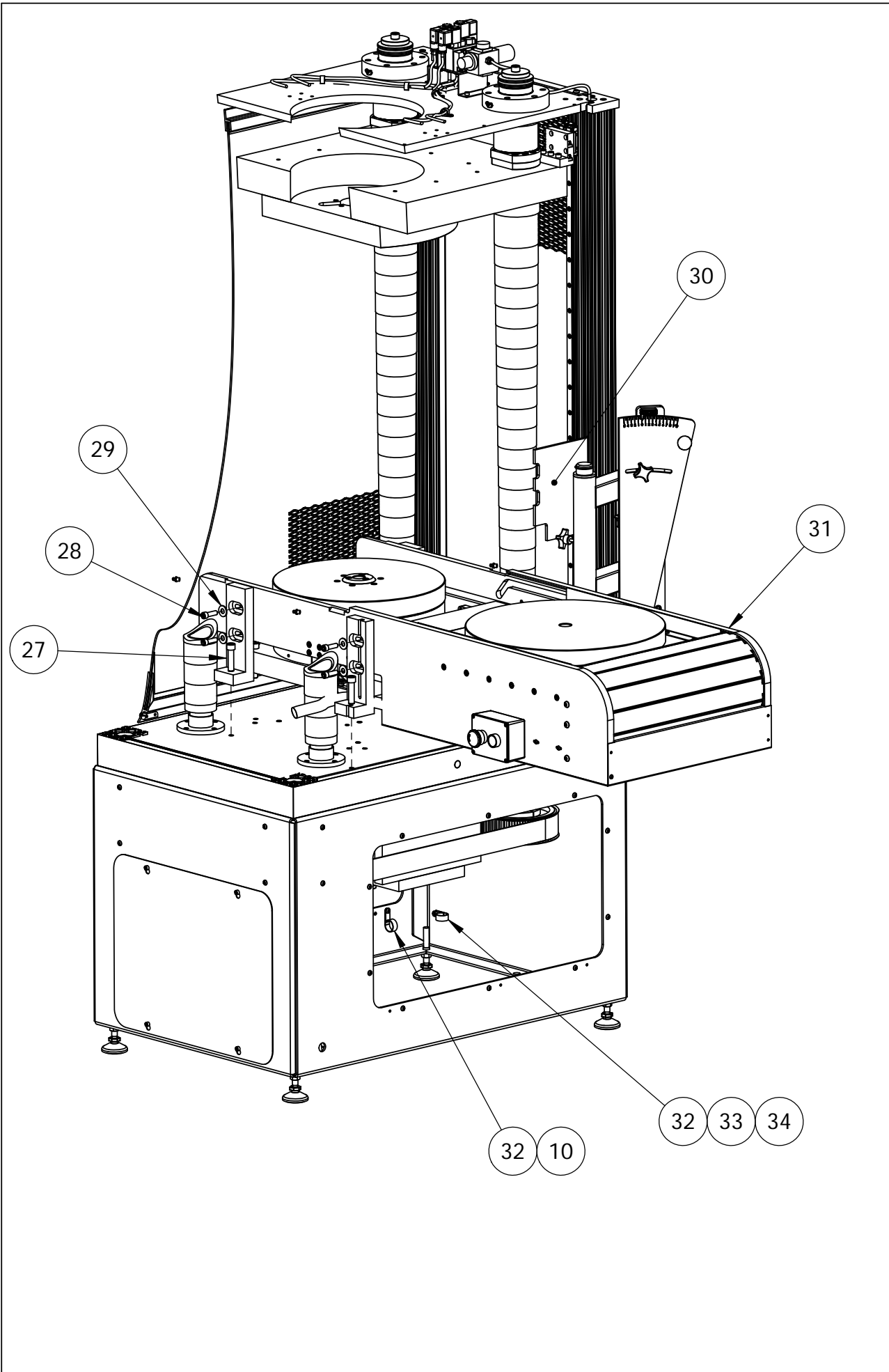
LOCATE SWITCH AT THE BOTTOM  
OF THE PLATFORM MOUNT,  
SET FOR THE LOWER LIMIT OF THE  
LOAD CELL ASSEMBLY  
THAT IS INSTALLED.



DOOR LOCK POSITION  
SECTION VIEW

.06 CLEARANCE

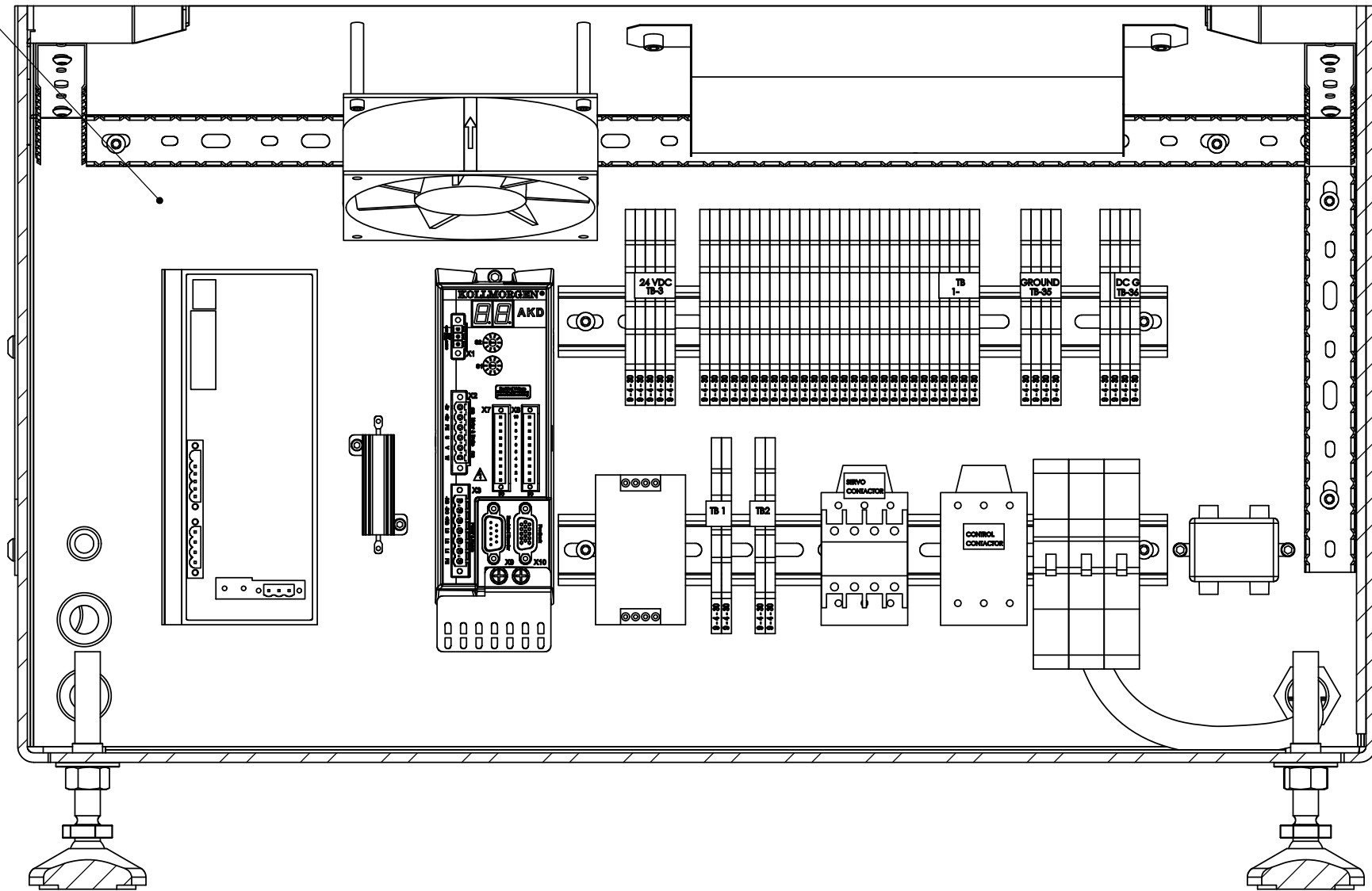




		<b>LARSON SYSTEMS INC.</b> 10073 Baltimore St. NE PH. 763-780-2131 Mpls., MN 55449 FAX. 763-780-2182	
		APPROVALS DRAWN RRS APP. APP.	DATE 05-22-12
		SCALE: NONE	SHEET 6 OF 9

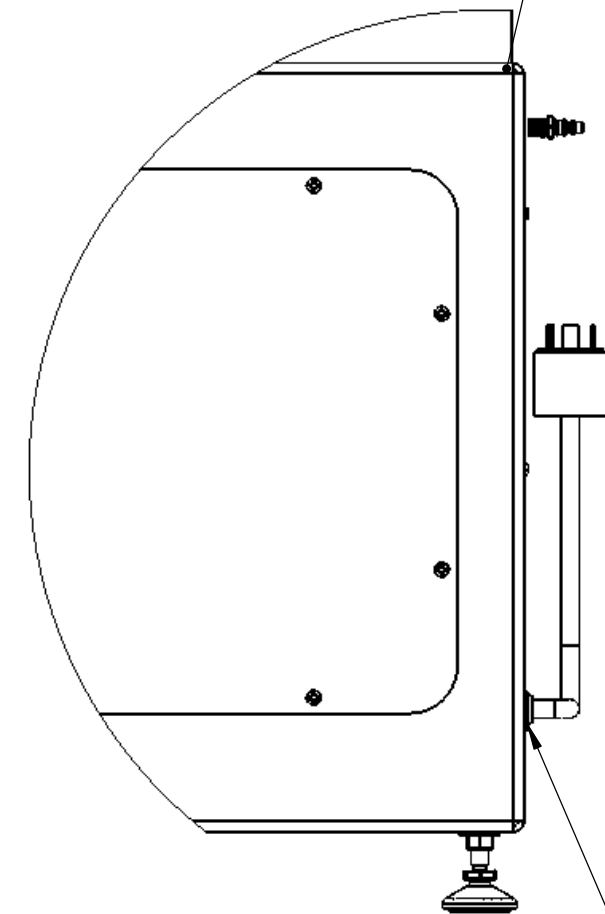
REV	DATE	DESCRIPTION	DRW	APP

43




44

45



46

		<b>LARSON SYSTEMS INC.</b> 10073 Baltimore St. NE PH. 763-780-2131 Mpls., MN 55449 FAX. 763-780-2182	
		APPROVALS DRAWN RRS APP.	DATE 5-22-12
APP.		B	REV: - SHEET 7 OF 9





025-0000-0752-01 A

# Parts List

FLASH 36 Main Assembly (Ø18" x 36" tall) For Auto

Rev	By	Date	Description
	RRS	04-04-2012	
A	RRS	07-12-2012	Added items 35 through 46, Replaced 9, 10 & 31. Renumbered assembly.

Item	Qty	Part Number	Rev	Part Name	PCB Location	Part Length
1	1	025-0000-0753-01	A	FLASH 36 - Door Panel with expanded metal guard		in.
2	1	025-0000-0754-01	A	FLASH 36 - Upper Assembly with Auto Loader		in.
3	4	025-0000-0502-01	A	Flash 36-50,000 Upper Ballscrew/ Bearing Assembly		in.
4	1	025-0000-0886-00	A	FLASH/Touch screen assem. FLASH 36		in.
5	4	013-0000-0093-00		1/4-20 X 5/8 BHSCS		in.
6	14	013-1000-0086-00		T-Nut w/Ball Spring 1/4-20		in.
7	16	013-0000-0167-00		3/8-16 X 1 SHCS		in.
8	16	013-2000-0100-00		3/8" FLAT WASHERS		in.
9	3	013-3000-0048-00		Cable Clamp, 5/8" Dia. 9/32"mounting hole		in.
10	6	013-0000-0566-00		1/4-20 X 1/4 BHCS		in.
11	1	025-0000-0755-00	A	FLASH 36 - Lower Assembly		in.
12	1	013-3000-0021-00		Cable Clamp, 1/4" Dia.		in.
13	1	013-0000-0029-00		8-32 X 1/2 Button Head Cap Screw		in.
14	1	013-0000-0009-00		8-32 Hex Machine Screw Nut, Zinc		in.
15	Ref	025-0000-0756-00	A	FLASH 36 - 35k Drive Assembly		in.
16	4	025-0000-0502-00	C	Flash 36-50,000 Lower Ballscrew/ Bearing Assembly		in.
17	4	025-0000-0502-02	A	Flash 36-50,000 Ballscrew Covers/ Assembly		in.
18	3	012-0000-0043-00		T-Slot Lift Off Hinge		in.
19	Ref	025-0000-0885-10	A	10,000 lb load cell, with spring loader		in.
20	Ref	007-0000-0052-00		Roller Plunger, Limit Switch		in.
21	4	013-0000-0105-00		1/4-20 X 1/2 BHSCS		in.
22	2	018-0000-3147-00		LS Bracket - T-Slot		in.
23	1	018-0000-3130-00	B	Door Stop, FLASH 36-50000		in.
24	6	013-0000-0202-00		1/4-20 X 7/8 SHCS		in.
25	1	018-0000-3146-00	A	LS Door Bracket		in.
26	2	013-0000-0092-00		8-32 X 1-1/4 SHCS		in.
27	4	013-0000-0554-00		1/2-13 x 2.0 SHCS		in.
28	8	013-0000-0100-00		3/8-16 X 1 1/4 SHCS		in.
29	8	013-2000-0100-00		3/8" FLAT WASHERS		in.
30	2	018-0000-3414-00		Safety guard, Vertical door, Flash 36 with spring loader		in.

Approved by: \_\_\_\_\_

Date: \_\_\_\_\_

**SEE ATTACHED 7 DRAWINGS**



025-0000-0752-01 A

# Parts List

FLASH 36 Main Assembly (Ø18" x 36" tall) For Auto

Rev	By	Date	Description
	RRS	04-04-2012	
A	RRS	07-12-2012	Added items 35 through 46, Replaced 9, 10 & 31. Renumbered assembly.

Item	Qty	Part Number	Rev	Part Name	PCB Location	Part Length
31	1	025-0000-0882-00	A	Spring Loader, FLASH 36		in.
32	7	013-3000-0045-00		Cable Clamp 1" Dia.		in.
33	4	013-0000-0093-00		1/4-20 X 5/8 BHSCS		in.
34	4	013-0000-0044-00		1/4-20 Hex Nut		in.
35	1	025-0000-0883-01	A	Pneumatic assem. Vert. Sliding Gate- FLASH 36, Auto		in.
36	1	025-0000-0265-05	B	1"-6.5" ID Adjustable Thru-Rod Assembly for FLASH 36		in.
37	4	013-3000-0035-00		Cable Clamp, 5/8 Dia.		in.
38	6	013-0000-0026-00		10-24 X 1/2 BHSCS		in.
39	4	019-0000-0131-00		TUBING 1/4" OD, BLACK		24 in.
39	1	019-0000-0131-00		TUBING 1/4" OD, BLACK		76 in.
40	2	013-3000-0025-00		Cable Clamp, 1/2" Dia.		in.
41	1	025-0000-0890-00		Valve assembly, FLASH 36		in.
42	1	025-0000-0894-00		ASTM Squareness Tester		in.
43	1	025-1000-0643-00	B	ELECTRONICS LAYOUT, FLASH 36		in.
44	1	019-0000-0187-00		1/4" NPTF, 1/4" MALE QUICK DISCONNECT		in.
45	1	019-0000-0191-00		Bulkhead adapter, 1/4 NPT to 1/4" tube		in.
46	1	011-0000-0046-00		screw connector- 1/2"		in.
47	1	025-2000-0165-08	C	Schematic, Flash 36-X000, Attached computer 240		in.
48	1	060-6000-0114-00		FLASH : System Image Creation Letter		in.

Approved by: \_\_\_\_\_

Date: \_\_\_\_\_

**SEE ATTACHED 7 DRAWINGS**



**Larson Systems Inc.**  
10073 Baltimore Street NE  
Minneapolis, MN 55449-4425  
[www.larsonsystems.com](http://www.larsonsystems.com)

763-780-2131  
1-877-780-2131  
Fax: 763-780-2182  
[info@larsonsystems.com](mailto:info@larsonsystems.com)

