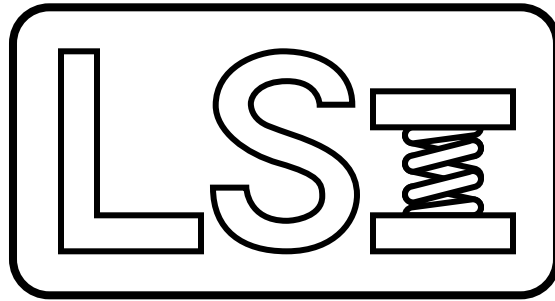


Larson Systems Inc.



DHT Parts List

050-0000-0025-00

Digital Hand Tester - 2 lb





050-0000-0025-00 J
DHT - 2 lb

Parts List

| Rev | By | Date | Description |
|-----|-----|------------|--|
| F | SMH | | 025-1000-0280-01 was 011-0000-0009-00, added 025-0000-0488-00, now on Excel |
| G | SMH | | 025-0000-0185-00 was 025-0000-0185-01 |
| H | MDL | 11-05-2002 | Added 025-6000-0004-00, cleared options |
| J | MDL | 07-14-2004 | Changed 025-1000-0280-01 to 025-1000-0396-00 and referenced it instead of calling quantity. Also added 025-6000-0004-00 (again?) and 060-2000-0015-01. |

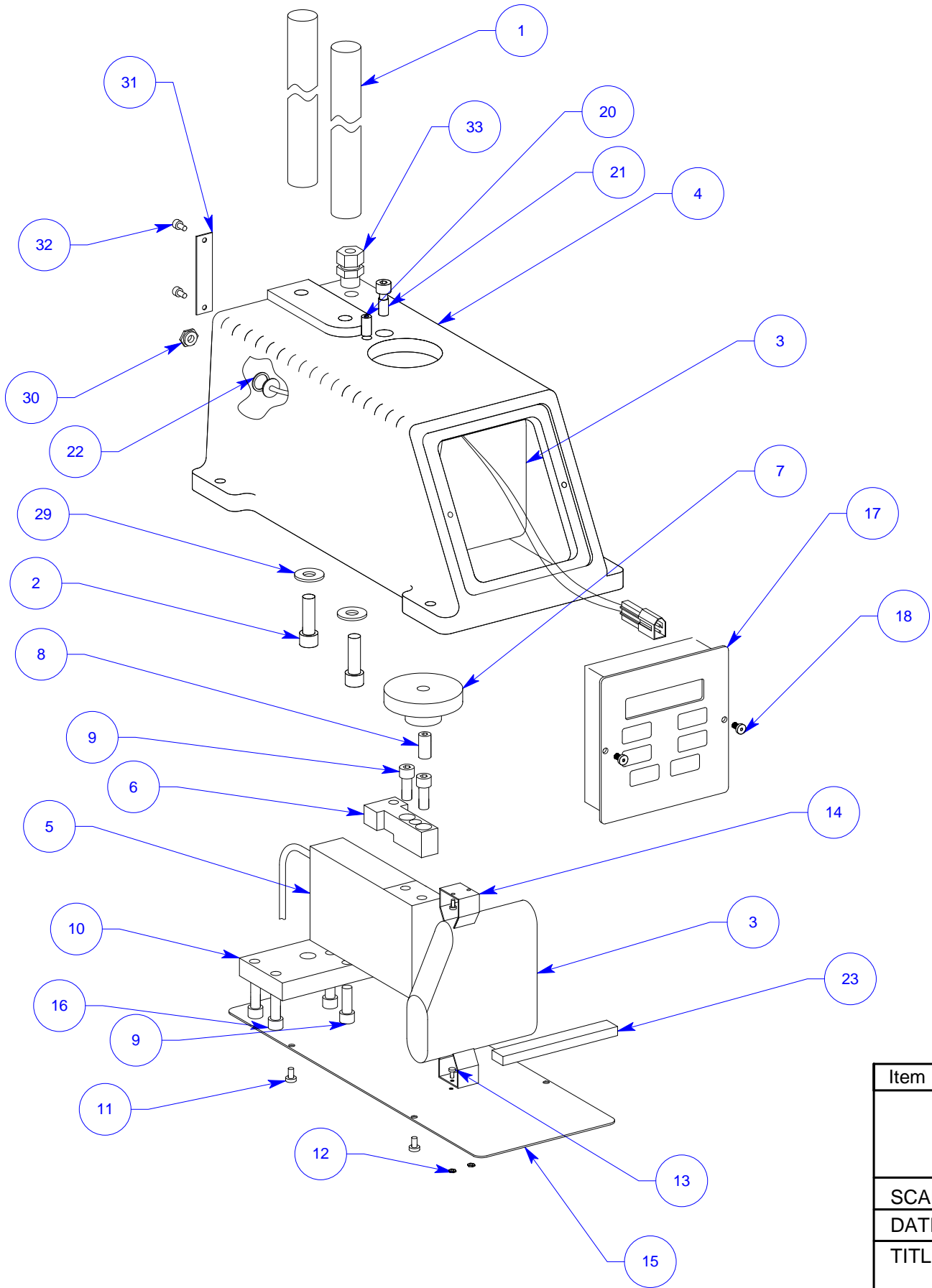
| Item | Qty | Part Number | Rev | Part Name | PCB Location | Part Length |
|------|-----|------------------|-----|---|--------------|-------------|
| 1 | ref | 025-1000-0396-00 | | Power Supply, 100-240 VAC 50-60 Hz (USA Plug) | | in. |
| 2 | 1 | 025-0000-0260-00 | K | Lower Assembly DHT 2 lb | | in. |
| 3 | 1 | 025-0000-0185-00 | G | Upper Assembly 6" DHT | | in. |
| 4 | 1 | 060-1000-0025-00 | K | User Manual - ECT / CDHT / FDHT / DHT / CST | | in. |
| 5 | 1 | 060-0000-0074-00 | A | Tester Packet Forms | | in. |
| 6 | 1 | 059-0000-0016-00 | E | Hand Tester Shipping Box & Materials | | in. |
| 7 | 1 | 060-2000-0015-01 | | Parts List - DHT 2 lb | | in. |
| 8 | 1 | 025-6000-0004-00 | | Sticker Assembly - DHT | | in. |

Refer to actual order form to determine power supply.

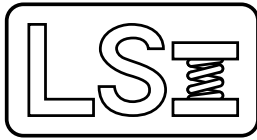
Approved by: 

Date: July 19, 2004

| REV | DATE | DESCRIPTION | DRW | APPR |
|-----|------|-------------|-----|------|
| | | SEE SHEET 2 | | |
| | | | | |



| Item | Qty | Description | LSI P/N |
|----------------------------------|-----|------------------------|-------------------|
| LARSON SYSTEMS INC. | | | |
| SCALE: NONE | | TOLERANCE: .XX +/- .01 | DRW. BY: DD |
| DATE: 9/7/95 | | .XXX +/- .005 | APPR. BY: |
| TITLE: DHT 2 lbs, LOWER ASSEMBLY | | | |
| MATERIAL: | | SHEET 1 OF 2 | DRAWING NUMBER |
| FINISH: | | B | 025-0000-0260-00K |



025-0000-0260-00 K

Lower Assembly 2 lb

Parts List

| Rev | By | Date | Description |
|-----|-----|------------|--|
| G | DD | 02-01-1997 | #29 WAS 13-2-56 IS 18-0-1514 |
| H | DD | 03-01-1997 | #2 WAS 13-2-88 IS 13-2-117 |
| J | DD | 06-16-1997 | #22 WAS 13-2-88 IS 13-2-117 |
| K | SMH | 12-11-2002 | #1 WAS 18-0-907-03 IS 18-0-907-01, REM'D #19, #24-#28, #22 13-2-241 WAS 13-2-117, #17 25-0-482-0 WAS 25-0-313, ADDED #30-#33, DRAWING WAS 3 SHEETS |

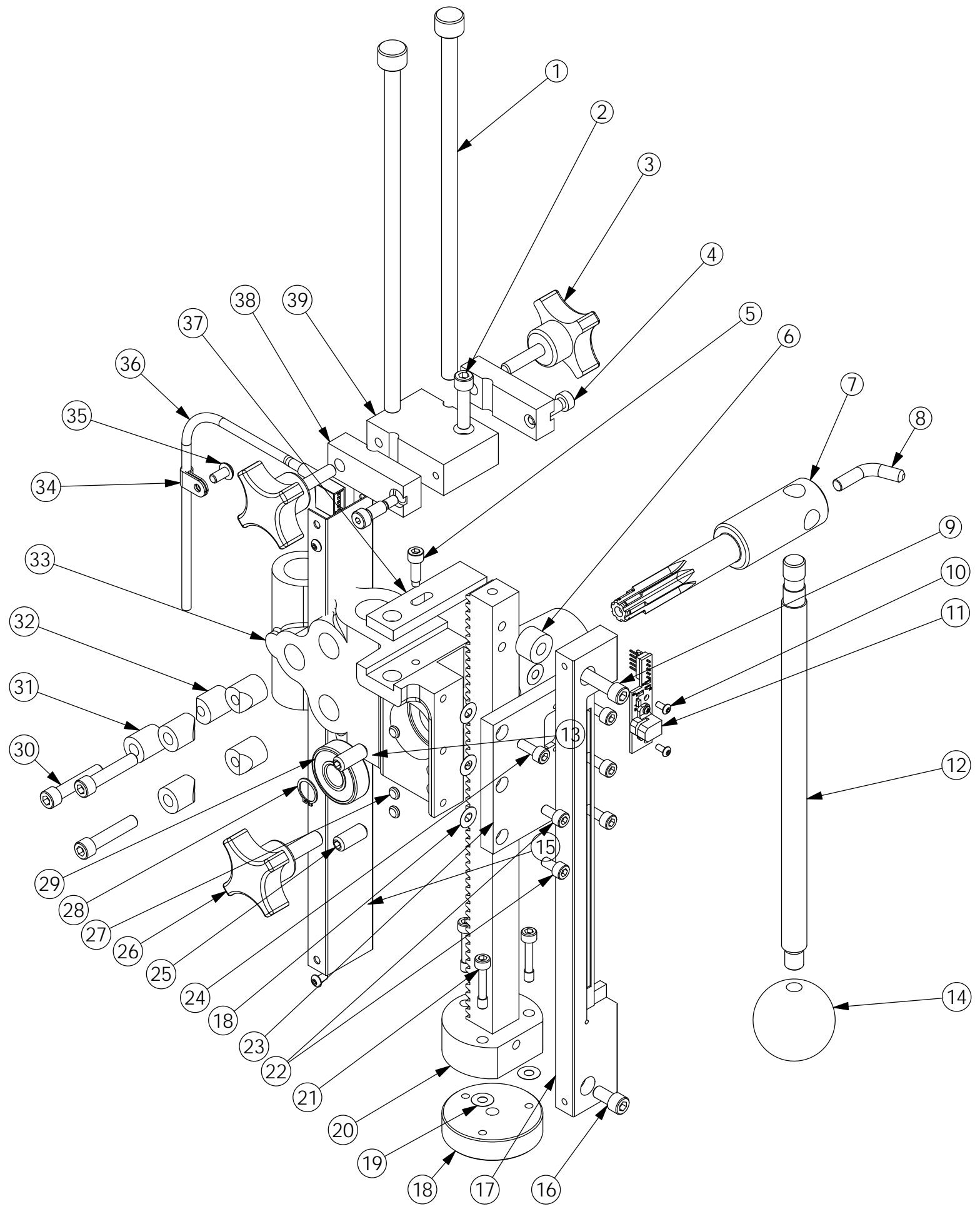
| Item | Qty | Part Number | Rev | Part Name |
|------|-----|------------------|-----|--|
| 1 | 2 | 018-0000-0907-01 | M | 17.200" Support Rods (12" Range) |
| 2 | 2 | 013-0000-0154-00 | | 5/16-18 X 1 1/4 SHCS |
| 3 | 1 | 025-1000-0240-00 | K | Rechargeable Battery |
| 4 | 1 | 018-0000-0871-02 | | DHT Base |
| 5 | 1 | 025-1000-0172-05 | | 2 lbs Load Cell Assembly |
| 6 | 1 | 018-0000-1100-00 | | Lower Platform Mounting Plate |
| 7 | 1 | 018-0000-1101-00 | | Lower Platform |
| 8 | 1 | 013-0000-0132-00 | | 5/16-18 X 5/8 SSS |
| 9 | 4 | 013-0000-0198-00 | | 1/4-20 X 5/8 SHCS |
| 9 | | 013-0000-0182-00 | | 1/4-28 X 5/8 SHCS |
| 9 | | 013-0000-0211-00 | | M6 X 16 SHCS |
| 10 | 1 | 018-0000-0902-02 | | LOAD CELL MOUNTING PLATE (DHT) |
| 11 | 4 | 013-0000-0195-00 | | 6-32 X 1/4 PHMS PHILLIPS |
| 12 | 2 | 013-0000-0185-00 | | 2-56 HEX NUT |
| 13 | 4 | 013-0000-0184-00 | | 2-56 X 3/16PHMS, PHILLIPS |
| 14 | 2 | 011-2000-0002-00 | | KEYSTONE 222/BATT. HOLDER |
| 15 | 1 | 018-0000-0877-00 | | BASE BOTTOM COVER |
| 16 | 4 | 013-0000-0149-00 | | 1/4-28 X 7/8 SHCS |
| 17 | 1 | 025-0000-0482-00 | C | Front Panel Assembly, 2 Line Display (2mv Strain Gage) |
| 18 | 2 | 013-0000-0077-00 | | 6-32 x 1/4 BHSCS |
| 20 | 1 | 013-0000-0194-00 | | 1/4-28 X 1/2 SSS FLAT POINT |
| 21 | 1 | 018-0000-1302-00 | A | COMPRESSION OVERLOAD STOPS |
| 22 | 1 | 013-2000-0241-00 | | Hard Fiber Washer, 5/16" ID x 9/16" OD x 1/64" THK |
| 23 | 1 | 013-7000-0007-00 | | White Foam Tape 3.5' X .5" X .25" |
| 29 | 2 | 018-0000-1514-00 | | WASHER .320 I.D. X .625 O.D. |
| 30 | 1 | 018-0000-2160-00 | | Power Jack Nut |
| 31 | 1 | 018-0000-2014-00 | | 25 PIN COVER PLATE |
| 32 | 2 | 013-0000-0178-00 | | 4-40 X 1/4 SHCS |
| 33 | 1 | 013-3000-0022-00 | | 69915K47 cord grip fitting |


Approved by: 

Date: December 11, 2002

SEE ATTACHED DRAWING

| REV. | DATE | DESCRIPTION | DRW | APPROVED |
|------|------|----------------------------|-----|----------|
| | | Revision list in Filemaker | | |
| | | | | |
| | | | | |



| | | |
|---|----|--|
| UNLESS OTHERWISE SPECIFIED DIMENSIONS ARE IN INCHES TOLERANCES ARE: .XX ± .01 .XXX ± .005 | |  LARSON SYSTEMS INC. 10073 Baltimore St. NE PH. 763-780-2131 Mpls., MN 55449 FAX. 763-780-2182 |
| MATERIAL | - | |
| FINISH | - | APPROVALS DATE DRAWN SMH 9/10/01 APPR. |
| HEAT TREAT | -- | DHT Upper Assembly DWG. NO. B 025-0000-185-00G SCALE: NONE |
| | | SHEET 1 OF 3 |



025-0000-0185-00 G

Upper Assembly 6" DHT

Parts List

| Rev | By | Date | Description |
|-----|-----|------------|--|
| E | SMH | 09-10-2001 | REMOVED OLD SCALE REPLACED WITH NEW ENCODER, ASSEMBLY DONE IN SOLIDWORKS |
| F | SMH | 12-11-2001 | CHANGE SCALE OVER TO 025-0000-484, ADDED OTHER ITEMS DELETED FOR 025-0000-484 |
| G | DAL | 11-03-2012 | Renumbered Balloons, #30 was 013-0000-0098-00 is 013-0000-0065-00, #24 013-0000-0196-00 was 3 ea is 4 ea, #22 013-0000-0192-00 was 3 ea is 2 ea, #36 025-1000-0352-01 was 025-0000-0352-00 |
| | SMH | 09-10-2001 | |

| Item | Qty | Part Number | Rev | Part Name | PCB Location | Part Length |
|------|-----|------------------|-----|--|--------------|-------------|
| 1 | 2 | 018-0000-1063-01 | C | Stop Rods, 8.75 | | in. |
| 2 | 1 | 013-0000-0064-00 | | 1/4-20 X 1 SHCS | | in. |
| 3 | 2 | 013-5000-0059-00 | | 1/4-20 knob | | in. |
| 4 | 2 | 013-0000-0204-00 | | 1/4 X 1/2 SHSS, SHOULDER SCREW 10-24TH | | in. |
| 5 | 1 | 018-0000-1024-00 | B | SHSC REWORK/DHT | | in. |
| 6 | 1 | 018-0000-2222-00 | | ENCODER SPACER | | in. |
| 7 | 1 | 018-0000-0876-00 | A | Stem Pinion | | in. |
| 8 | 1 | 018-0000-2214-00 | A | Handle Lock, 1/4-20 | | in. |
| 9 | 1 | 013-0000-0202-00 | | 1/4-20 X 7/8 SHCS | | in. |
| 10 | 2 | 013-0000-0020-00 | | 4-40 X 1/4 BHCS | | in. |
| 11 | 1 | 025-1000-0351-00 | A | Encoder PCB Assembly | | in. |
| 12 | 1 | 018-0000-0901-00 | C | Handle - 5.84" (2, 10 lb Hand Tester) | | in. |
| 13 | 1 | 018-0000-2217-00 | B | Encoder Cover | | in. |
| 14 | 1 | 013-5000-0029-00 | | Phoenolic Ball Knob | | in. |
| 15 | 4 | 013-0000-0077-00 | | 6-32 X 1/4 BHCS | | in. |
| 16 | 1 | 013-0000-0031-00 | | 1/4-20 X 1/2 SHCS | | in. |
| 17 | 1 | 025-0000-0484-00 | B | Glass Scale Assembly | | in. |
| 18 | 1 | 018-0000-1044-00 | C | 2" DIA Upper Platform | | in. |
| 19 | 9 | 018-0000-0435-01 | C | Shim - 0.195 ID, 0.450 OD, 0.0010 thick | | in. |
| 20 | 1 | 018-0000-1249-06 | P | ECT / CDHT / DHT Gear Rack | | in. |
| 21 | 3 | 018-0000-1732-02 | B | 10-32 Custom Screws for Platform Alignment | | in. |
| 22 | 2 | 013-0000-0192-00 | | 10-32 X 3/8 SHCS | | in. |
| 23 | 1 | 018-0000-2218-00 | B | Front Plate (for LSI Encoder) | | in. |
| 24 | 4 | 013-0000-0196-00 | | 10-32 X 1/2 SHCS | | in. |
| 25 | 2 | 013-0000-0242-00 | | 5/16-18 X 3/4 SSSCPPT | | in. |
| 26 | 1 | 018-0000-2221-00 | A | Rack Lock, 5/16-18 | | in. |
| 27 | 3 | 018-0000-1036-00 | A | Brass Wear Pad | | in. |
| 28 | 1 | 013-2000-0086-00 | | Snap Ring, 5100-46-PP | | in. |
| 29 | 1 | 013-2000-0080-00 | | Bearing, Hand Tester Housing | | in. |
| 30 | 3 | 013-0000-0065-00 | | 1/4-20 X 1 1/4 SHCS | | in. |

Approved by: _____

Date: _____

SEE ATTACHED DRAWING



025-0000-0185-00 G

Parts List

Upper Assembly 6" DHT

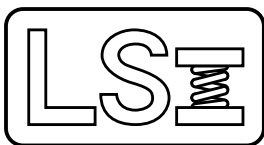
| Rev | By | Date | Description |
|-----|-----|------------|--|
| E | SMH | 09-10-2001 | REMOVED OLD SCALE REPLACED WITH NEW ENCODER, ASSEMBLY DONE IN SOLIDWORKS |
| F | SMH | 12-11-2001 | CHANGE SCALE OVER TO 025-0000-484, ADDED OTHER ITEMS REQUIRED FOR 025-0000-484 |
| G | DAL | 11-03-2012 | Renumbered Balloons, #30 was 013-0000-0098-00 is 013-0000-0065-00, #24 013-0000-0196-00 was 3 ea is 4 ea, #22 013-0000-0192-00 was 3 ea is 2 ea, #36 025-1000-0352-01 was 025-0000-0352-00 |
| | SMH | 09-10-2001 | |

| Item | Qty | Part Number | Rev | Part Name | PCB Location | Part Length |
|------|-----|------------------|-----|--------------------------------|--------------|-------------|
| 31 | 3 | 018-0000-1042-00 | A | Locking Clamp #1 (Hand Tester) | | in. |
| 32 | 3 | 018-0000-1043-00 | B | Locking Clamp #2 (Hand Tester) | | in. |
| 33 | 1 | 018-0000-0872-02 | M | Rack Housing, Hand Tester | | in. |
| 34 | 1 | 013-3000-0023-00 | | Cable Clamp, 3/16" Dia. | | in. |
| 35 | 1 | 013-0000-0052-00 | | 10-32 X 3/8 BHSCS | | in. |
| 36 | 1 | 025-1000-0352-01 | B | Encoder Cable Standard DHT | | in. |
| 37 | 1 | 018-0000-1023-00 | B | Sliding Stop Block | | in. |
| 38 | 2 | 018-0000-1062-00 | A | Top Support Clamp | | in. |
| 39 | 1 | 018-0000-1022-00 | G | TOP STOP SUPPORT/DHT | | in. |

Approved by: _____

Date: _____

SEE ATTACHED DRAWING



Larson Systems Inc.
10073 Baltimore Street NE
Minneapolis, MN 55449-4425
www.larsonsystems.com

763-780-2131
1-877-780-2131
Fax: 763-780-2182
info@larsonsystems.com

